

The following images are of 4 consecutive frames from an NSFCAM movie with AO “Off” and AO “On”. The data was taken on May 24, 2002 during AO’s 1st engineering run.

The top row shows movie images #5-8. The AO system was turned on during these frames. The bottom row shows movie image #1005-1008. The AO system was turned off during these frames.

4 sets of image are presented. They show the same data, but use different scaling and colormap to highlight the images.

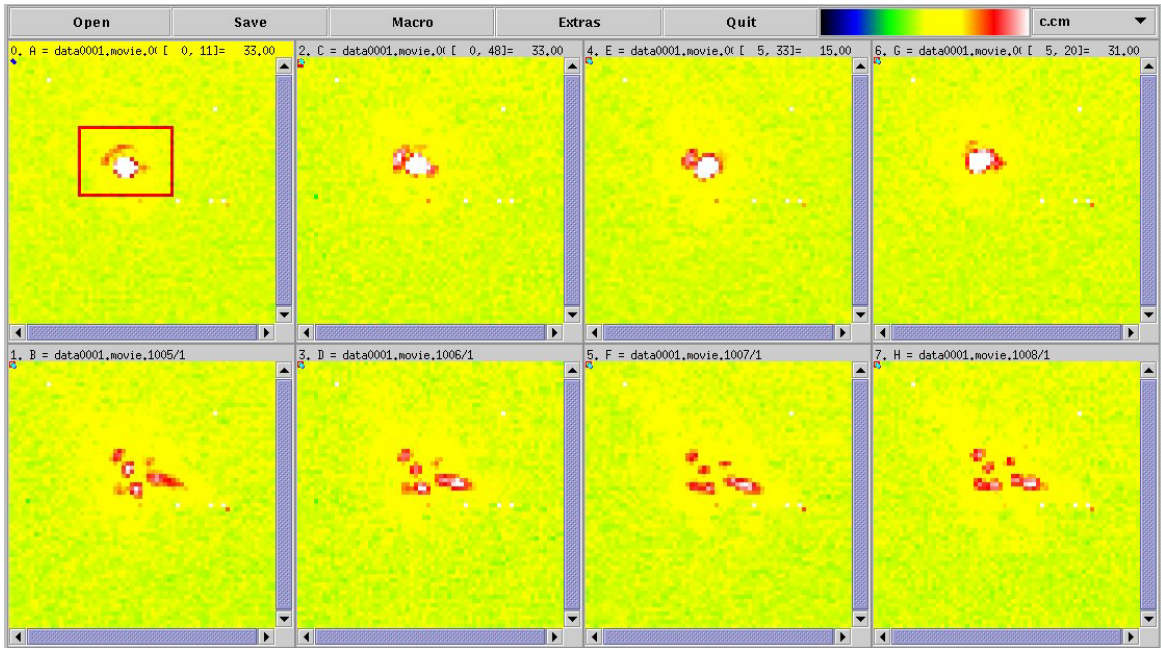


Image 1 -each frame is autoscaled and shown using Dv’s c.cm colormap

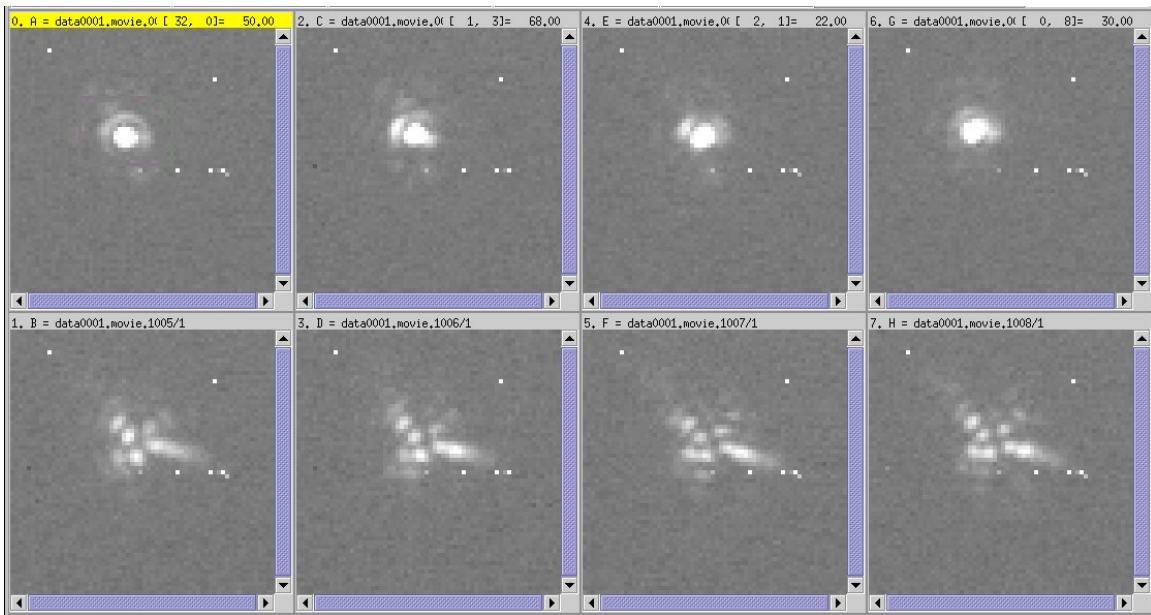


Image 2 - each frame is autoscaled and shown in Dv’s gray.cm colormap.

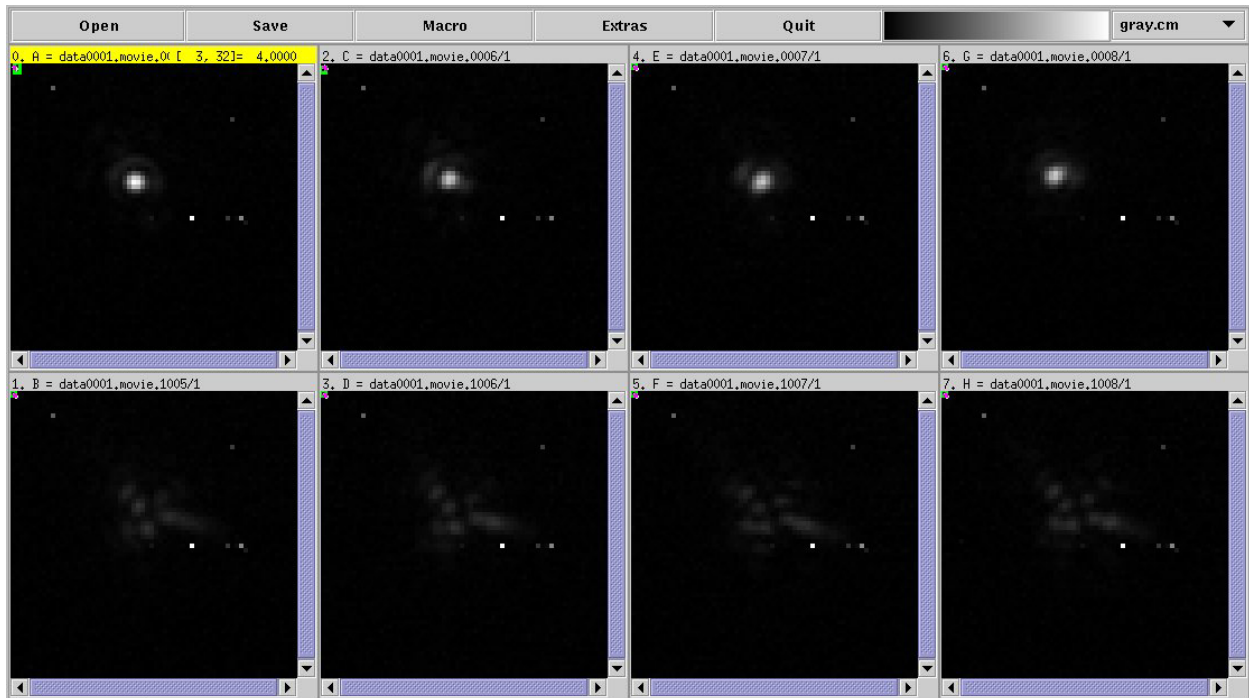


Image 3 - each frame is scale from 0 to 2300 counts. The maximum peak pixel is from image 1 and the value is 2273. Dv's gray.cm colormap is used..

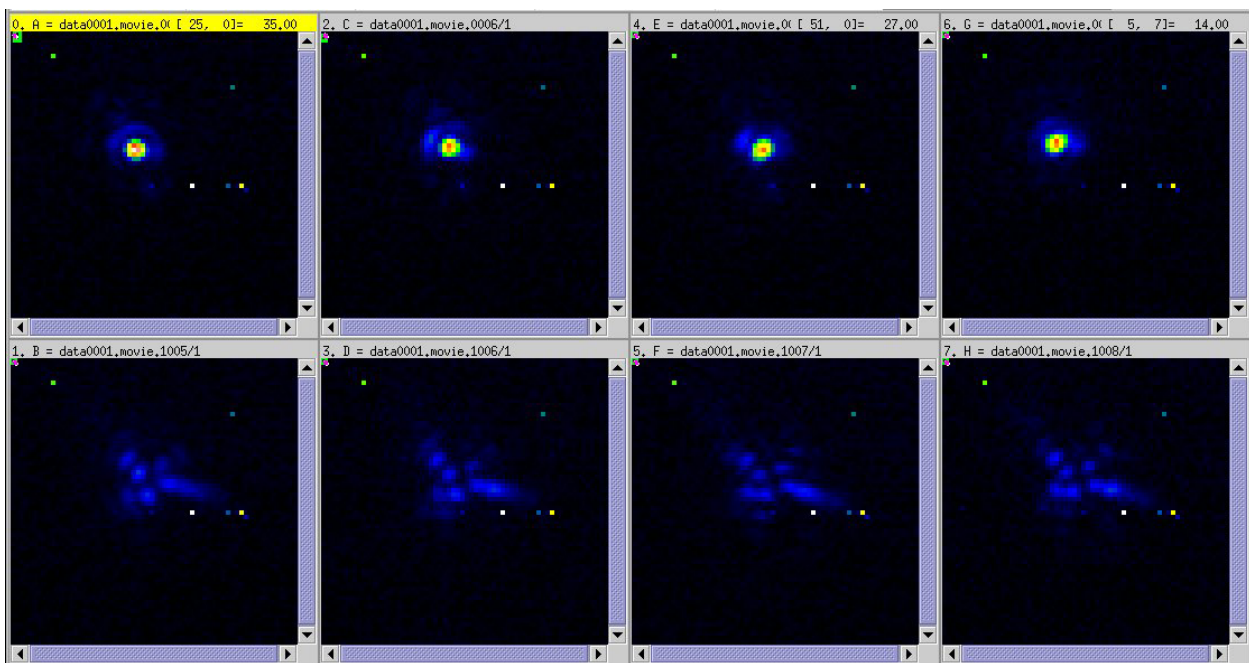


Image 4 - each frame is scale from 0 to 2300 counts. The maximum peak pixel is from image 1 and the value is 2273. Dv's c.cm colormap is used.

NSFCAM's movieburst mode was used to take this movie data set. Each frame is a 64x64 pixel subarray. Integration time was 0.05. Coadd=1. The filter used was the CVF at 2.20. The plate scale is 0.06 arcseconds/pixel.

The object is SAO 105298.