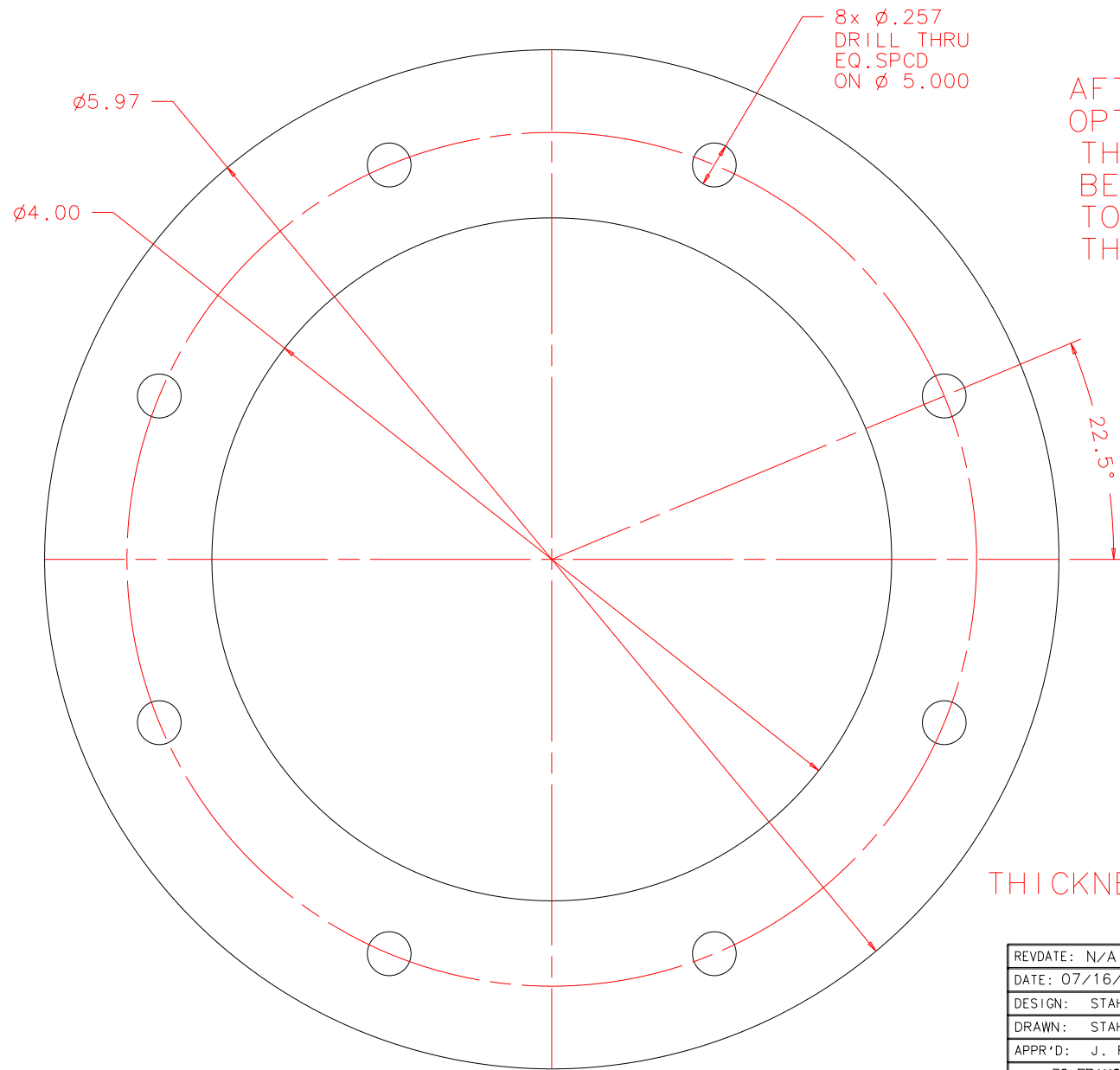


NOTES: UNLESS OTHERWISE NOTED

1. MACHINED SURFACE ROUGHNESS 64
O-RING GROOVES AND SURFACES 32
2. REMOVE ALL BURRS/SHARP CORNERS

BILL OF MATERIAL				
NO.	REQ'D	REF DRW	DESCRIPTION	MATERIAL
N/A	1	SD2-016A	STRAP 1 ASSEMBLY SPACER	COPPER OFHC



AFTER DETERMINING OPTIMAL THICKNESS THIS PART SHOULD BE SOFT SOLDERED TO SD2-011A WITH THE HOLE PATTERN LINED UP.

THICKNESS .38

PLOT: 10/19/99

SD0-001B
NEXT ASSY

REVDATE: N/A	REVISION: N/A
DATE: 07/16/98	INSTITUTE FOR ASTRONOMY
DESIGN: STAHLBERGER	2680 WOODLAWN DR. HONOLULU, HI 96822
DRAWN: STAHLBERGER	INSTRUMENT: SPEX - CROSS DISPERSED SPECTROGRAPH
APPR'D: J. RAYNER	PART NAME: STRAP 1 ASSEMBLY SPACER
TOLERANCES	
X.X	+/- .015
X.XX	+/- .005
X.XXX	+/- .002
ANGLE	+/- 30 min
FRACTION	+/- 1/32
DRW NO: SD2-016A	SCALE: 1:1
SIZE: A	JOS NO: 725
SHEET: 1 OF 1	