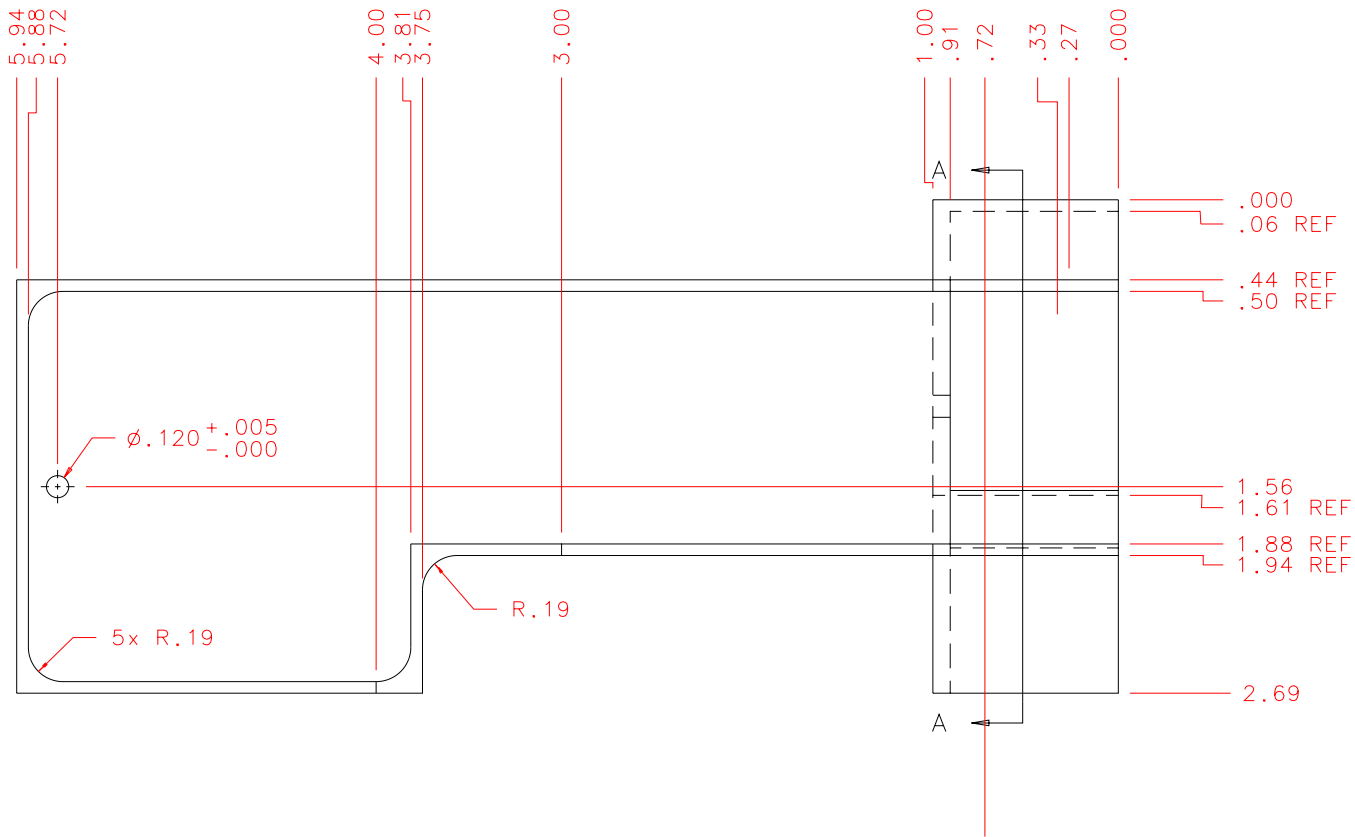


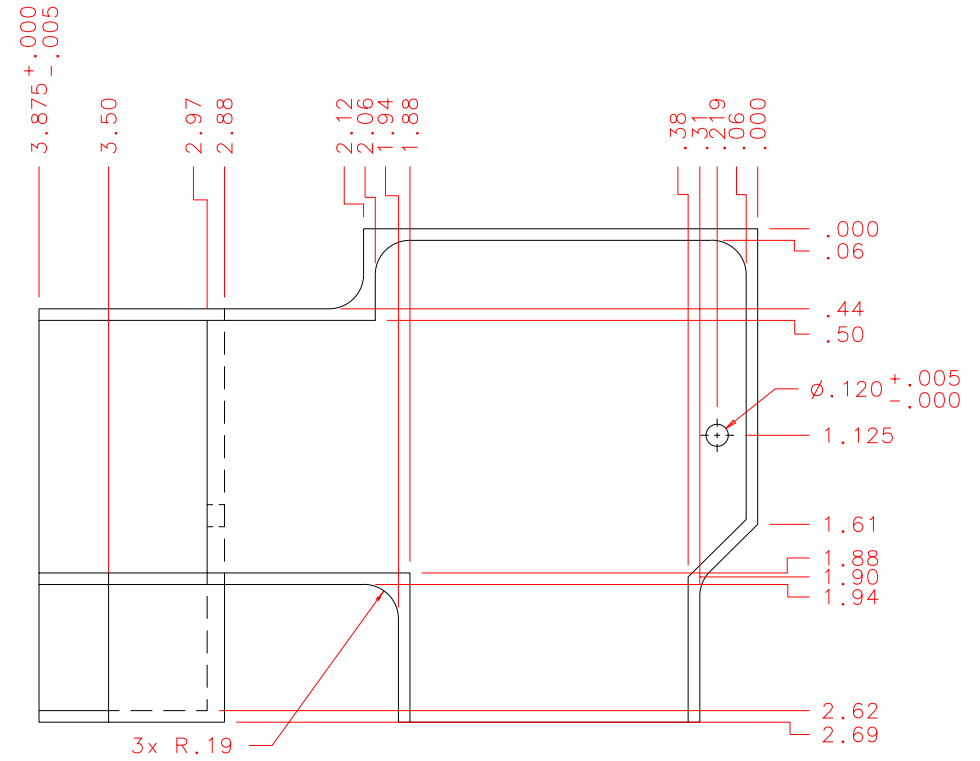
NOTES: UNLESS OTHERWISE NOTED
 1. MACHINED SURFACE ROUGHNESS 64
 O-RING GROOVES AND SURFACES 32
 2. REMOVE ALL BURRS/SHARP CORNERS

POLISH ENTIRE
 PART TO
 10 MICRON FINISH

BILL OF MATERIAL				
NO.	REQ'D	REF DRW	DESCRIPTION	MATERIAL
N/A	1	SD4-014B	DUAL LIGHT SHIELD	ALU 6061-T6



LEFT: SCALE 1:1



FRONT: SCALE 1:1

PLOT: 10/19/99

SD4-001B	NEXT ASSY
----------	-----------

REVDATE: 10/05/99	REVISION: ADJUSTED W/ASSEMBLY
DATE: 04/08/99	REVISION: N/A
DESIGN: STAHLBERGER	INSTITUTE FOR ASTRONOMY
DRAWN: STAHLBERGER	2680 WOODLAWN DR. HONOLULU, HI 96822
APPR'D: J. RAYNER	INSTRUMENT: SPEX - CROSS DISPERSED SPECTROGRAPH
TOLERANCES	PART NAME: DUAL LIGHT SHIELD
X.X +/- .015	TELESCOPE: IRTF
X.XX +/- .005	
X.XXX +/- .002	
ANGLE +/- 30 min	
FRACTION +/- 1/32	
DRW NO: SD4-014B	SCALE: NOTED
SIZE: B	JOS NO: 725
	SHEET: 1 OF 3