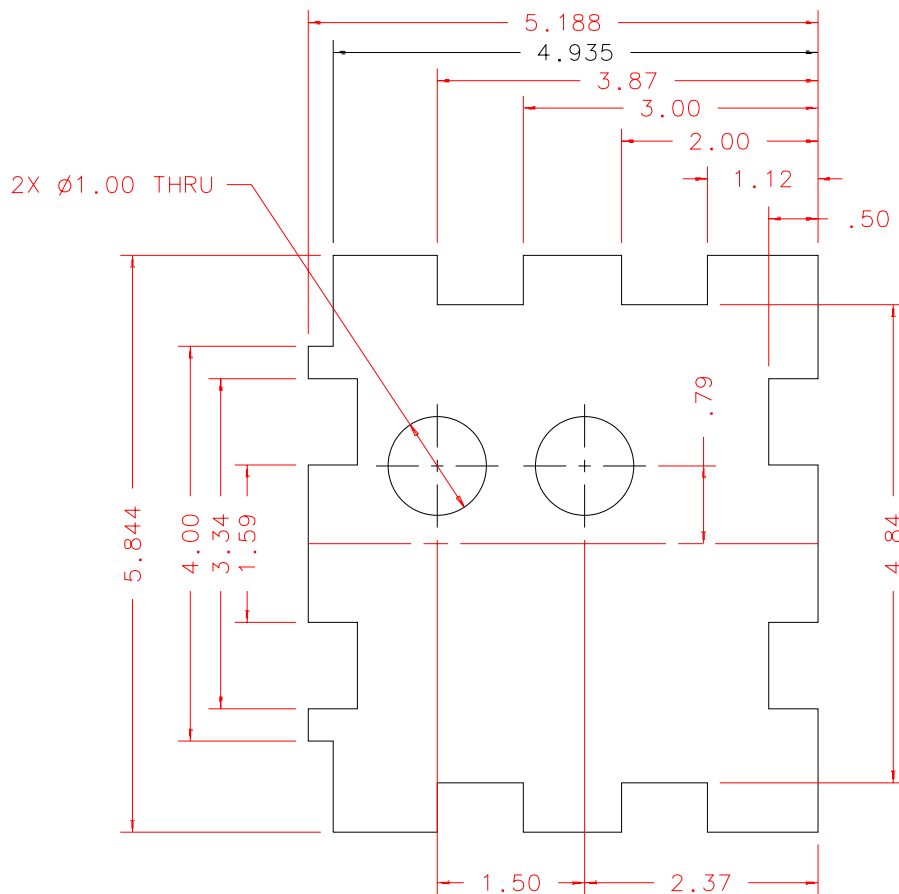


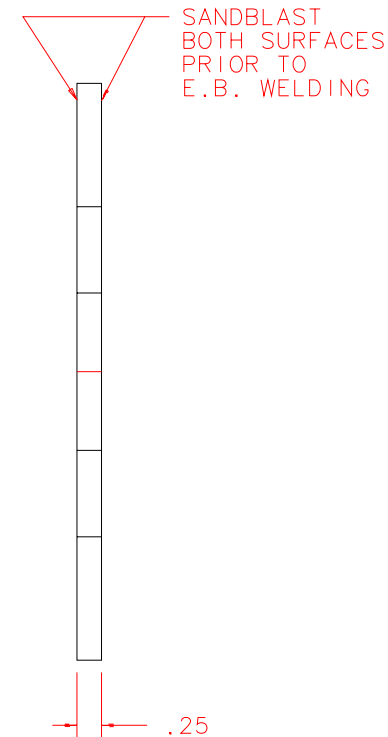
NOTES: UNLESS OTHERWISE NOTED

1. MACHINED SURFACE ROUGHNESS 64
O-RING GROOVES AND SURFACES 32
2. REMOVE ALL BURRS/SHARP CORNERS

BILL OF MATERIAL				
NO.	REQ'D	REF DRW	DESCRIPTION	MATERIAL
N/A	2	SLO-015A	INTERNAL RIB	ALU 2219



FRONT



RIGHT

REVDATE: 02/05/98	REVISION: DIM 4.935 WAS 5.00
REVDATE: N/A	REVISION: N/A
DATE: 03/25/97	INSTITUTE FOR ASTRONOMY 2680 WOODLAWN DR. HONOLULU, HI 96822
DESIGN: STAHLBERGER	
DRAWN: STAHLBERGER	INSTRUMENT: SPEX - CROSS DISPERSED SPECTROGRAPH
APPR'D: J. RAYNER	PART NAME: INTERNAL RIB
TOLERANCES	
X.X	+/- .015
X.XX	+/- .005
X.XXX	+/- .002
ANGLE	+/- 30 min
FRACTION	+/- 1/32
TELESCOPE: IRTF	
DRW NO: SLO-015A	SCALE: 1:2
SIZE: A	JOS NO: 725
SHEET: 1 OF 1	

PLOT:10/19/99

SLO-001B
NEXT ASSY