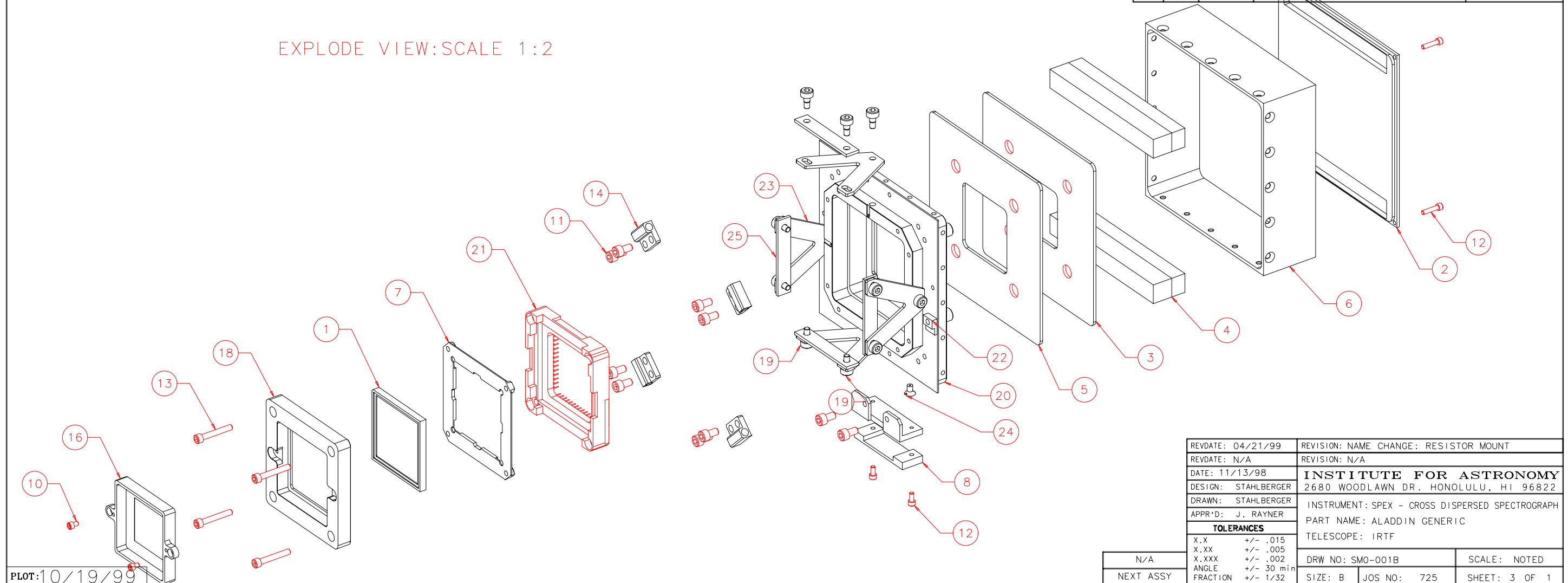


NOTES: UNLESS OTHERWISE NOTED
 1. MACHINED SURFACE ROUGHNESS 64
 O-RING GROOVES AND SURFACES 32
 2. REMOVE ALL BURRS/SHARP CORNERS

NOTES:
 A) EPOXY 20 TO 21 AT ASSY
 B) FOCAL PLANE MASK, ITEM 16 TO BE CUSTOM CUT FOR INDIVIDUAL ARRAY
 C) USE VENTED SCREWS FOR NONPENETRATING TREADED HOLES
 D) ITEM 24 ONE SHOWN ONLY

| BILL OF MATERIAL | | | | |
|------------------|-------|----------|----------------------------------|----------------|
| NO. | REQ'D | REF DRW | DESCRIPTION | MATERIAL |
| N/A | 1 | SMO-001B | ALADDIN GENERIC | N/A |
| 1 | 1 | N/A | ALADDIN ARRAY | INSB |
| 2 | 1 | SMO-013A | COVER PLATE | ALU 6061-T6 |
| 3 | 1 | SMO-014A | DAUGHTER BOARD | G-10 |
| 4 | 2 | N/A | ELECTRIC CONNECTOR | MOLDED PLASTIC |
| 5 | 1 | SMO-015A | FANOUT BOARD | G-10 |
| 6 | 1 | SMO-016B | FARADAY SHIELD | ALU 6061-T6 |
| 7 | 1 | SMO-017A | FOWLER SPACER | G-10CR |
| 8 | 1 | SMO-040A | RIBBON CABLE CLAMP | ALU 6061-T6 |
| 9 | 1 | SMO-041A | RIBBON CABLE MOUNT | ALU 6061-T6 |
| 10 | 2 | N/A | HEX SOCKET HEAD 2-56 X 1/8 | STAINLESS |
| 11 | 10 | N/A | HEX SOCKET HEAD 6-32 X 1/4 | STAINLESS |
| 12 | 6 | N/A | HEX SOCKET HEAD 2-56 X 3/8 | STAINLESS |
| 13 | 4 | N/A | HEAD SOCKET HEAD 4-40 X 3/4 | STAINLESS |
| 14 | 4 | SMO-020A | RESISTOR MOUNT | COPPER OFHC |
| 15 | 1 | SMO-034A | FOCAL PLANE BLANKOFF | ALU 6061-T6 |
| 16 | 1 | SMO-035A | FOCAL PLANE MASK | ALU 6061-T6 |
| 17 | 1 | SMO-039A | MAZE COVER PLATE | ALU 6061-T6 |
| 18 | 1 | SMO-036A | PRESSURE PLATE | ALU 6061-T6 |
| 19 | 12 | N/A | SHOULDER SCREW PZ-1-3(BERG) | STAINLESS |
| 20 | 1 | SMO-037B | YAMAICHI SOCKET HOUSING | ALU 6061-T6 |
| 21 | 1 | SMO-038A | YAMAICHI SOCKET MOD | MOLDED PLASTIC |
| 22 | 1 | N/A | TEMP SENSOR DT-471-BR(LAKESHORE) | CERAMIC |
| 23 | 4 | SMO-029A | V-TRUSS | G-10CR |
| 24 | 20 | N/A | VENT SOCK FLAT HEAD FA-403(U-C) | STAINLESS |
| 25 | 4 | SMO-030A | HEX SHIM NOMINAL | ALU 6061-T6 |
| 26 | 2 | N/A | HEX SOCKET HEAD 4-40 x 1/4 | STAINLESS |
| 27 | 2 | N/A | HEX SOCKET HEAD 2-56 x 3/16 | STAINLESS |

EXPLODE VIEW: SCALE 1:2



PLOT: 10/19/99

| | |
|---------------------|---|
| REVDATE: 04/21/99 | REVISION: NAME CHANGE: RESISTOR MOUNT |
| REVDATE: N/A | REVISION: N/A |
| DATE: 11/13/98 | INSTITUTE FOR ASTRONOMY |
| DESIGN: STAHLBERGER | 2680 WOODLAWN DR. HONOLULU, HI 96822 |
| DRAWN: STAHLBERGER | INSTRUMENT: SPEX - CROSS DISPERSED SPECTROGRAPH |
| APPR'D: J. RAYNER | PART NAME: ALADDIN GENERIC |
| TOLERANCES | TELESCOPE: IRTF |
| X.X +/- .015 | |
| X.XX +/- .005 | |
| X.XXX +/- .002 | |
| ANGLE +/- 30 min | |
| FRACTION +/- 1/32 | |
| N/A | DRW NO: SMO-001B |
| NEXT ASSY | SCALE: NOTED |
| | SIZE: B |
| | JOS NO: 725 |
| | SHEET: 3 OF 1 |