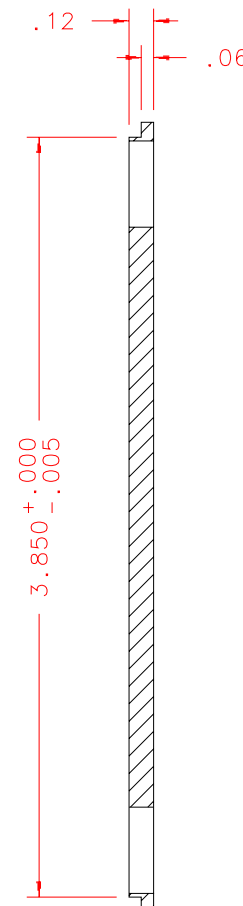
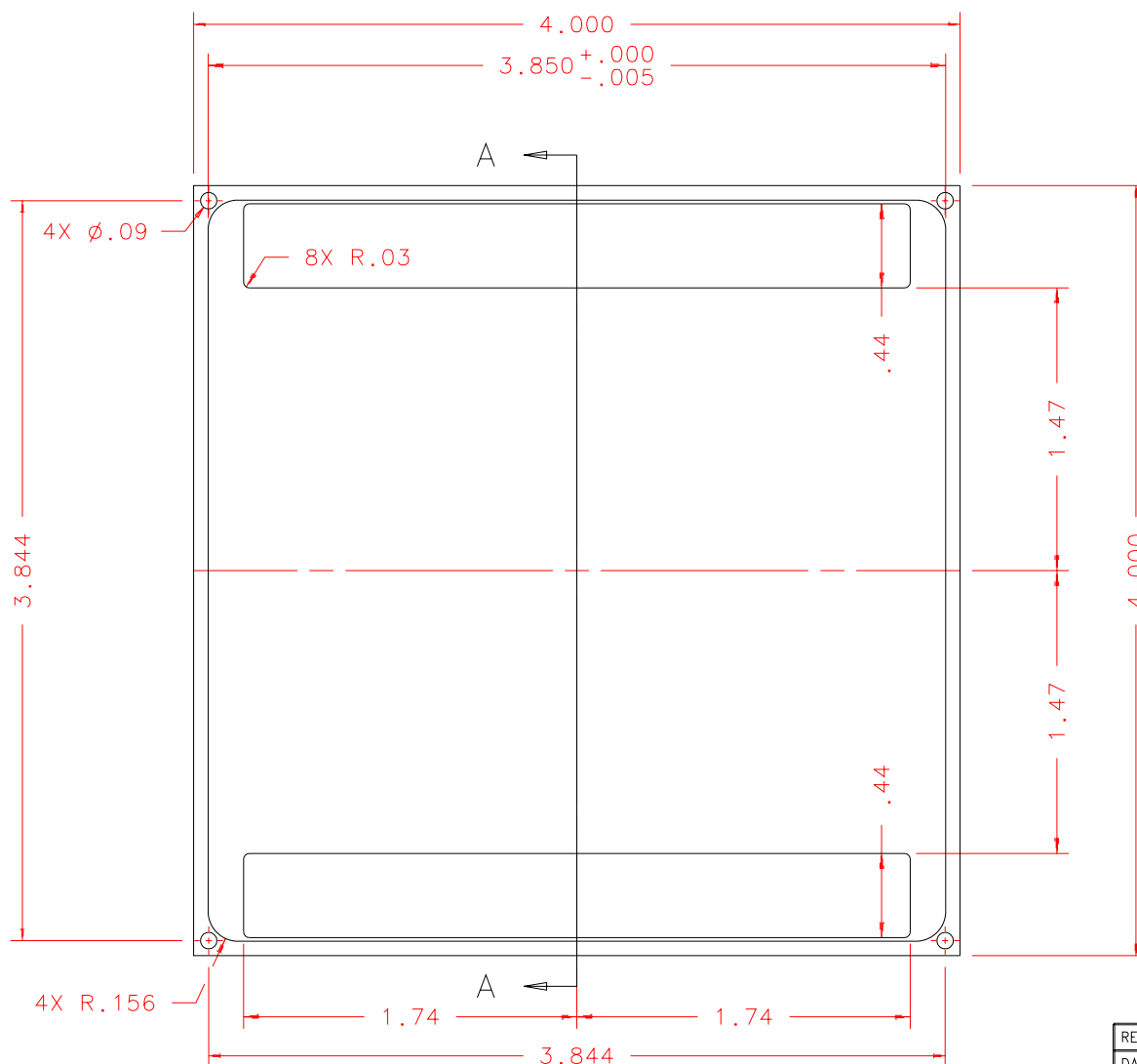


NOTES: UNLESS OTHERWISE NOTED

1. MACHINED SURFACE ROUGHNESS 64  
O-RING GROOVES AND SURFACES 32
2. REMOVE ALL BURRS/SHARP CORNERS

| BILL OF MATERIAL |       |          |             |             |
|------------------|-------|----------|-------------|-------------|
| NO.              | REQ'D | REF DRW  | DESCRIPTION | MATERIAL    |
| N/A              | 1     | SMO-013A | COVER PLATE | ALU 6061-T6 |



SECTION A-A

FRONT

|                     |  |
|---------------------|--|
| REVDATE: N/A        | REVISION: N/A  |
| DATE: 11/06/97      | <b>INSTITUTE FOR ASTRONOMY</b><br>2680 WOODLAWN DR. HONOLULU, HI 96822 |
| DESIGN: STAHLBERGER |  |
| DRAWN: STAHLBERGER  | INSTRUMENT: SPEX - CROSS DISPERSED SPECTROGRAPH                        |
| APPR'D: J. RAYNER   | PART NAME: COVER PLATE   |
| <b>TOLERANCES</b>   |  |
| X.X                 | +/- .015   |
| X.XX                | +/- .005   |
| X.XXX               | +/- .002   |
| ANGLE               | +/- 30 min   |
| FRACTION            | +/- 1/32   |
| DRW NO: SMO-013A    | SCALE: 1:1   |
| SIZE: A             | JOS NO: 725  |
| SHEET: 1 OF 1       |  |

PLOT: 10/19/99

SMO-001B  
NEXT ASSY