

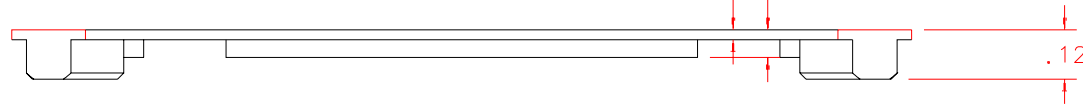
NOTES: UNLESS OTHERWISE NOTED

1. MACHINED SURFACE ROUGHNESS 64
O-RING GROOVES AND SURFACES 32
2. REMOVE ALL BURRS/SHARP CORNERS

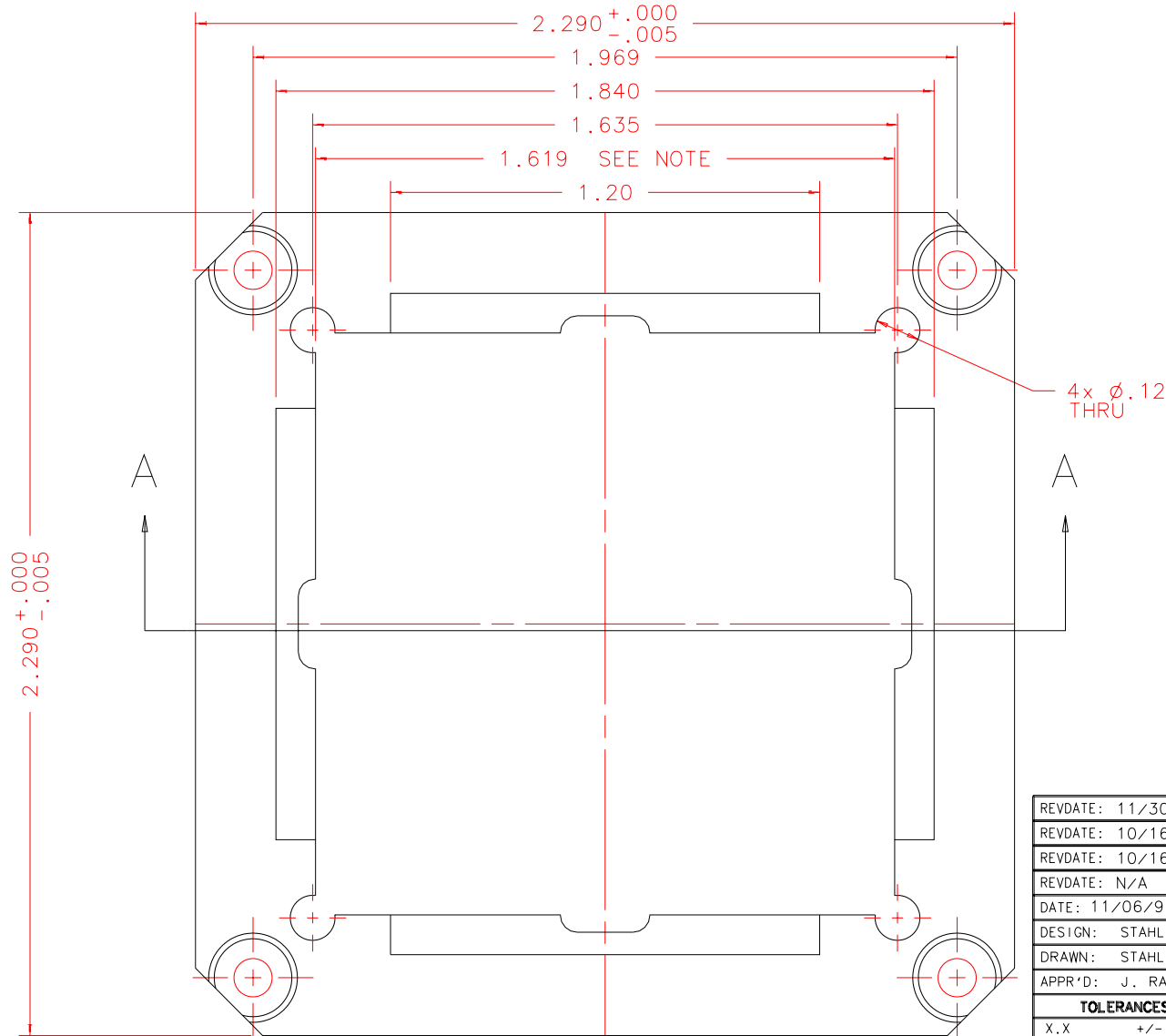
TOP: SCALE 2:1

BILL OF MATERIAL				
NO.	REQ'D	REF DRW	DESCRIPTION	MATERIAL
N/A	8	SM0-017A	FOWLER SPACER	G-10 CR

TOP



NOTE:
EACH SPACER WILL
BE FITTED INDI-
VIDUALLY TO ITS
ARRAY
THE DIMENSION 1.619
IS UNDERSIZED TO
ACCOMODATE TOLERANCE
OF CHIP CARRIER



FRONT: SCALE 2:1 (SYMETRIC X&Y)

REVDATE: 11/30/98	REVISION: ADD 4x 6-32 HOLES
REVDATE: 10/16/98	REVISION: CHANGE INSIDE DIMENSIONS(SEE NOTE)
REVDATE: 10/16/98	REVISION: CHANGE MAT G-10 TO G-10CR
REVDATE: N/A	REVISION: N/A
DATE: 11/06/97	INSTITUTE FOR ASTRONOMY
DESIGN: STAHLBERGER	2680 WOODLAWN DR. HONOLULU, HI 96822
DRAWN: STAHLBERGER	INSTRUMENT: SPEX - CROSS DISPERSED SPECTROGRAPH
APPR'D: J. RAYNER	PART NAME: FOWLER SPACER
TOLERANCES	
X.X	+/- .015
X.XX	+/- .005
X.XXX	+/- .002
ANGLE	+/- 30 min
FRACTION	+/- 1/32
TELESCOPE: IRTF	
DRW NO: SM0-017A	SCALE: NOTED
SIZE: A	JOS NO: 725
	SHEET: 1 OF 3

PLOT: 10/19/99

SM0-001B
NEXT ASSY