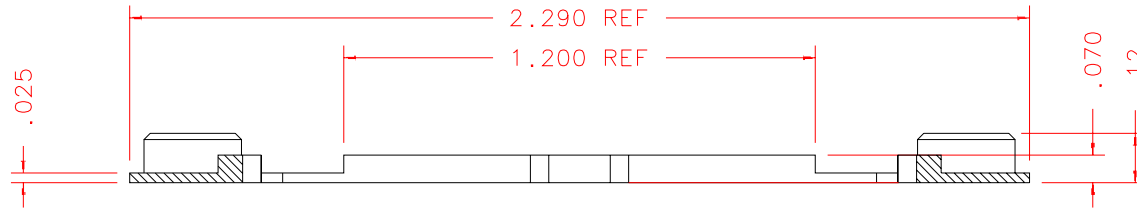


NOTES: UNLESS OTHERWISE NOTED

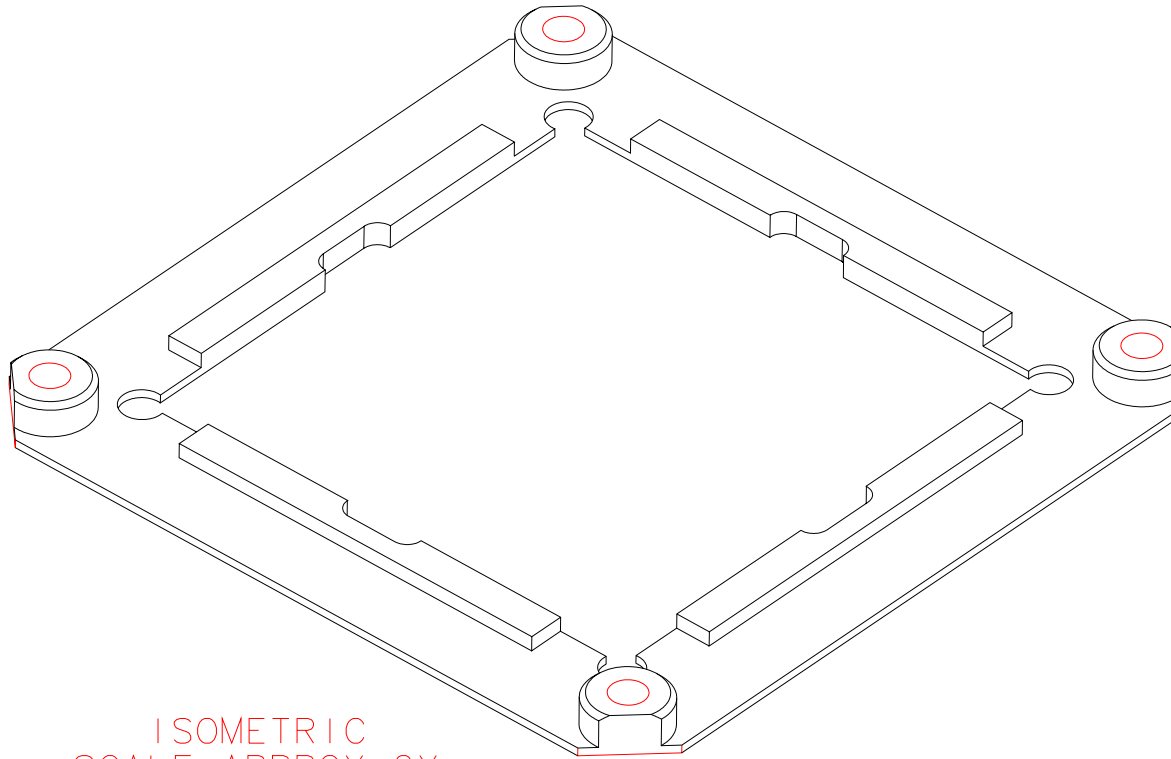
1. MACHINED SURFACE ROUGHNESS 64  
O-RING GROOVES AND SURFACES 32
2. REMOVE ALL BURRS/SHARP CORNERS

BILL OF MATERIAL				
NO.	REQ'D	REF DRW	DESCRIPTION	MATERIAL
N/A	8	SM0-017A	FOWLER SPACER	G-10 CR

NOTE:  
EACH SPACER WILL  
BE FITTED INDI-  
VIDUALLY TO ITS  
ARRAY  
THE DIMENSION 1.619  
IS UNDERSIZED TO  
ACCOMODATE TOLERANCE  
OF CHIP CARRIER



SECTION A-A: SCALE 2:1



ISOMETRIC  
SCALE APPROX 2X

REVDATE: 11/30/98	REVISION: ADD 4x 6-32 HOLES
REVDATE: 10/16/98	REVISION: CHANGE INSIDE DIMENSIONS(SEE NOTE)
REVDATE: 10/16/98	REVISION: CHANGE MAT G-10 TO G-10CR
REVDATE: N/A	REVISION: N/A
DATE: 11/06/97	<b>INSTITUTE FOR ASTRONOMY</b> 2680 WOODLAWN DR. HONOLULU, HI 96822
DESIGN: STAHLBERGER	
DRAWN: STAHLBERGER	INSTRUMENT: SPEX - CROSS DISPERSED SPECTROGRAPH PART NAME: FOWLER SPACER TELESCOPE: IRTF
APPR'D: J. RAYNER	
<b>TOLERANCES</b>	
X.X	+/- .015
X.XX	+/- .005
X.XXX	+/- .002
ANGLE	+/- 30 min
FRACTION	+/- 1/32
DRW NO: SM0-017A	SCALE: NOTED
SIZE: A	JOS NO: 725
SHEET: 3 OF 3	

PLOT: 10/19/99

SM0-001B
NEXT ASSY