

NOTES: UNLESS OTHERWISE NOTED

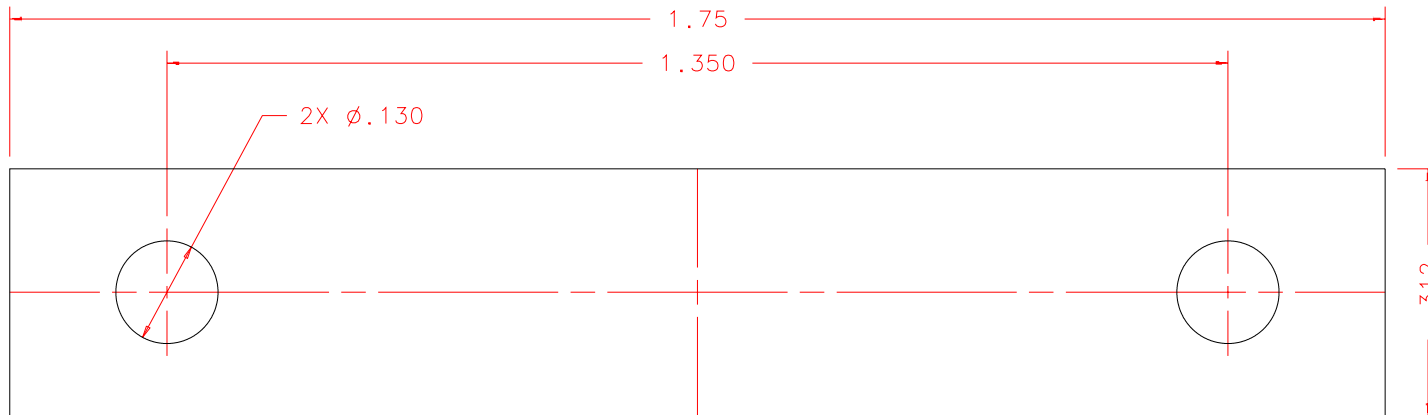
1. MACHINED SURFACE ROUGHNESS 64
O-RING GROOVES AND SURFACES 32
2. REMOVE ALL BURRS/SHARP CORNERS

IF NECESSARY
REPLACE MATERIAL
WITH HARD BRASS
FOR SHIMS UP
TO .020 THICKNESS

BILL OF MATERIAL				
NO.	REQ'D	REF DRW	DESCRIPTION	MATERIAL
N/A	N/A	SM0-030A	X-Y SHIM NOMINAL	ALU 6061-T6

THICKNESSES REQUIRED:

.001	QTY 16
.002	QTY 16
.005	QTY 16
.010	QTY 8
.020	QTY 8
.031	QTY 8
.063	QTY 8



FRONT

REVDATE: N/A	REVISION: N/A
DATE: 11/06/97	INSTITUTE FOR ASTRONOMY 2680 WOODLAWN DR. HONOLULU, HI 96822
DESIGN: STAHLBERGER	
DRAWN: STAHLBERGER	
APPR'D: J. RAYNER	
TOLERANCES	
X.X	+/- .015
X.XX	+/- .005
X.XXX	+/- .002
ANGLE	+/- 30 min
FRACTION	+/- 1/32
INSTRUMENT: SPEX - CROSS DISPERSED SPECTROGRAPH	
PART NAME: X-Y SHIM NOMINAL	
TELESCOPE: IRTF	
DRW NO: SM0-030A	SCALE: 4:1
SIZE: A	JOS NO: 725
SHEET: 1 OF 1	

SM0-001B	NEXT ASSY
----------	-----------

Plot: 10/19/99