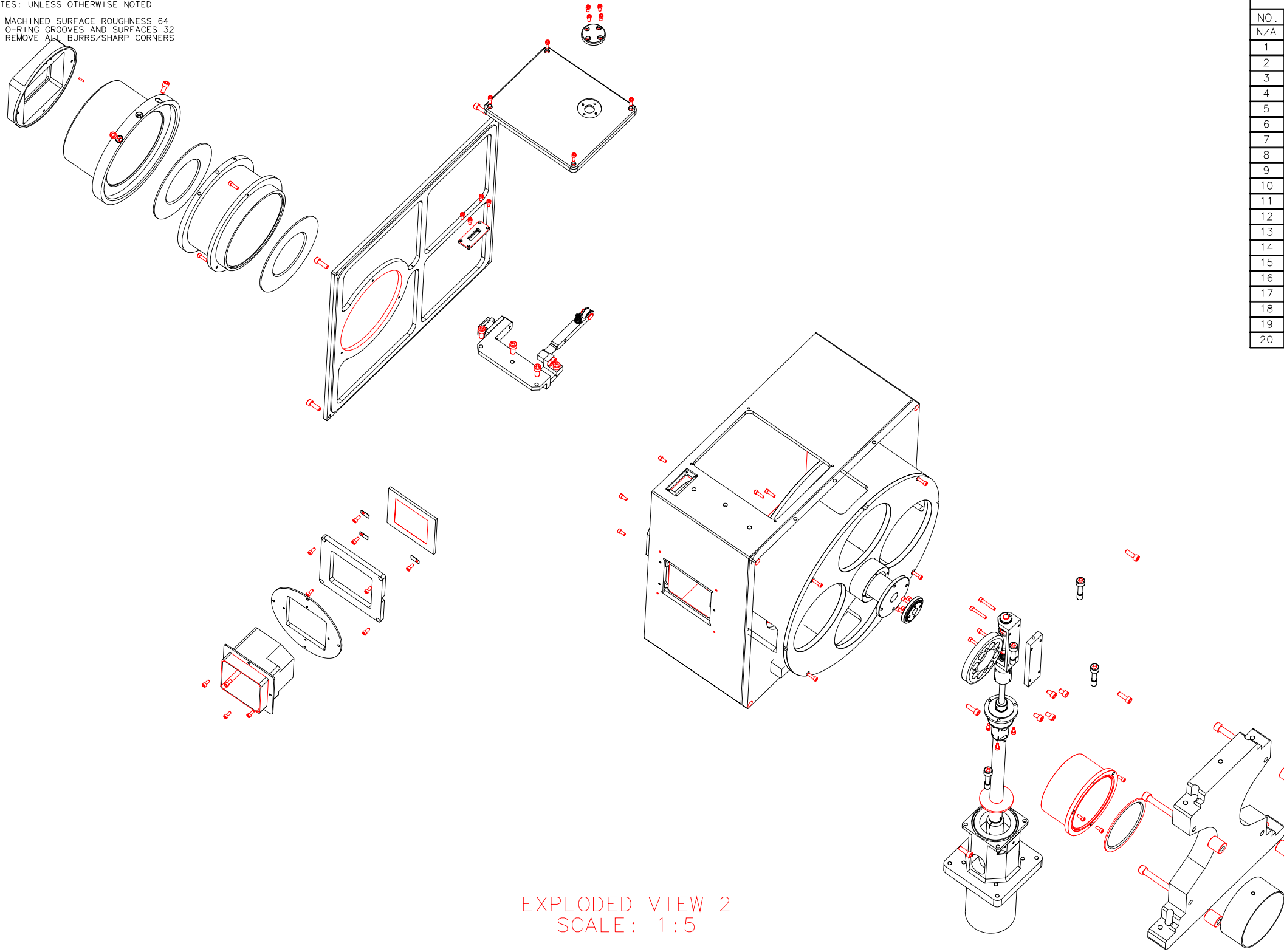


NOTES: UNLESS OTHERWISE NOTED
 1. MACHINED SURFACE ROUGHNESS 64
 O-RING GROOVES AND SURFACES 32
 2. REMOVE ALL BURRS/SHARP CORNERS



EXPLODED VIEW 2
 SCALE: 1:5

BILL OF MATERIAL				
NO.	REQ'D	REF DRW	DESCRIPTION	MATERIAL
N/A	1	SF0-001B	DICHROIC TURRET	N/A
1	1	SF1-001A	BEARING SUPPORT(ASSY)	N/A
2	1	SF2-001A	DETENT(ASSY)	N/A
3	1	SF3-001B	DICHROIC DRIVE TRAIN(ASSY)	N/A
4	1	SP1-001A	COMPLIANT WORM(ASSY)	N/A
5	1	SF4-001A	G-10 DRIVE(ASSY)	N/A
6	1	SP4-001A	LIGHT SHIELD(ASSY)	N/A
7	1	SF5-001A	WARM MOTOR DICHROIC(ASSY)	N/A
8	1	SF6-001A	DICHROIC MOUNT(ASSY)	N/A
9	1	SF7-001B	DRUM(ASSY)	N/A
10	1	SF8-001B	FRAME(ASSY)	N/A
11	2	N/A	HEX SOCKET HEAD 6-32 x 1/2	STAINLESS
12	8	N/A	HEX SOCKET HEAD 8-32 x 1/2	STAINLESS
13	4	N/A	HEX SOCKET HEAD 1/4-20x 1 1/2	STAINLESS
14	2	N/A	HEX SOCKET HEAD 8-32 x 3/8	STAINLESS
15	4	N/A	HEX SOCKET HEAD 10-32 x 1/2	STAINLESS
16	23	N/A	HEX SOCKET HEAD 4-40 x 3/8	STAINLESS
17	29	N/A	HEX SOCKET HEAD 4-40 x 1/4	STAINLESS
18	2	N/A	HEX SOCKET HEAD 8-32 x 3/4	STAINLESS
19	4	N/A	HEX SOCKET HEAD 4-40 x 3/4	STAINLESS
20	4	N/A	HEX SOCKET HEAD 8-32 x 1/4	STAINLESS

NOTES:
 FOR NONPENETRATING
 TAPPED HOLES
 REPLACE SCREWS IN BILL
 OF MATERIAL WITH VENTED
 VERSIONS AS REQUIRED.

EPOXY BAFFLES AT
 FINAL ASSEMBLY, ORIENT
 USING SCRIBE MARKS.
 CONSULT INDIVIDUAL
 ASSEMBLIES FOR DETAILS.

POLISH AS PER DETAIL
 DRAWINGS.

USE VENTED SCREWS
 AS NEEDED

REVDATE: 05/10/99	REVISION: UPDATE DRAWING
REVDATE: N/A	REVISION: N/A
DATE: 12/17/98	INSTITUTE FOR ASTRONOMY
DESIGN: STAHLBERGER	2680 WOODLAWN DR. HONOLULU, HI 96822
DRAWN: STAHLBERGER	INSTRUMENT: SPEX - CROSS DISPERSED SPECTROGRAPH
APPR'D: J. RAYNER	PART NAME: DICHROIC TURRET
TOLERANCES	
X.X	+/- .015
X.XX	+/- .005
X.XXX	+/- .002
ANGLE	+/- 30 min
FRACTION	+/- 1/32

S00-001B	DRW NO: SF0-001B	SCALE: NOTED
NEXT ASSY	SIZE: B	JOS NO: 725
		SHEET: 2 OF 2