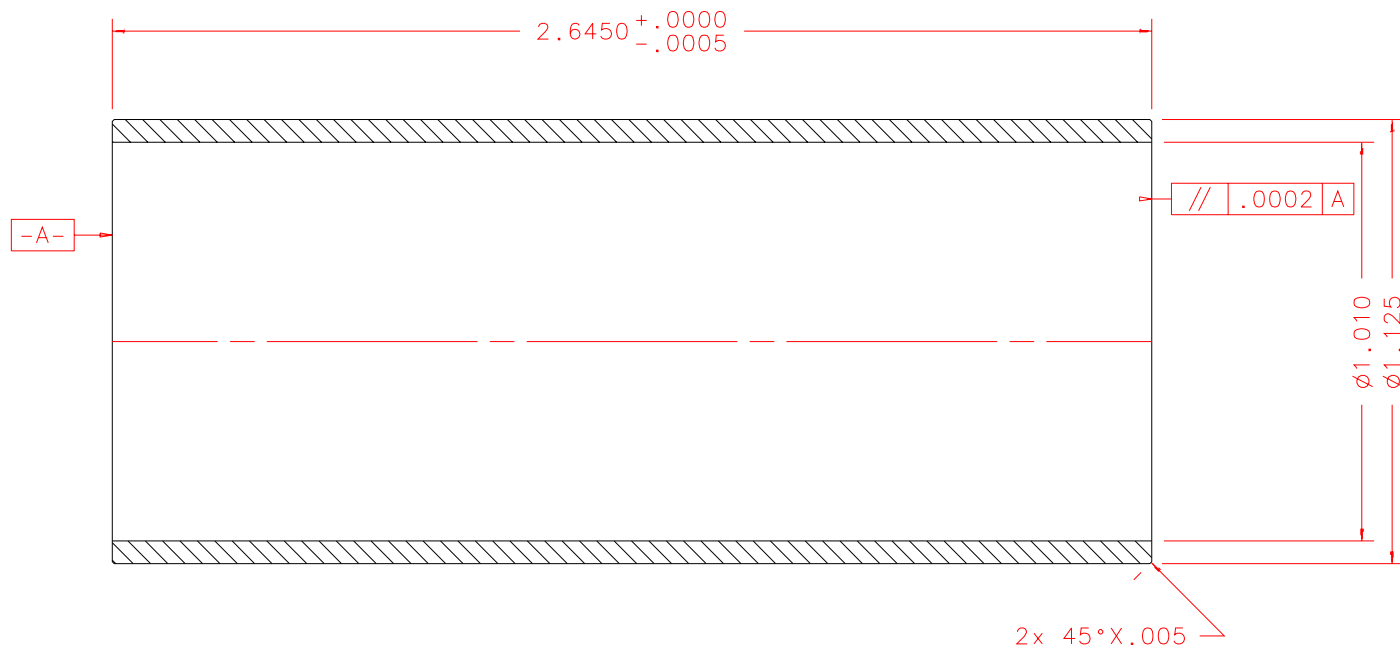
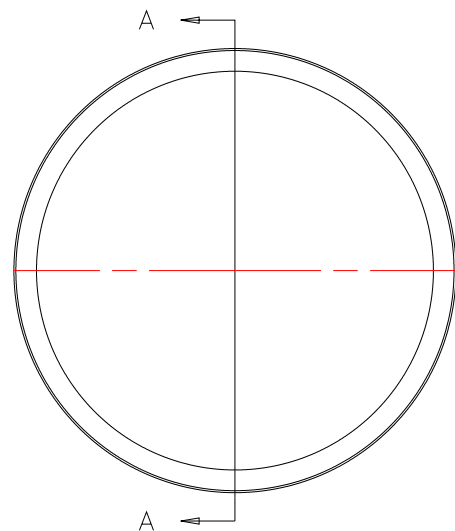


NOTES: UNLESS OTHERWISE NOTED

1. MACHINED SURFACE ROUGHNESS 64
O-RING GROOVES AND SURFACES 32
2. REMOVE ALL BURRS/SHARP CORNERS

BILL OF MATERIAL

NO.	REQ'D	REF DRW	DESCRIPTION	MATERIAL
N/A	1	SF1-013A	BEARING SPACER	ALU 6061-T6



PLOT: 10/19/99

SF1-001A
NEXT ASSY

REVDATE: N/A	REVISION: N/A	
DATE: 01/11/99	INSTITUTE FOR ASTRONOMY 2680 WOODLAWN DR. HONOLULU, HI 96822	
DESIGN: STAHLBERGER		
DRAWN: STAHLBERGER		
APPR'D: J. RAYNER		
TOLERANCES		
X.X +/- .015	INSTRUMENT: SPEX - CROSS DISPERSED SPECTROGRAPH PART NAME: BEARING SPACER TELESCOPE: IRTF	
X.XX +/- .005		
X.XXX +/- .002		
ANGLE +/- 30 min		
FRACTION +/- 1/32		
SIZE: A	JOS NO: 725	SCALE: 2:1
SHEET: 1 OF 1		