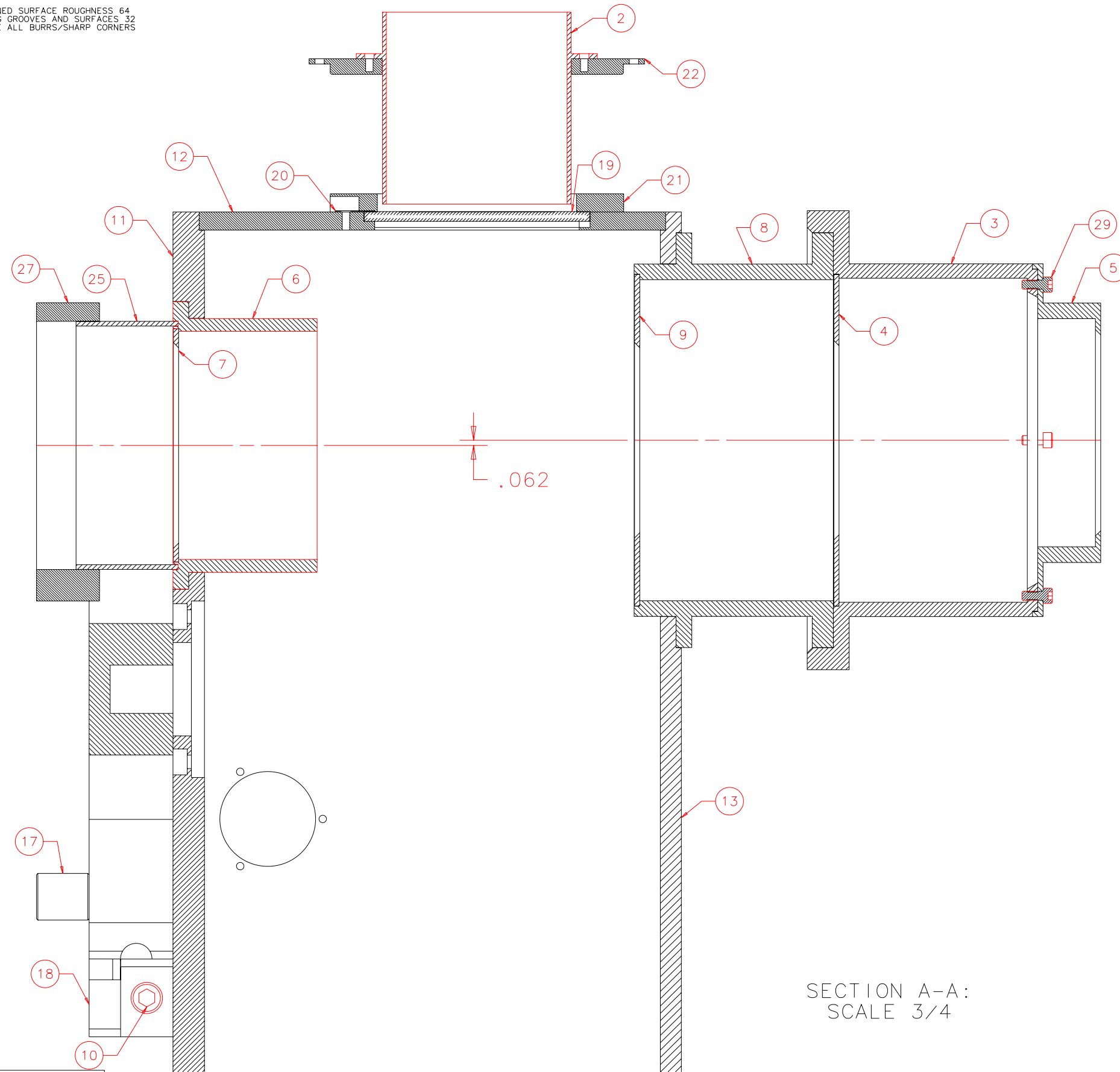
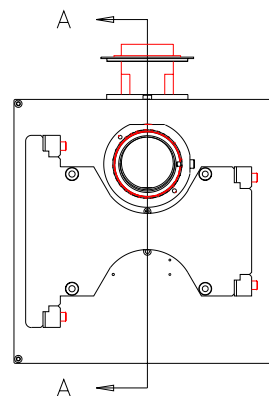


NOTES: UNLESS OTHERWISE NOTED  
 1. MACHINED SURFACE ROUGHNESS 64  
 O-RING GROOVES AND SURFACES 32  
 2. REMOVE ALL BURRS/SHARP CORNERS



SECTION A-A:  
SCALE 3/4



FRONT: SCALE 1/8

BILL OF MATERIAL				
NO.	REQ'D	REF DRW	DESCRIPTION	MATERIAL
N/A	1	SF8-001B	FRAME	N/A
1	1	SF8-011A	ACCESS COVER	ALU 6061-T6
2	1	SF8-012A	BAFFLE TO TIP/TILT	ALU 6061-T6
3	1	SF8-013A	BAFFLE TUBE FEMALE	ALU 6061-T6
4	1	SF8-014A	BAFFLE TUBE FEMALE INSERT	ALU 6061-T6
5	1	SF8-033A	BAFFLE TUBE FEMALE NOZZLE	ALU 6061-T6
6	1	SF8-015A	BAFFLE TUBE FIXED 2	ALU 6061-T6
7	1	SF8-034A	BAFFLE TUBE FIXED 2 INSERT	ALU 6061-T6
8	1	SF8-016A	BAFFLE TUBE MALE	ALU 6061-T6
9	1	SF8-017A	BAFFLE TUBE MALE INSERT	ALU 6061-T6
10	4	SF8-018A	CAPTIVE SCREW	STAINLESS
11	1	SF8-019B	FRAME BASE PLATE	ALU 6061-T6
12	1	SF8-020B	FRAME CENTER	ALU 6061-T6
13	1	SF8-021B	FRAME COVER PLATE	ALU 6061-T6
14	1	SF8-022A	HALL SENSOR BRACKET	ALU 6061-T6
15	1	SJ4-017A	HALL SENSOR CARRIER	ALU 6061-T6
16	1	SF8-023A	HALL&DETENT SUPPORT	ALU 6061-T6
17	4	SF8-024A	NOMINAL SPACER	ALU 6061-T6
18	1	SF8-025B	ONE WAY MOUNT	ALU 6061-T6
19	1	SF8-026A	PK-50 BLOCKER	GLASS
20	3	SF8-027A	PK-50 CL IP	PHOS. BRONZE
21	1	SF8-028A	PK-50 FRAMBaffle	ALU 6061-T6
22	1	SF8-029A	SHIELD PLATE -Y INSERT	ALU 6061-T6
23	1	N/A	SHOULDER SCREW PZ-20-3(BERG)	STAINLESS
24	1	SE0-024A	SINGLE30 MOUNT	ALU 6061-T6
25	1	SF8-030A	SLIDING BRASS TUBE BAFFLE	HARD BRASS
26	1	SF8-031A	SPRING RETAINER	ALU 6061-T6
27	1	SF8-032A	TRUSS MOUNT INTERFACE PLATE	ALU 6061-T6
28	3	N/A	SOCKET HEAD CAP 8-32 x 3/8	STAINLESS
29	4	N/A	SOCKET HEAD CAP 4-40 x 1/4	STAINLESS
30	1	N/A	DOWEL PIN 1/16 x 1/4	STAINLESS

REVDATE: 10/09/99	REVISION: UPDATE MISC. BAFFLES	
REVDATE: N/A	REVISION: N/A	
DATE: 01/05/99	<b>INSTITUTE FOR ASTRONOMY</b>	
DESIGN: STAHLBERGER	2680 WOODLAWN DR. HONOLULU, HI 96822	
DRAWN: STAHLBERGER	INSTRUMENT: SPEX - CROSS DISPERSED SPECTROGRAPH	
APPR'D: J. RAYNER	PART NAME: FRAME	
<b>TOLERANCES</b>	TELESCOPE: IRTF	
X.X +/- .015		
X.XX +/- .005		
X.XXX +/- .002		
ANGLE +/- 30 min		
FRACTION +/- 1/32		
SF0-001B	DRW NO: SF8-001B	SCALE: NOTED
NEXT ASSY	SIZE: B	JOS NO: 725
		SHEET: 2 OF 2

PLOT: 10/19/99