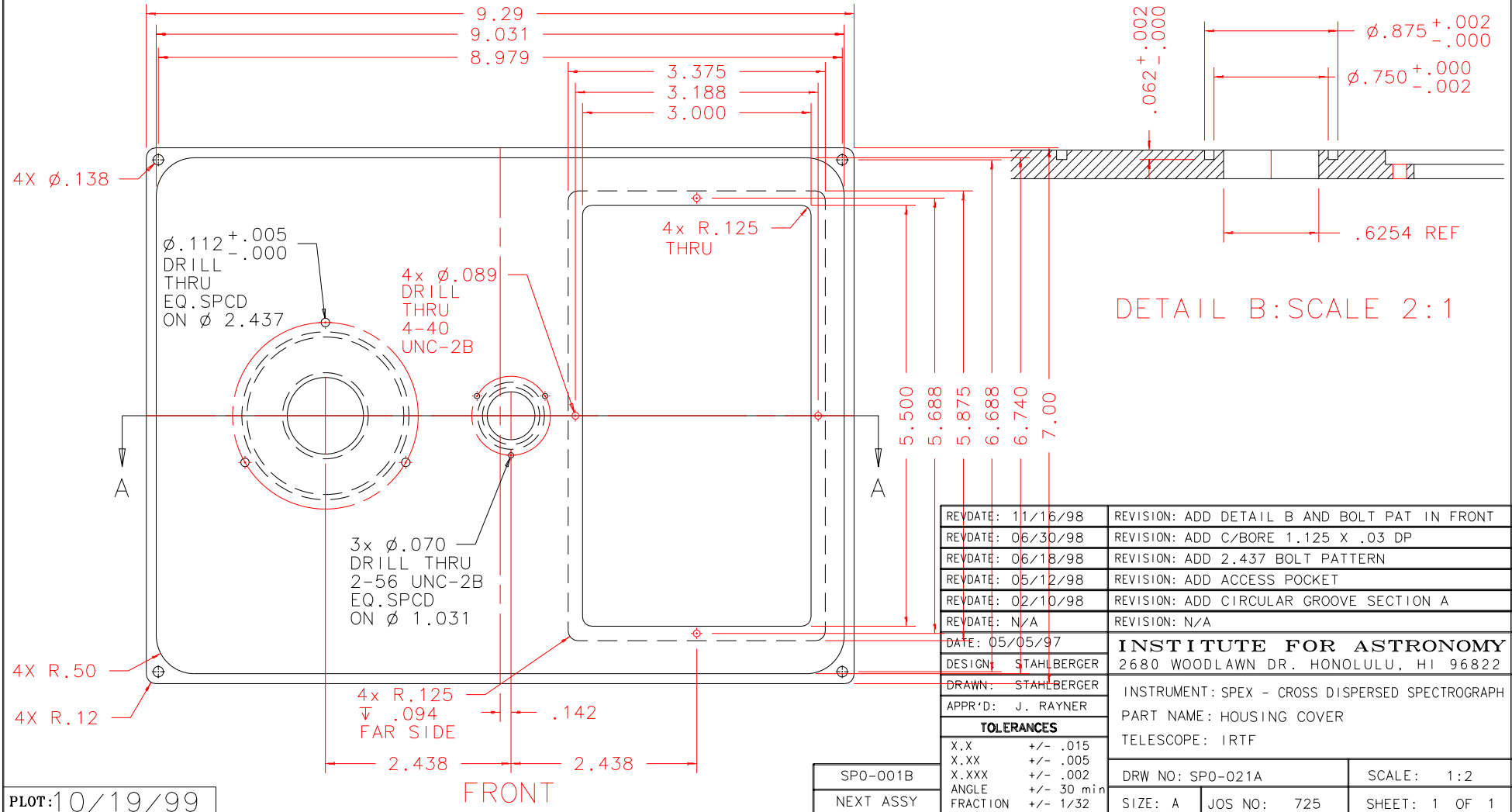
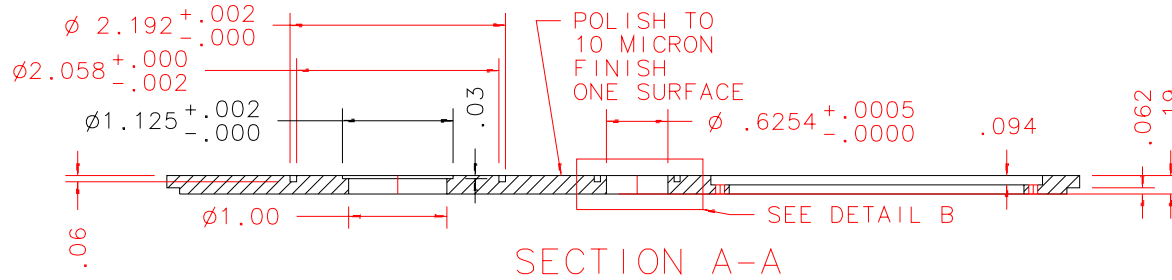


NOTES: UNLESS OTHERWISE NOTED

1. MACHINED SURFACE ROUGHNESS 64
O-RING GROOVES AND SURFACES 32
2. REMOVE ALL BURRS/SHARP CORNERS

| BILL OF MATERIAL | | | | |
|------------------|-------|----------|---------------|-------------|
| NO. | REQ'D | REF DRW | DESCRIPTION | MATERIAL |
| N/A | 1 | SPO-021A | HOUSING COVER | ALU 6061-T6 |



| | |
|---------------------|---|
| REVDATE: 11/16/98 | REVISION: ADD DETAIL B AND BOLT PAT IN FRONT |
| REVDATE: 06/30/98 | REVISION: ADD C/BORE 1.125 X .03 DP |
| REVDATE: 06/18/98 | REVISION: ADD 2.437 BOLT PATTERN |
| REVDATE: 05/12/98 | REVISION: ADD ACCESS POCKET |
| REVDATE: 02/10/98 | REVISION: ADD CIRCULAR GROOVE SECTION A |
| REVDATE: N/A | REVISION: N/A |
| DATE: 05/05/97 | INSTITUTE FOR ASTRONOMY |
| DESIGN: STAHLBERGER | 2680 WOODLAWN DR. HONOLULU, HI 96822 |
| DRAWN: STAHLBERGER | INSTRUMENT: SPEX - CROSS DISPERSED SPECTROGRAPH |
| APPR'D: J. RAYNER | PART NAME: HOUSING COVER |
| TOLERANCES | |
| X.X | +/- .015 |
| X.XX | +/- .005 |
| X.XXX | +/- .002 |
| ANGLE | +/- 30 min |
| FRACTION | +/- 1/32 |
| DRW NO: SPO-021A | SCALE: 1:2 |
| SIZE: A | JOS NO: 725 |
| SHEET: 1 OF 1 | |

PLOT: 10/19/99

SPO-001B
NEXT ASSY