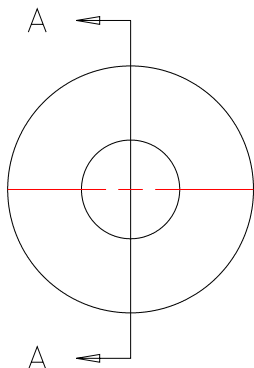


NOTES: UNLESS OTHERWISE NOTED

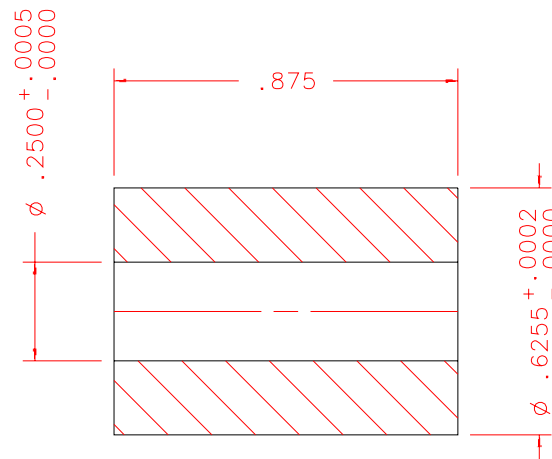
1. MACHINED SURFACE ROUGHNESS 64  
O-RING GROOVES AND SURFACES 32
2. REMOVE ALL BURRS/SHARP CORNERS

BILL OF MATERIAL

| NO. | REQ'D | REF DRW  | DESCRIPTION      | MATERIAL   |
|-----|-------|----------|------------------|------------|
| N/A | 1     | SP0-025A | PRESSFIT BUSHING | HARD BRASS |



FRONT



SECTION A-A

PLOT: 10/19/99

SP0-001B  
NEXT ASSY

|                     |  |
|---------------------|--|
| REVDATE: N/A        | REVISION: N/A  |
| DATE: 05/05/97      | <b>INSTITUTE FOR ASTRONOMY</b><br>2680 WOODLAWN DR. HONOLULU, HI 96822 |
| DESIGN: STAHLBERGER |  |
| DRAWN: STAHLBERGER  | INSTRUMENT: SPEX - CROSS DISPERSED SPECTROGRAPH                        |
| APPR'D: J. RAYNER   | PART NAME: PRESSFIT BUSHING  |
| <b>TOLERANCES</b>   |  |
| X.X +/- .015        | TELESCOPE: IRTF  |
| X.XX +/- .005       |  |
| X.XXX +/- .002      | DRW NO: SP0-025A   |
| ANGLE +/- 30 min    | SCALE: 2:1   |
| FRACTION +/- 1/32   | SIZE: A  |
|                     | JOS NO: 725  |
|                     | SHEET: 1 OF 1  |