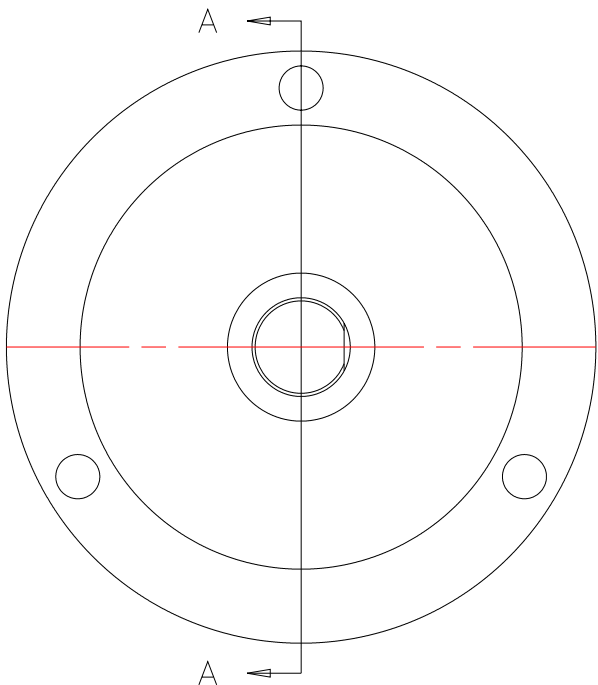


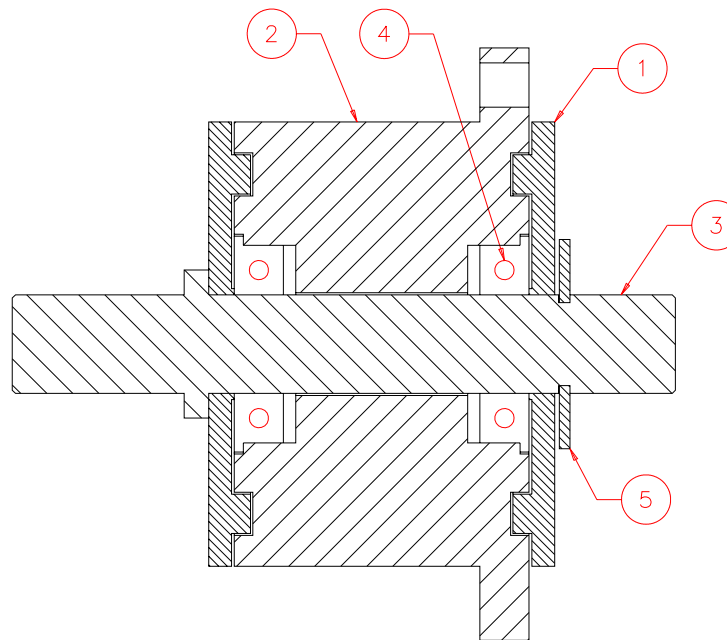
NOTES: UNLESS OTHERWISE NOTED

1. MACHINED SURFACE ROUGHNESS 64  
O-RING GROOVES AND SURFACES 32
2. REMOVE ALL BURRS/SHARP CORNERS



FRONT

| BILL OF MATERIAL |       |          |                          |               |
|------------------|-------|----------|--------------------------|---------------|
| NO.              | REQ'D | REF DRW  | DESCRIPTION              | MATERIAL      |
| N/A              | 1     | SP4-001A | LIGHT SHIELD             | N/A           |
| 1                | 2     | SP4-011A | BAFFLE                   | ALU 6061-T6   |
| 2                | 1     | SP4-012A | HOUSING                  | ALU 6061-T6   |
| 3                | 1     | SP4-013A | SHAFT                    | STAINLESS 303 |
| 4                | 2     | N/A      | BALL BEARING B2-11(BERG) | STAINLESS     |
| 5                | 1     | N/A      | RETAINER Q1-25(BERG)     | STAINLESS     |



SECTION A-A

|   |  |
|---|--|
| REVDATE: N/A                                    | REVISION: N/A  |
| DATE: 05/05/97                                  | <b>INSTITUTE FOR ASTRONOMY</b><br>2680 WOODLAWN DR. HONOLULU, HI 96822 |
| DESIGN: STAHLBERGER                             |  |
| DRAWN: STAHLBERGER                              |  |
| APPR'D: J. RAYNER                               |  |
| <b>TOLERANCES</b>                               |  |
| X.X   | +/- .015   |
| X.XX  | +/- .005   |
| X.XXX   | +/- .002   |
| ANGLE   | +/- 30 min   |
| FRACTION  | +/- 1/32   |
| INSTRUMENT: SPEX - CROSS DISPERSED SPECTROGRAPH |  |
| PART NAME: LIGHT SHIELD                         |  |
| TELESCOPE: IRTF                                 |  |
| DRW NO: SP4-001A                                | SCALE: 2:1   |
| SIZE: A   | JOS NO: 725  |
| SHEET: 1 OF 1                                   |  |

|           |
|-----------|
| SP0-001B  |
| NEXT ASSY |

PLOT:10/19/99