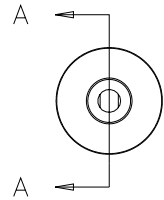


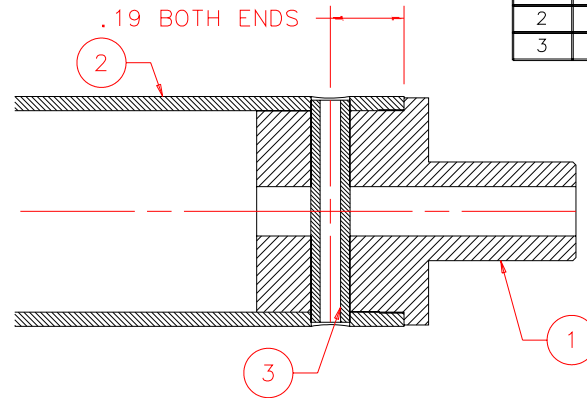
NOTES: UNLESS OTHERWISE NOTED

1. MACHINED SURFACE ROUGHNESS 64
- O-RING GROOVES AND SURFACES 32
2. REMOVE ALL BURRS/SHARP CORNERS

BILL OF MATERIAL				
NO.	REQ'D	REF DRW	DESCRIPTION	MATERIAL
N/A	1	SP6-001A	G-10 DRIVE SHAFT	N/A
1	2	SP0-019A	END TRIM	ALU 6061-T6
2	1	SP0-019A	G-10 TUBE	G-10
3	2	N/A	SPLIT PIN 3/32 X 9/16LG	STAINLESS



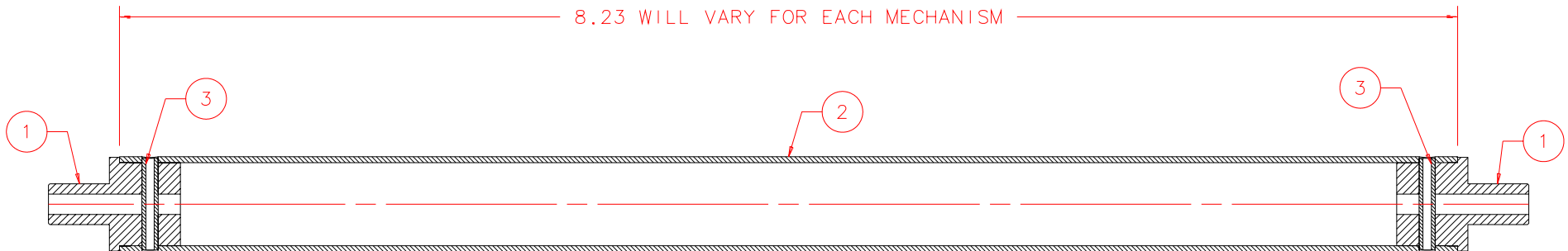
FRONT: SCALE 1:1



DETAIL B: SCALE 2:1

ASSEMBLY PROCEDURE:
IDENTICAL FOR ALL
DRIVE TRAINS EXCEPT
FOR LENGTH OF 2

- A) EPOXY 1 TO 2
- B) CURE 24 HRS
- C) DRILL .098 DIA HOLE
2 PLACES THRU CENTER
- D) INSTALL 3 AS SHOWN



SECTION A-A: SCALE 1:1

REVDATE: N/A	REVISION: N/A	
DATE: 11/13/98	INSTITUTE FOR ASTRONOMY 2680 WOODLAWN DR. HONOLULU, HI 96822	
DESIGN: STAHLBERGER		
DRAWN: STAHLBERGER		
APPR'D: J. RAYNER		
TOLERANCES		
X.X	+/- .015	INSTRUMENT: SPEX - CROSS DISPERSED SPECTROGRAPH
X.XX	+/- .005	
X.XXX	+/- .002	PART NAME: G-10 DRIVE SHAFT
ANGLE	+/- 30 min	TELESCOPE: IRTF
FRACTION	+/- 1/32	
SP0-001B	DRW NO: SP6-001A	SCALE: NOTED
NEXT ASSY	SIZE: A	JOS NO: 725
		SHEET: 1 OF 1

PLOT: 10/19/99