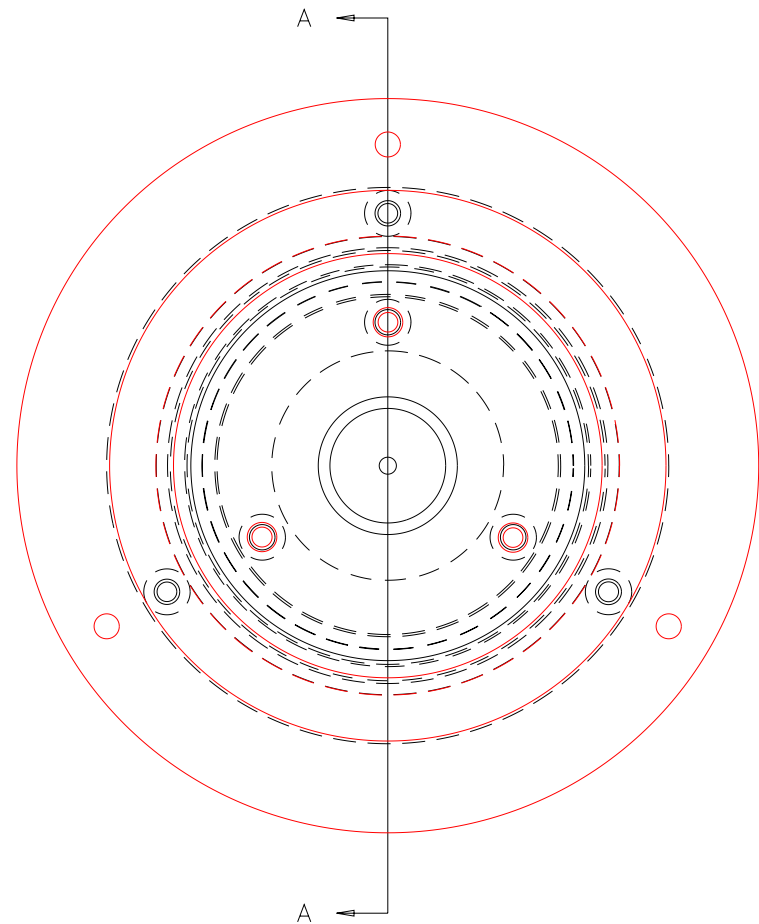
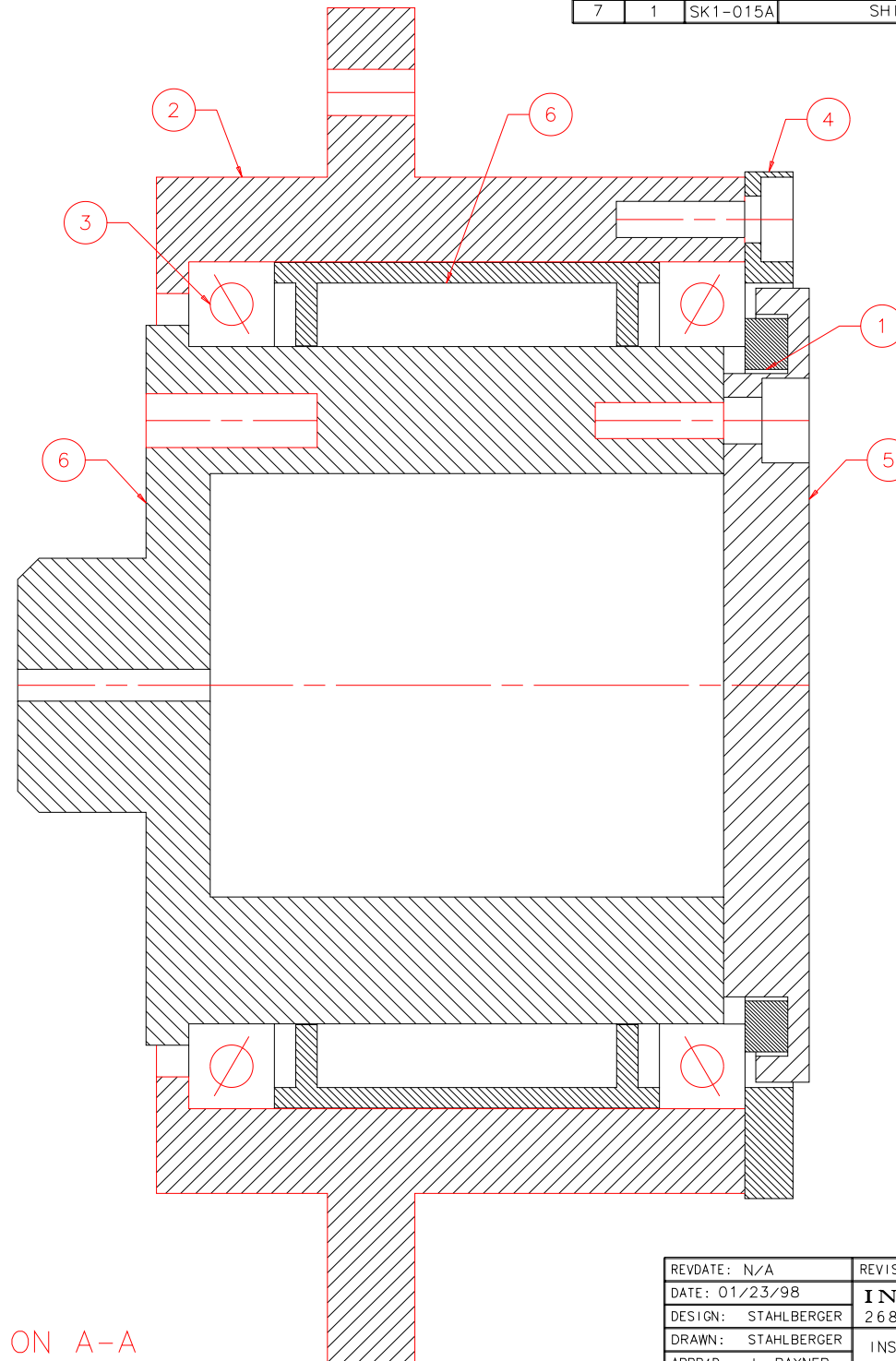


NOTES: UNLESS OTHERWISE NOTED  
 1. MACHINED SURFACE ROUGHNESS 64  
 O-RING GROOVES AND SURFACES 32  
 2. REMOVE ALL BURRS/SHARP CORNERS

BILL OF MATERIAL						
NO.	REQ'D	REF DRW	DESCRIPTION	MATERIAL		
N/A	1	SK1-001B	BEARING MOUNT	N/A		
1	1	N/A	BRG. PRELOAD SSB-0217(SMALLEY)	STAINLESS		
2	1	SK1-011A	HOUSING	STAINLESS 303		
3	2	N/A	KAYDON BEARING KA020ARO	STAINLESS		
4	1	SK1-012A	OUTER BEARING RETAINER	STAINLESS 303		
5	1	SK1-013A	PRELOAD RING	STAINLESS 303		
6	1	SK1-014A	SHAFT	STAINLESS 303		
7	1	SK1-015A	SHIELDED SPACER	STAINLESS 303		



FRONT  
SCALE FULL



SECTION A-A  
SCALE 2:1

REVDATE: N/A	REVISION: N/A
DATE: 01/23/98	<b>INSTITUTE FOR ASTRONOMY</b>
DESIGN: STAHLBERGER	2680 WOODLAWN DR. HONOLULU, HI 96822
DRAWN: STAHLBERGER	INSTRUMENT: SPEX - CROSS DISPERSED SPECTROGRAPH
APPR'D: J. RAYNER	PART NAME: BEARING MOUNT
<b>TOLERANCES</b>	TELESCOPE: IRTF
X.X +/- .015	DRW NO: SK1-001B
X.XX +/- .005	SCALE: NOTED
X.XXX +/- .002	SIZE: B
ANGLE +/- 30 min	JOS NO: 725
FRACTION +/- 1/32	SHEET: 1 OF 1