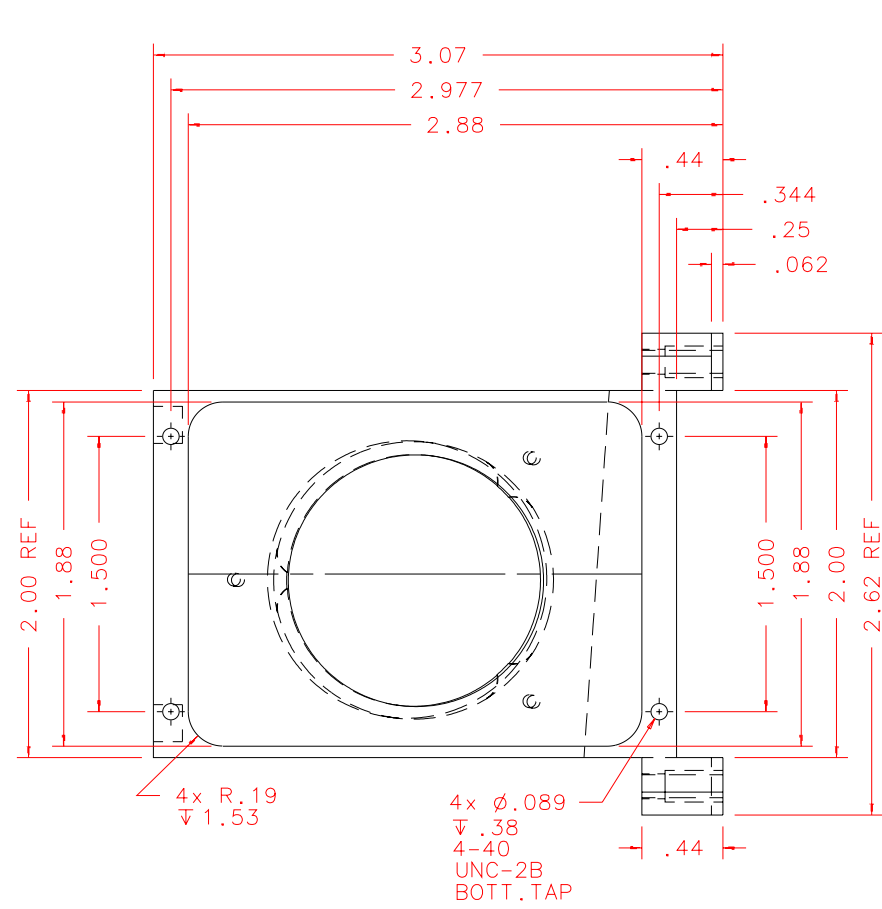
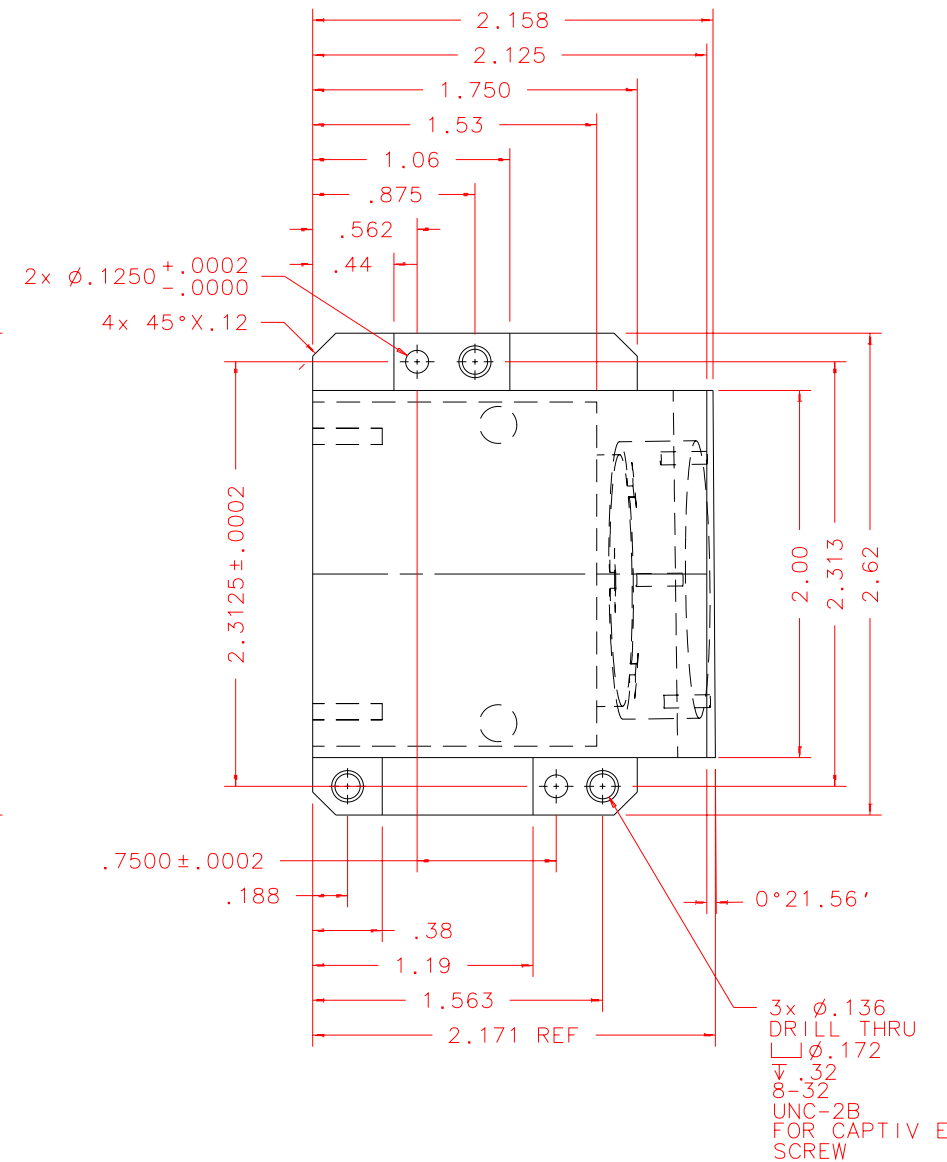


NOTES: UNLESS OTHERWISE NOTED  
 1. MACHINED SURFACE ROUGHNESS 64  
 O-RING GROOVES AND SURFACES 32  
 2. REMOVE ALL BURRS/SHARP CORNERS

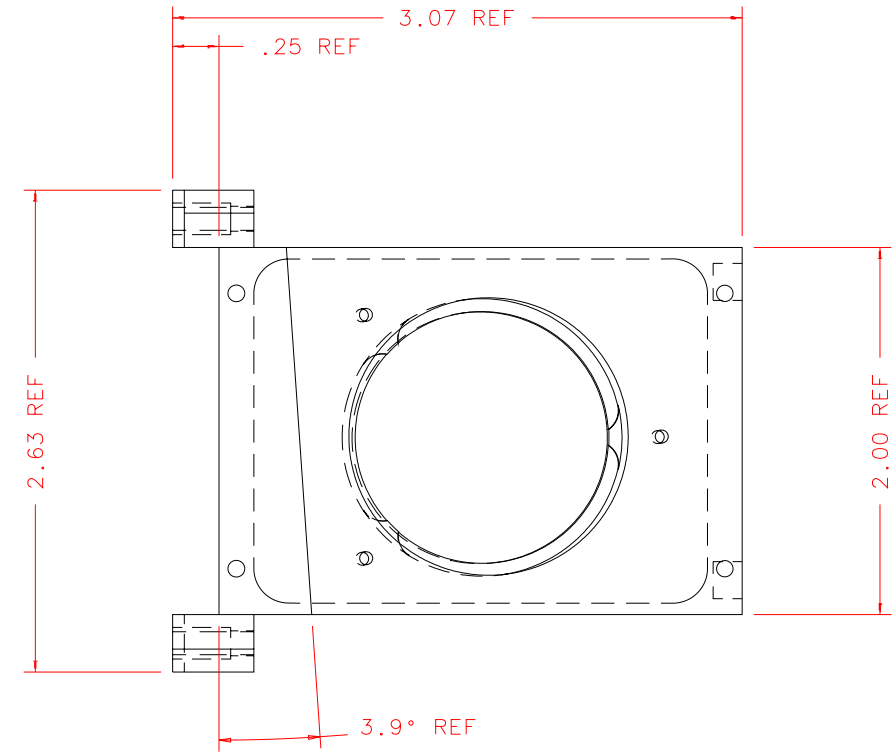
BILL OF MATERIAL				
NO.	REQ'D	REF	DESCRIPTION	MATERIAL
N/A	1	SK10-011B	ALIGNMENT MIRROR MOUNT	ALU 6061-T6



LEFT: SCALE 1:1



FRONT: SCALE 1:1



RIGHT: SCALE 1:1

PLOT: 10/19/99

SK10-001B	REVD: N/A	REVISION: N/A	INSTITUTE FOR ASTRONOMY
NEXT ASSY	DATE: 08/10/99	DESIGN: STAHLBERGER	2680 WOODLAWN DR. HONOLULU, HI 96822
	DRAWN: STAHLBERGER	APPR'D: J. RAYNER	INSTRUMENT: SPEX - CROSS DISPERSED SPECTROGRAPH
	<b>TOLERANCES</b>		PART NAME: ALIGNMENT MIRROR MOUNT
	X.X	+/- .015	TELESCOPE: IRTF
	X.XX	+/- .005	
	X.XXX	+/- .002	DRW NO: SK10-011B
	ANGLE	+/- 30 min	SCALE: NOTED
	FRACTION	+/- 1/32	SIZE: B
			JOS NO: 725
			SHEET: 1 OF 3