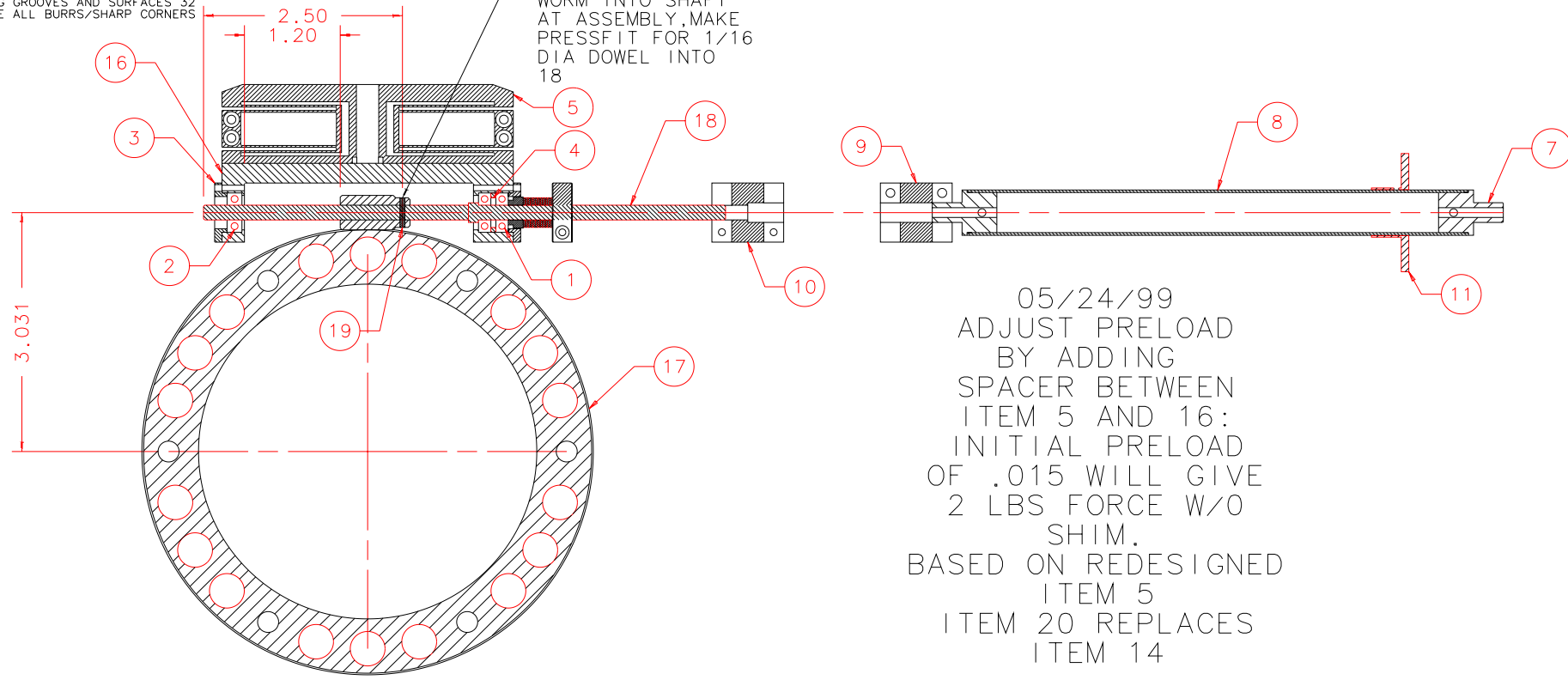


NOTES: UNLESS OTHERWISE NOTED

1. MACHINED SURFACE ROUGHNESS 64
2. O-RING GROOVES AND SURFACES 32
3. REMOVE ALL BURRS/SHARP CORNERS

TRANSFER HOLE FROM WORM INTO SHAFT AT ASSEMBLY, MAKE PRESSFIT FOR 1/16 DIA DOWEL INTO 18

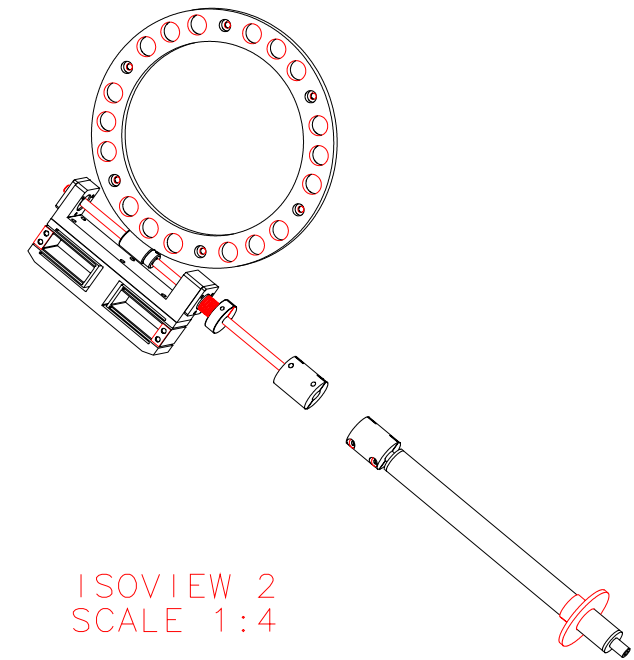


05/24/99
 ADJUST PRELOAD BY ADDING SPACER BETWEEN ITEM 5 AND 16:
 INITIAL PRELOAD OF .015 WILL GIVE 2 LBS FORCE W/O SHIM.
 BASED ON REDESIGNED ITEM 5
 ITEM 20 REPLACES ITEM 14

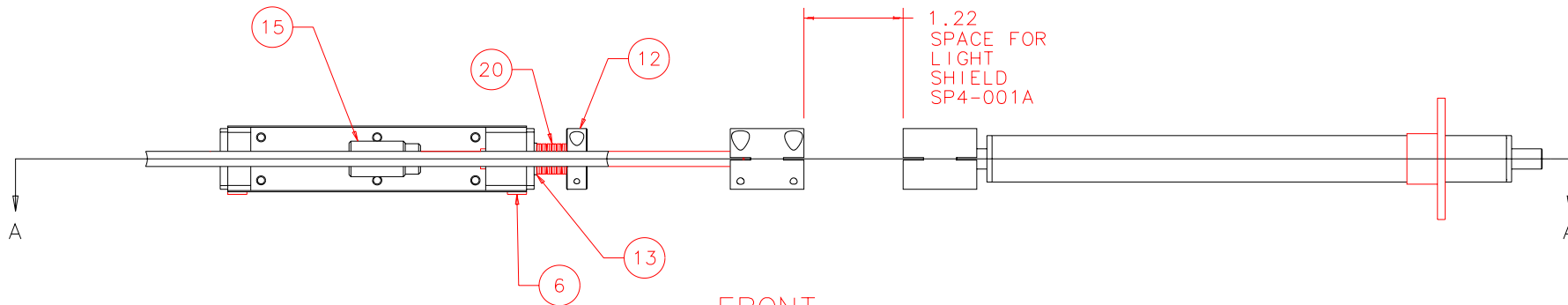
$$CD = (5.625 + .4375) / 2 = 3.031$$

SECTION A-A
 SCALE 1:2

BILL OF MATERIAL				
NO.	REQ'D	REF DRW	DESCRIPTION	MATERIAL
N/A	1	SK3-001B	FLEX DRIVE	N/A
1	2	N/A	ANG. CONTACT BRG B14-2(BERG)	STAINLESS
2	1	N/A	BALL BRG B1-26(BERG)	STAINLESS
3	2	SK3-011A	BEARING RETAINER	ALU 6061-T6
4	1	N/A	BRG SPACER SS3-15(BERG)	STAINLESS
5	1	SK3-021B	FLEX STAGE REDESIGNED	ALU 7075-T651
6	2	SK3-013A	EDM FLEX STAGE SPACER	ALU 6061-T6
7	2	SP0-013A	END TRIM	ALU 6061-T6
8	1	SK3-014A	G-10 TUBE	G-10
9	1	N/A	HELICAL CPLG ACRO75-8-8	ALU
10	1	N/A	HELICAL CPLG ACRO75-8-6	ALU
11	1	SP0-023A	LIGHT BAFFLE	ALU 6061-T6
12	1	SK3-015A	PRELOAD CLAMP	ALU 6061-T6
13	1	SK3-016A	PRELOAD DISK	ALU 6061-T6
14	1	N/A	PRELOAD SPRING MC04505-AS(M&R)	STAINLESS
15	1	SK3-020A	WORM MOD W32S-3S	VESPEL SP-3
16	1	SK3-022A	WORM BRACKET REDESIGNED	ALU 6061-T6
17	1	SK3-018A	WORM GEAR MOD W32B29-S180	BRONZE
18	1	SK3-019A	WORM SHAFT	STAINLESS 303
19	1	N/A	DOWEL PIN D12-8	STAINLESS
20	12	N/A	BELLEVILLE WASHER ST-4(BERG)	STAINLESS



ISOVIEW 2
 SCALE 1:4



FRONT
 SCALE 1:2

REVDATE: 05/24/99	REVISION: REDESIGN ITEMS 5 AND 16
REVDATE: 05/20/99	REVISION: UPDATE DRW FOR NEW FLEX STAGE
REVDATE: N/A	REVISION: N/A
DATE: 01/23/98	INSTITUTE FOR ASTRONOMY
DESIGN: STAHLBERGER	2680 WOODLAWN DR. HONOLULU, HI 96822
DRAWN: STAHLBERGER	INSTRUMENT: SPEX - CROSS DISPERSED SPECTROGRAPH
APPR'D: J. RAYNER	PART NAME: FLEX DRIVE
TOLERANCES	
X.X	+/- .015
X.XX	+/- .005
X.XXX	+/- .002
ANGLE	+/- 30 min
FRACTION	+/- 1/32

SK0-001B	DRW NO: SK3-001B	SCALE: NOTED
NEXT ASSY	SIZE: B	JOS NO: 725
		SHEET: 1 OF 1