

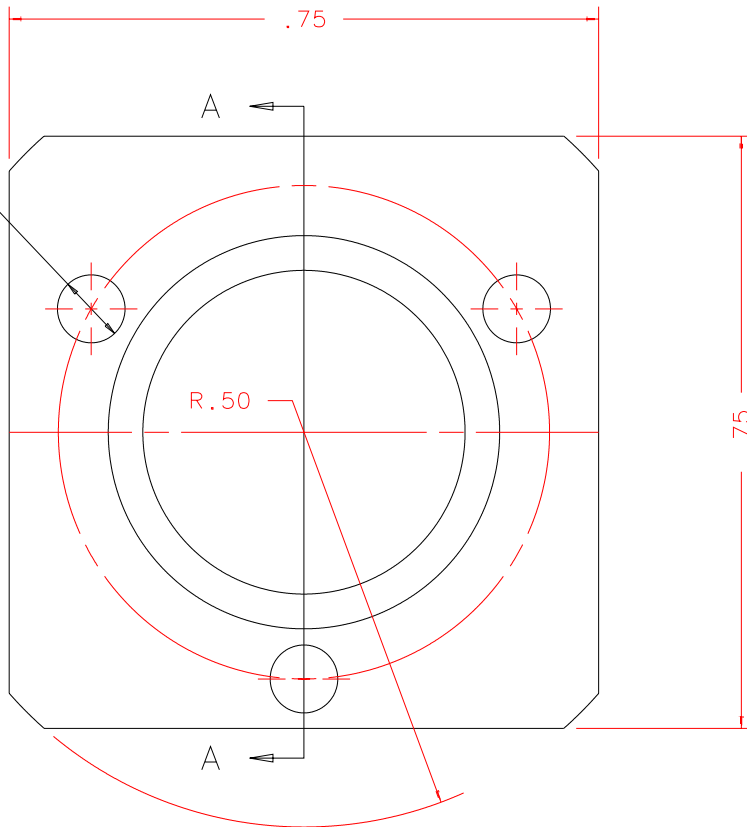
NOTES: UNLESS OTHERWISE NOTED

1. MACHINED SURFACE ROUGHNESS 64
O-RING GROOVES AND SURFACES 32
2. REMOVE ALL BURRS/SHARP CORNERS

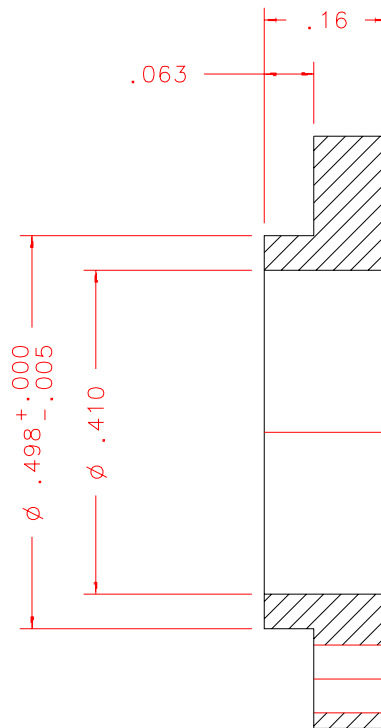
BILL OF MATERIAL

NO.	REQ'D	REF DRW	DESCRIPTION	MATERIAL
N/A	2	SK3-011A	BEARING RETAINER	ALU 6061-T6

3x ϕ .086
DRILL
THRU
EQ. SPCD
ON ϕ .625



FRONT



SECTION A-A

REVDATE: 09/14/98	REVISION: CHANGE FROM 4 TO 3 HOLES .086
REVDATE: N/A	REVISION: N/A
DATE: 12/17/97	INSTITUTE FOR ASTRONOMY 2680 WOODLAWN DR. HONOLULU, HI 96822
DESIGN: STAHLBERGER	
DRAWN: STAHLBERGER	INSTRUMENT: SPEX - CROSS DISPERSED SPECTROGRAPH
APPR'D: J. RAYNER	PART NAME: BEARING RETAINER
TOLERANCES	
X.X	+/- .015
X.XX	+/- .005
X.XXX	+/- .002
ANGLE	+/- 30 min
FRACTION	+/- 1/32
DRW NO: SK3-011A	SCALE: 2:1
SIZE: A	JOS NO: 725
SHEET: 1 OF 1	

SK3-001B
NEXT ASSY

PLOT: 10/19/99