

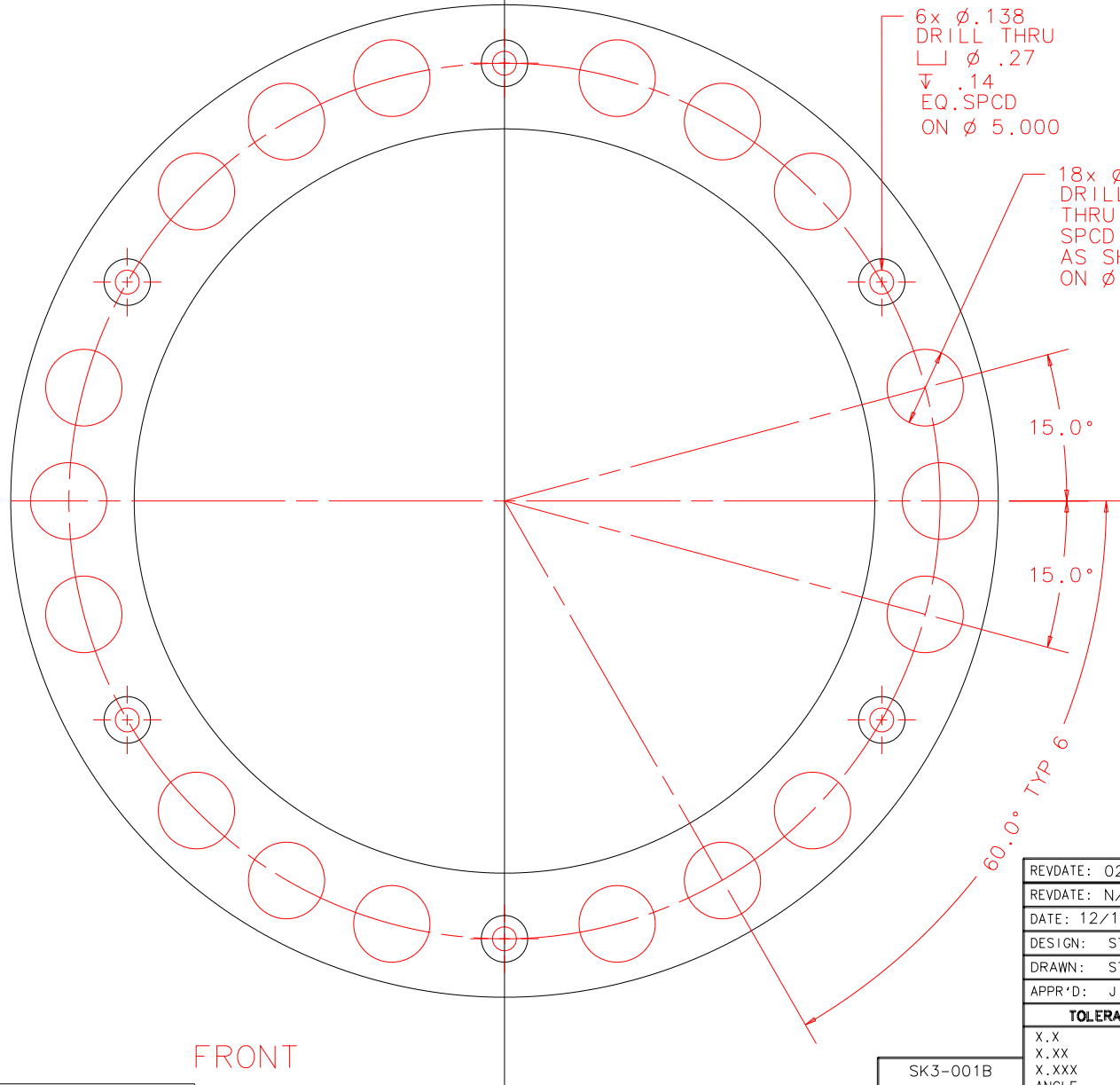
NOTES: UNLESS OTHERWISE NOTED

1. MACHINED SURFACE ROUGHNESS 64  
O-RING GROOVES AND SURFACES 32
2. REMOVE ALL BURRS/SHARP CORNERS

MAKE FROM PURCHASED PART:  
P/N W32B29-S180 (BERG INC.)

BILL OF MATERIAL

NO.	REQ'D	REF DRW	DESCRIPTION	MATERIAL
N/A	1	SK3-018A	WORM GEAR MOD W32B29-S180	BRONZE



6x  $\phi$ .138  
DRILL THRU  
 $\square$   $\phi$  .27  
 $\nabla$  .14  
EQ.SPCD  
ON  $\phi$  5.000

18x  $\phi$ .44  
DRILL  
THRU  
SPCD  
AS SHOWN  
ON  $\phi$  5.000

$\phi$  4.250  $^{+.001}_{-.000}$

15.0°

15.0°

60.0° TYP 6

BORE TO BE  
CONCENTRIC  
TO PD OF GEAR  
TO .001 TIR

FRONT

REVDATE: 02/27/98	REVISION: ADD 18 MASS REDUCING HOLES
REVDATE: N/A	REVISION: N/A
DATE: 12/18/97	<b>INSTITUTE FOR ASTRONOMY</b>
DESIGN: STAHLBERGER	2680 WOODLAWN DR. HONOLULU, HI 96822
DRAWN: STAHLBERGER	INSTRUMENT: SPEX - CROSS DISPERSED SPECTROGRAPH
APPR'D: J. RAYNER	PART NAME: WORM GEAR MOD W32B29-S180
<b>TOLERANCES</b>	
X.X	+/- .015
X.XX	+/- .005
X.XXX	+/- .002
ANGLE	+/- 30 min
FRACTION	+/- 1/32
TELESCOPE: IRTF	
DRW NO: SK3-018A	SCALE: 1:1
SIZE: A	JOS NO: 725
	SHEET: 1 OF 1

PLOT: 10/19/99

SK3-001B
NEXT ASSY