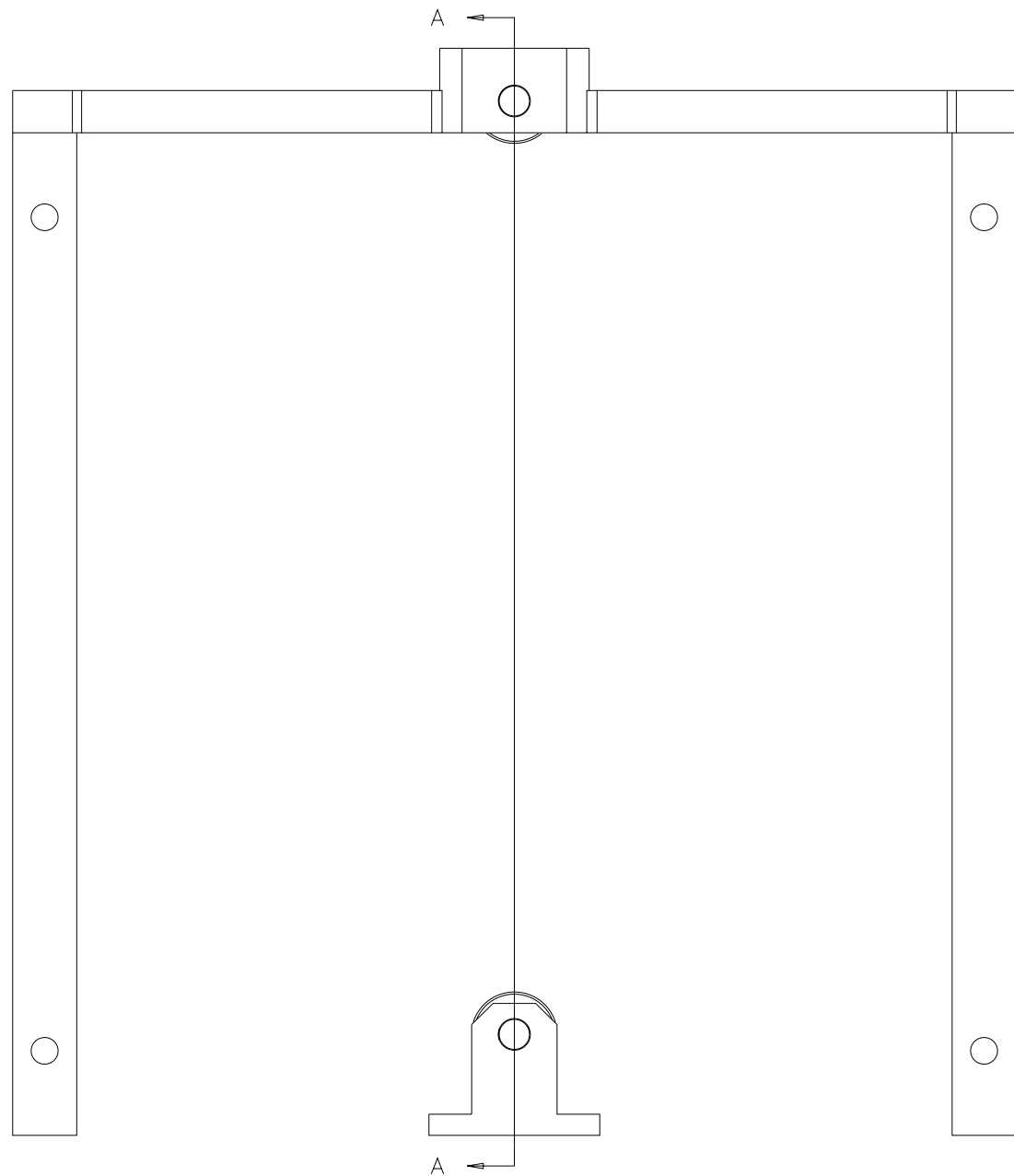
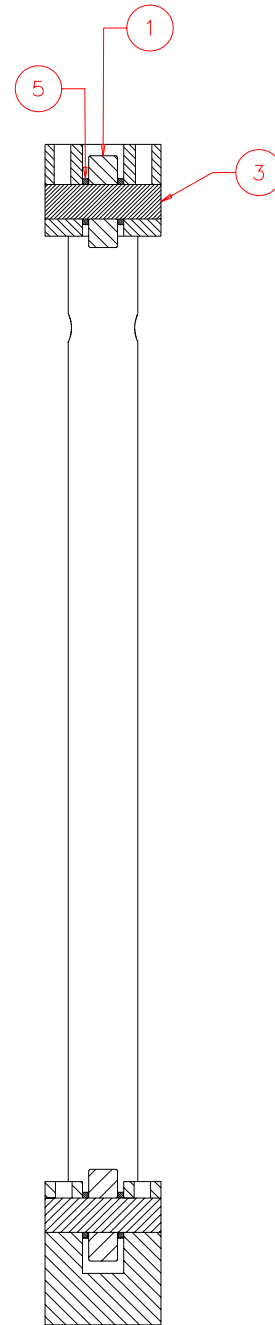


NOTES: UNLESS OTHERWISE NOTED  
 1. MACHINED SURFACE ROUGHNESS 64  
 O-RING GROOVES AND SURFACES 32  
 2. REMOVE ALL BURRS/SHARP CORNERS

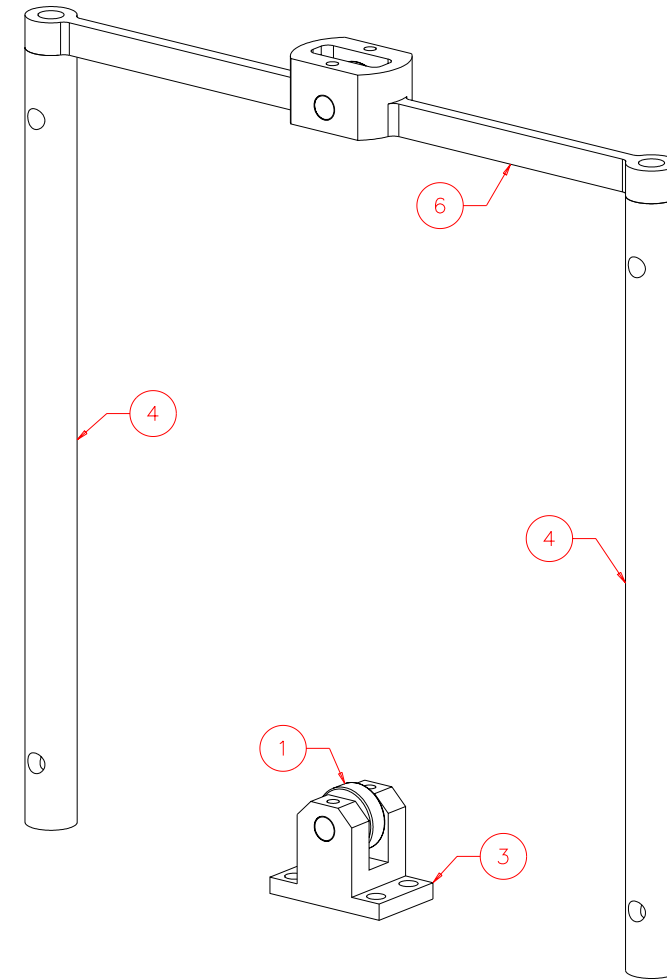
BILL OF MATERIAL					
NO.	REQ'D	REF DRW	DESCRIPTION	MATERIAL	
N/A	1	SK4-001B	GUIDE BEARING	N/A	
1	2	N/A	BALL BEARING B11-4(BERG)	STAINLESS	
2	1	SK4-011A	GUIDE BEARING MOUNT	ALU 6061-T6	
3	2	SK4-012A	GUIDE BEARING SHAFT	STAINLESS 303	
4	2	SK4-013A	POST	ALU 6061-T6	
5	4	N/A	SHAFT SPACER SS1-22(BERG)	STAINLESS	
6	1	SK4-014A	SPRING BEAM	ALU 7075-T6	



FRONT: SCALE FULL



SECTION A-A  
SCALE FULL



ISOMETRIC:  
SCALE 3/4

REVDATE: 02/04/99	REVISION: UPDATE DRW. DUE TO SK4-014A
REVDATE: N/A	REVISION: N/A
DATE: 01/26/98	<b>INSTITUTE FOR ASTRONOMY</b>
DESIGN: STAHLBERGER	2680 WOODLAWN DR. HONOLULU, HI 96822
DRAWN: STAHLBERGER	INSTRUMENT: SPEX - CROSS DISPERSED SPECTROGRAPH
APPR'D: J. RAYNER	PART NAME: GUIDE BEARING
<b>TOLERANCES</b>	TELESCOPE: IRTF
X.X +/- .015	DRW NO: SK4-001B
X.XX +/- .005	SCALE: NOTED
X.XXX +/- .002	SIZE: B
ANGLE +/- 30 min	JOS NO: 725
FRACTION +/- 1/32	SHEET: 1 OF 1