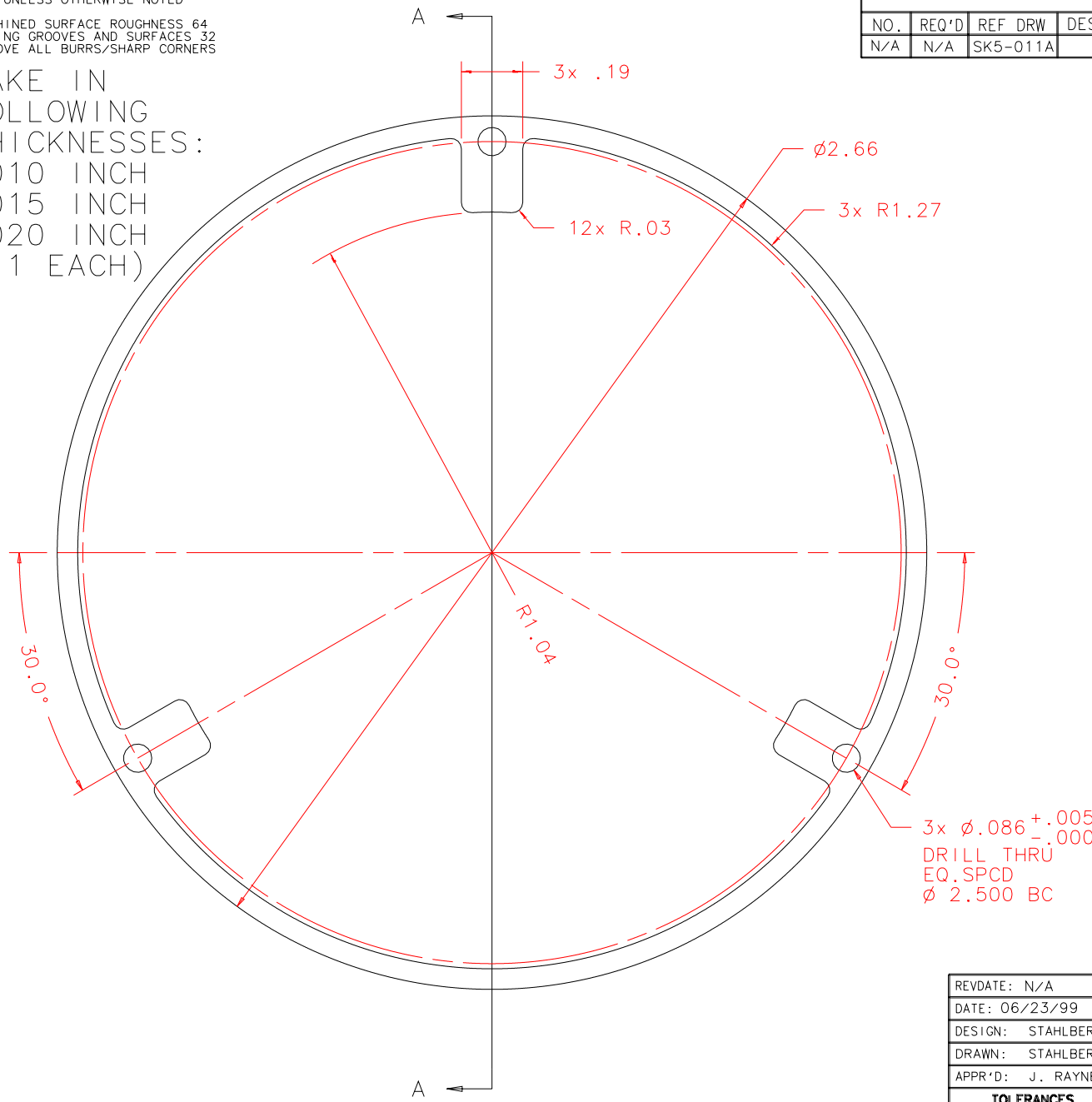


NOTES: UNLESS OTHERWISE NOTED

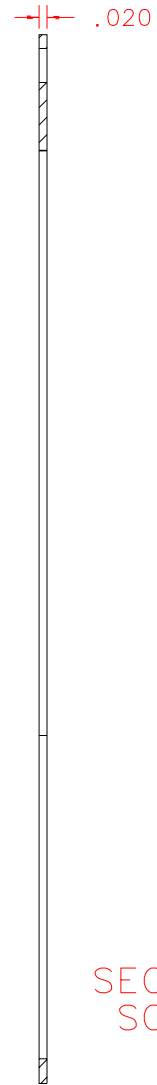
1. MACHINED SURFACE ROUGHNESS 64
O-RING GROOVES AND SURFACES 32
2. REMOVE ALL BURRS/SHARP CORNERS

MAKE IN
FOLLOWING
THICKNESSES:
.010 INCH
.015 INCH
.020 INCH
(1 EACH)



FRONT: SCALE 2:1

BILL OF MATERIAL				
NO.	REQ'D	REF DRW	DESCRIPTION	MATERIAL
N/A	N/A	SK5-011A	SXD1 AXIAL SPRING	PHOS. BRONZE



SECTION A-A
SCALE 2:1

3x $\phi .086^{+.005}_{-.000}$
DRILL THRU
EQ. SPCD
 $\phi 2.500$ BC

REVDATE: N/A	REVISION: N/A
DATE: 06/23/99	INSTITUTE FOR ASTRONOMY
DESIGN: STAHLBERGER	2680 WOODLAWN DR. HONOLULU, HI 96822
DRAWN: STAHLBERGER	INSTRUMENT: SPEX - CROSS DISPERSED SPECTROGRAPH
APPR'D: J. RAYNER	PART NAME: SXD1 AXIAL SPRING
TOLERANCES	TELESCOPE: IRTF
X.X +/- .015	DRW NO: SK5-011A
X.XX +/- .005	SCALE: NOTED
X.XXX +/- .002	SIZE: A
ANGLE +/- 30 min	JOS NO: 725
FRACTION +/- 1/32	SHEET: 1 OF 1

PLOT: 10/19/99

SK5-001B
NEXT ASSY