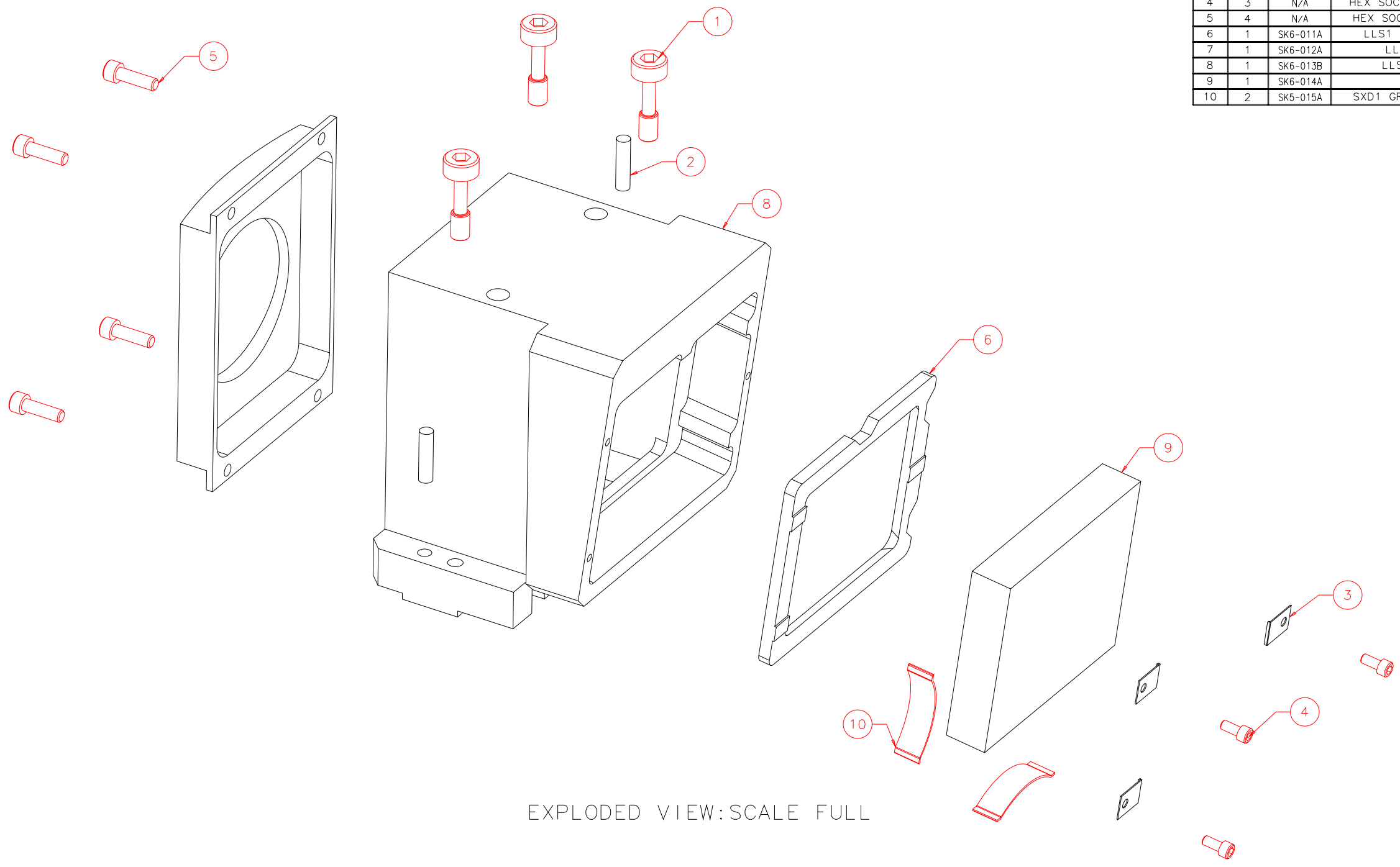


NOTES: UNLESS OTHERWISE NOTED  
 1. MACHINED SURFACE ROUGHNESS 64  
 O-RING GROOVES AND SURFACES 32  
 2. REMOVE ALL BURRS/SHARP CORNERS



EXPLODED VIEW: SCALE FULL

BILL OF MATERIAL				
NO.	REQ'D	REF DRW	DESCRIPTION	MATERIAL
N/A	1	SK6-001B	LLS1 MOUNT	N/A
1	3	N/A	CAPTIVE SCREW Z12-6-H(BERG)	STAINLESS
2	2	N/A	DOWEL PIN 1/8 x 1/2 D14-10(BERG)	STAINLESS
3	3	SK5-026A	GRATING CLIP	PHOS.BRONZE
4	3	N/A	HEX SOCKET HEAD 2-56 x 3/16	STAINLESS
5	4	N/A	HEX SOCKET HEAD 4-40 x 3/8	STAINLESS
6	1	SK6-011A	LLS1 AXIAL SUPPORT/MASK	ALU 6061-T6
7	1	SK6-012A	LLS1 FRONT BAFFLE	ALU 6061-T6
8	1	SK6-013B	LLS1 GRATING MOUNT	ALU 6061-T6
9	1	SK6-014A	LLS1 GRATING	GLASS
10	2	SK5-015A	SXD1 GRATING SPRING RADIAL	PHOS.BRONZE

REVDATE: N/A	REVISION: N/A
DATE: 09/29/99	<b>INSTITUTE FOR ASTRONOMY</b>
DESIGN: STAHLBERGER	2680 WOODLAWN DR. HONOLULU, HI 96822
DRAWN: STAHLBERGER	INSTRUMENT: SPEX - CROSS DISPERSED SPECTROGRAPH
APPR'D: J. RAYNER	PART NAME: LLS1 MOUNT
<b>TOLERANCES</b>	TELESCOPE: IRTF
X.X +/- .015	
X.XX +/- .005	
X.XXX +/- .002	
ANGLE +/- 30 min	
FRACTION +/- 1/32	

SK11-001B	DRW NO: SK6-001B	SCALE: NOTED
NEXT ASSY	SIZE: B	JOS NO: 725
		SHEET: 1 OF 2