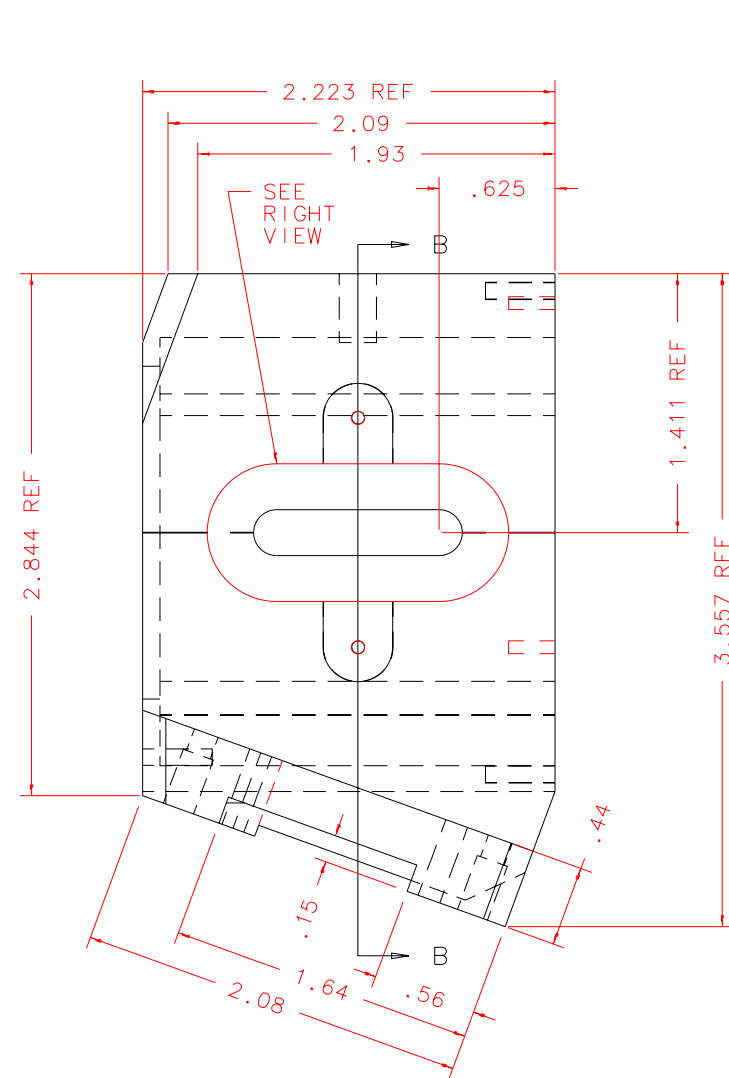
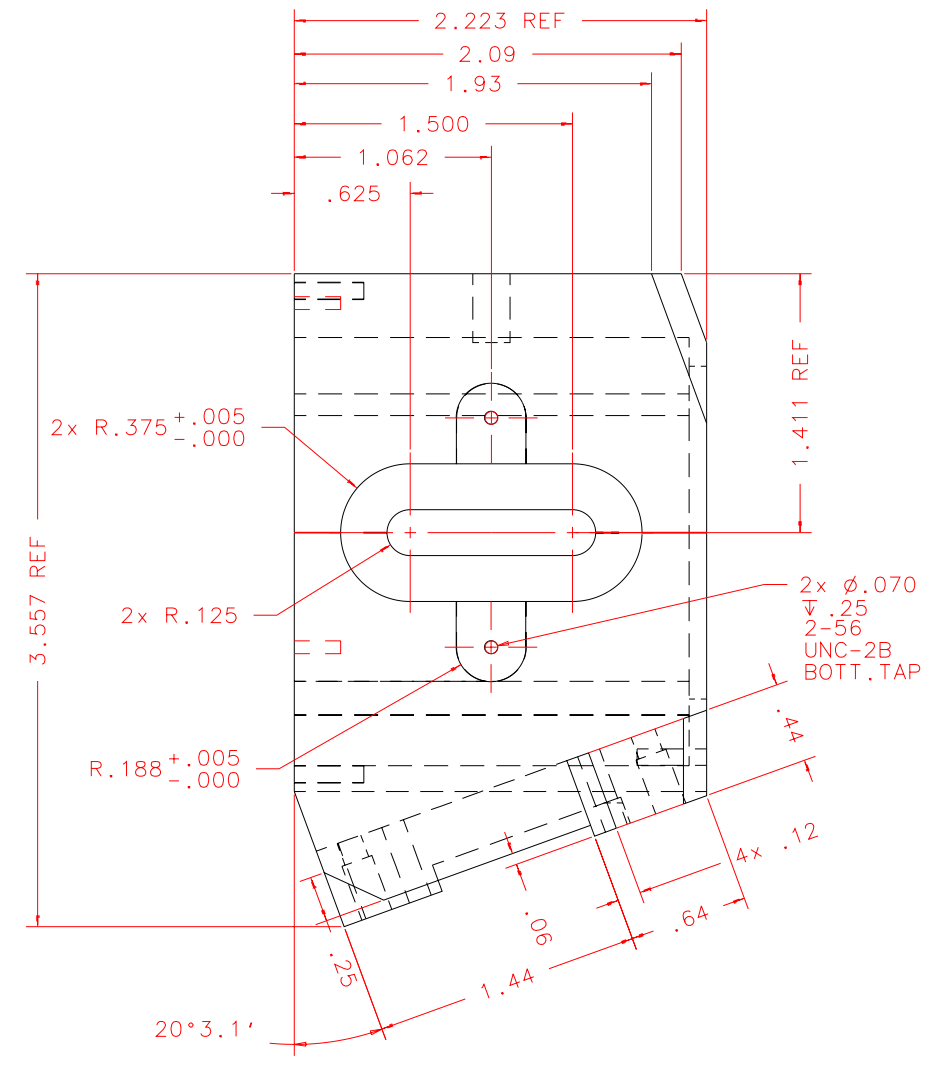


NOTES: UNLESS OTHERWISE NOTED  
 1. MACHINED SURFACE ROUGHNESS 64  
 O-RING GROOVES AND SURFACES 32  
 2. REMOVE ALL BURRS/SHARP CORNERS

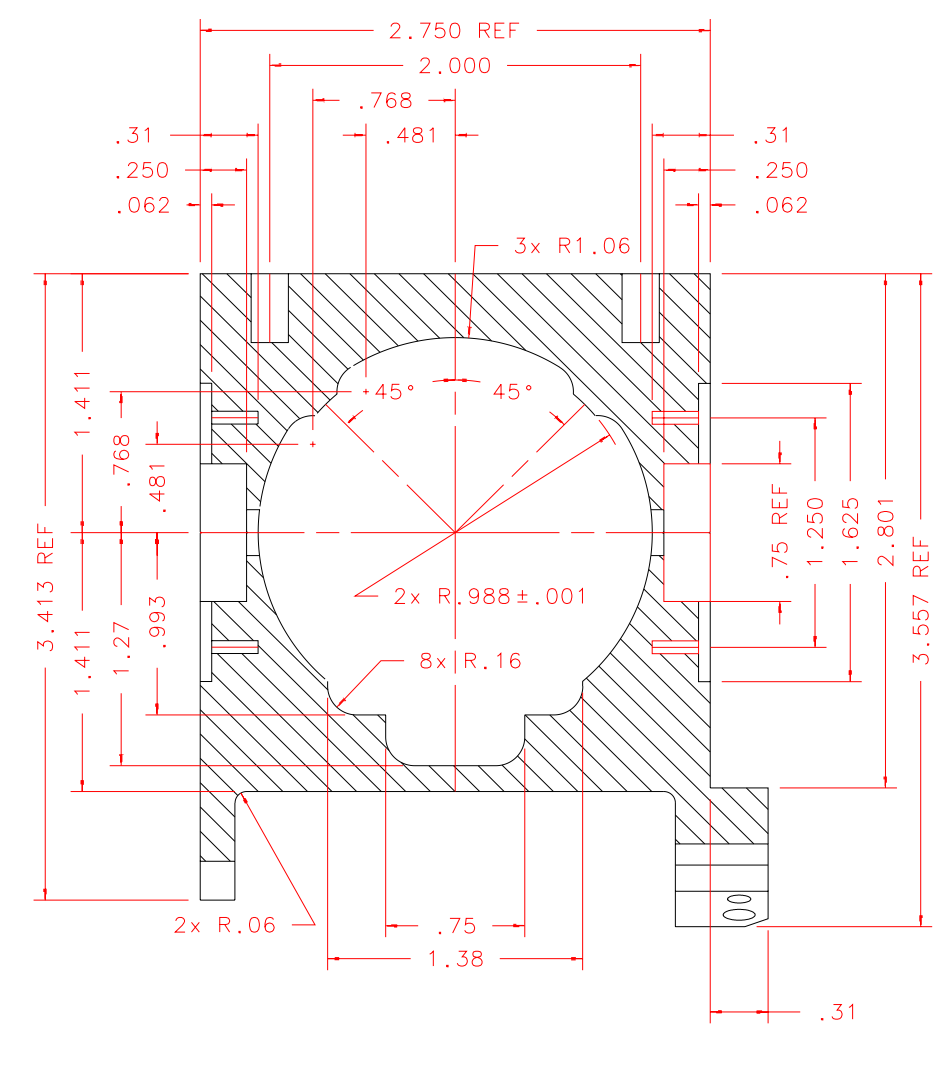
BILL OF MATERIAL				
NO.	REQ'D	REF DRW	DESCRIPTION	MATERIAL
N/A	1	SK7-013B	LOR1 PRISM MOUNT	ALU 6061-T6



LEFT



RIGHT



SECTION B-B

PLOT: 10/19/99

SK7-001B	
NEXT ASSY	

REVDATE: 10/01/99	REVISION: ADD VIEW 11 (HOLE PATTERN)
DATE: 09/21/99	REVISION: N/A
DESIGN: STAHLBERGER	<b>INSTITUTE FOR ASTRONOMY</b>
DRAWN: STAHLBERGER	2680 WOODLAWN DR. HONOLULU, HI 96822
APPR'D: J. RAYNER	INSTRUMENT: SPEX - CROSS DISPERSED SPECTROGRAPH
<b>TOLERANCES</b>	PART NAME: LOR1 PRISM MOUNT
X.X +/- .015	TELESCOPE: IRTF
X.XX +/- .005	
X.XXX +/- .002	
ANGLE +/- 30 min	
FRACTION +/- 1/32	
DRW NO: SK7-013B	SCALE: 1:1
SIZE: B	JOS NO: 725
	SHEET: 2 OF 3