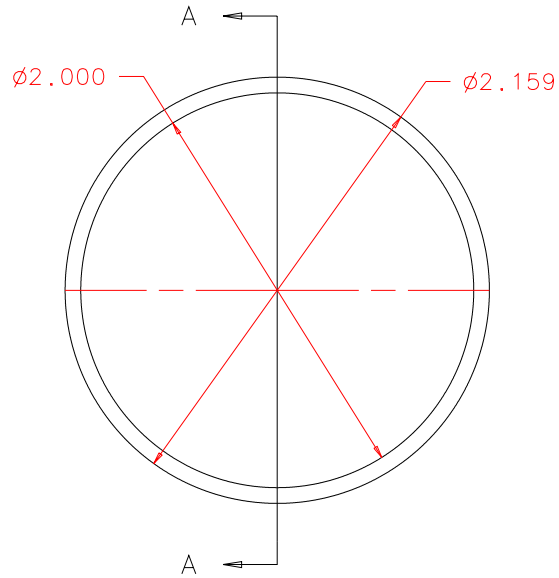


NOTES: UNLESS OTHERWISE NOTED

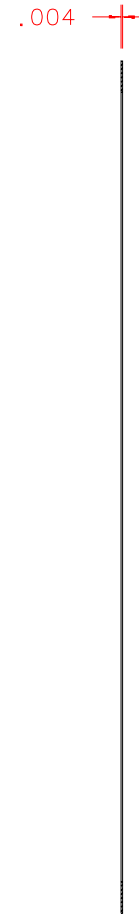
1. MACHINED SURFACE ROUGHNESS 64
O-RING GROOVES AND SURFACES 32
2. REMOVE ALL BURRS/SHARP CORNERS

NOTE: THIS SPACER
WILL BE CUT OPEN
FOR THE PURPOSE
OF EVACUATION
BETWEEN PRISMS;
DONE BY JOHN R.

BILL OF MATERIAL				
NO.	REQ'D	REF DRW	DESCRIPTION	MATERIAL
N/A	1	SK8-015A	LXD1 PRISM SPACER	BRASS,P-BRONZE



FRONT:SCALE 1:1



SECTION A-A:SCALE 2:1

PLOT:10/19/99

SK8-001B
NEXT ASSY

REVDATE: N/A	REVISION: N/A	
DATE: 09/07/99	INSTITUTE FOR ASTRONOMY 2680 WOODLAWN DR. HONOLULU, HI 96822	
DESIGN: STAHLBERGER		
DRAWN: STAHLBERGER		
APPR'D: J. RAYNER		
TOLERANCES		INSTRUMENT: SPEX - CROSS DISPERSED SPECTROGRAPH
X.X	+/- .015	PART NAME: LXD1 PRISM SPACER
X.XX	+/- .005	TELESCOPE: IRTF
X.XXX	+/- .002	DRW NO: SK8-015A
ANGLE	+/- 30 min	SCALE: NOTED
FRACTION	+/- 1/32	SIZE: A
		JOS NO: 725
		SHEET: 1 OF 1