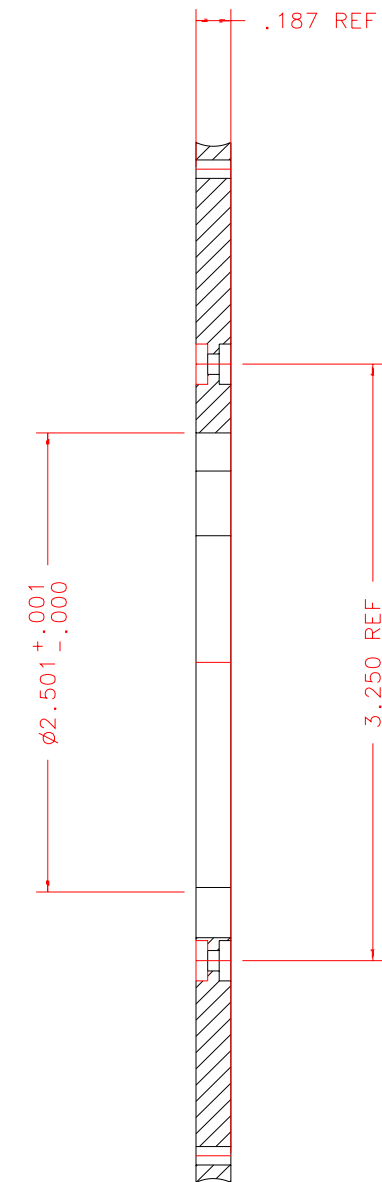
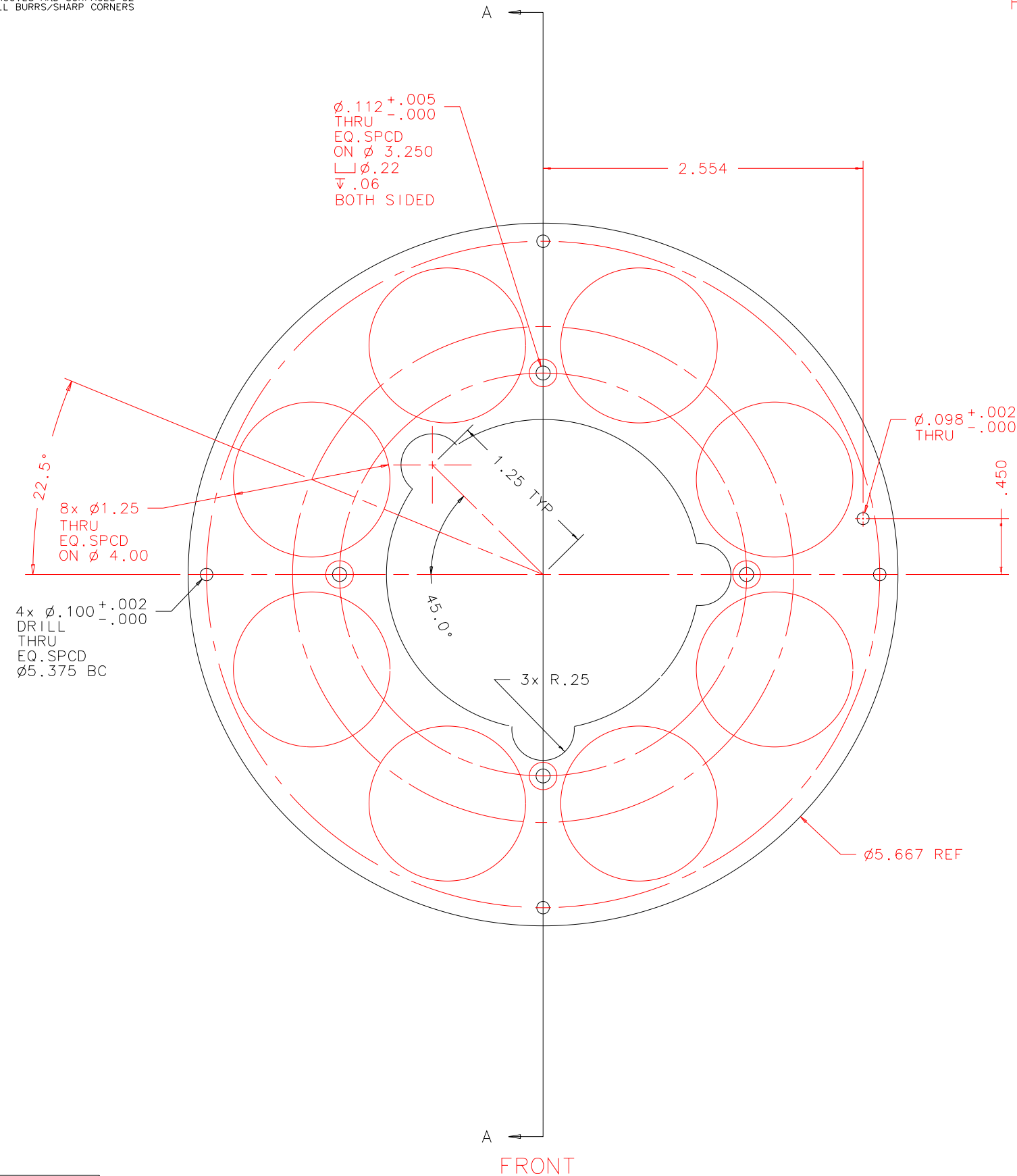


NOTES: UNLESS OTHERWISE NOTED
 1. MACHINED SURFACE ROUGHNESS 64
 O-RING GROOVES AND SURFACES 32
 2. REMOVE ALL BURRS/SHARP CORNERS

MAKE FROM PURCHASED
 PART P/N W32B29-180
 W.M.BERG INC.
 SUPPLIED BY IFA

BILL OF MATERIAL				
NO.	REQ'D	REF DRW	DESCRIPTION	MATERIAL
N/A	1	SG10-014B	WORM GEAR MOD W32B29-S180	BRONZE QQ-B-637



SECTION A-A

PLOT: 10/19/99

SG10-001B
NEXT ASSY

REVDATE: 01/26/99	REVISION: ADD 4 HOLES FOR MAGNESTS
REVDATE: 01/22/99	REVISION: ADD 3 CLEARANCE EARS
REVDATE: N/A	REVISION: N/A
DATE: 05/19/98	INSTITUTE FOR ASTRONOMY
DESIGN: STAHLBERGER	2680 WOODLAWN DR. HONOLULU, HI 96822
DRAWN: STAHLBERGER	INSTRUMENT: SPEX - CROSS DISPERSED SPECTROGRAPH
APPR'D: J. RAYNER	PART NAME: WORM GEAR MOD W32B29-S180
TOLERANCES	
X.X	+/- .015
X.XX	+/- .005
X.XXX	+/- .002
ANGLE	+/- 30 min
FRACTION	+/- 1/32
DRW NO: SG10-014B	SCALE: 1:1
SIZE: B	JOS NO: 725
SHEET: 1 OF 1	