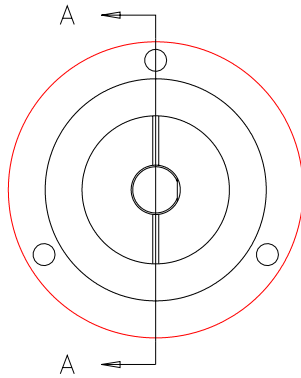


NOTES: UNLESS OTHERWISE NOTED

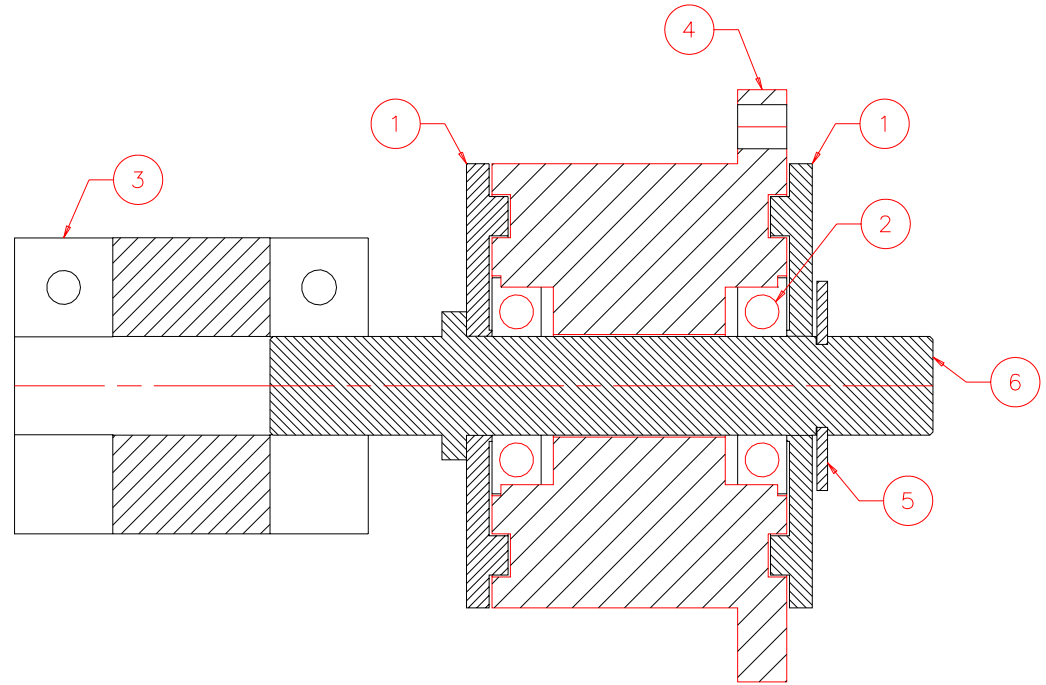
1. MACHINED SURFACE ROUGHNESS 64
- O-RING GROOVES AND SURFACES 32
2. REMOVE ALL BURRS/SHARP CORNERS

NOTE: THE COLUMN
REQ'D SHOWS THE
TOTAL NUMBER OF
PARTS NEEDED TO
MAKE 2 ASSEMBLIES

BILL OF MATERIAL				
NO.	REQ'D	REF DRW	DESCRIPTION	MATERIAL
N/A	2	SG12-001A	LIGHT SHIELD	N/A
1	4	SP4-011A	BAFFLE	ALU 6061-T6
2	4	N/A	BALL BEARING B2-11(BERG)	STAINLESS
3	2	N/A	HELICAL COUPLING ACR075-8-8	ALU
4	2	SP4-012A	HOUSING	ALU 6061-T6
5	2	N/A	RETAINER Q1-25(BERG)	STAINLESS
6	2	SP4-013A	SHAFT	STAINLESS 303



FRONT: SCALE 1:1



SECTION A-A: SCALE 2:1

REVDATE: N/A	REVISION: N/A
DATE: 05/18/98	INSTITUTE FOR ASTRONOMY 2680 WOODLAWN DR. HONOLULU, HI 96822
DESIGN: STAHLBERGER	
DRAWN: STAHLBERGER	
APPR'D: J. RAYNER	
TOLERANCES	
X.X	+/- .015
X.XX	+/- .005
X.XXX	+/- .002
ANGLE	+/- 30 min
FRACTION	+/- 1/32
INSTRUMENT: SPEX - CROSS DISPERSED SPECTROGRAPH	
PART NAME: LIGHT SHIELD	
TELESCOPE: IRTF	
DRW NO: SG12-001A	SCALE: NOTED
SIZE: A	JOS NO: 725
SHEET: 1 OF 1	

PLOT: 10/19/99

SG0-001B
NEXT ASSY