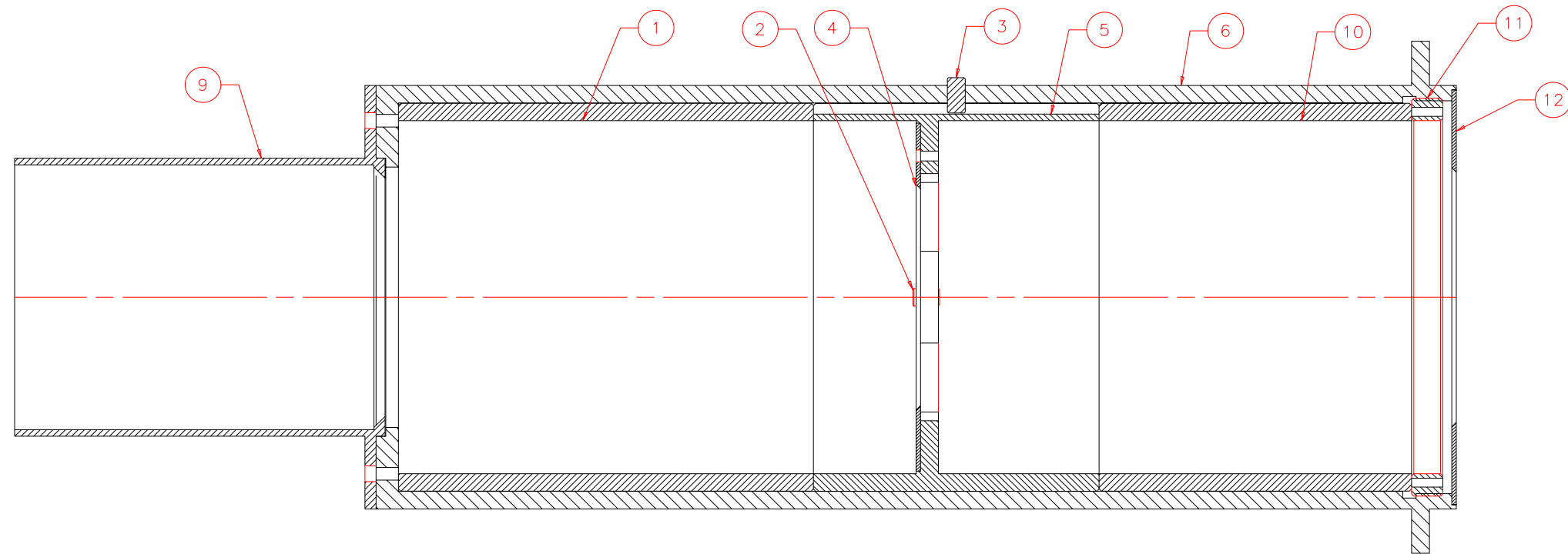


NOTES: UNLESS OTHERWISE NOTED  
 1. MACHINED SURFACE ROUGHNESS 64  
 O-RING GROOVES AND SURFACES 32  
 2. REMOVE ALL BURRS/SHARP CORNERS

BILL OF MATERIAL				
NO.	REQ'D	REF DRW	DESCRIPTION	MATERIAL
N/A	1	SG5-001B	FP BAFFLE	N/A
1	1	SG5-011A	BACK SPACER	ALU 6061-T6
2	2	N/A	DOWEL PIN D14-4(BERG)	STAINLESS
3	1	N/A	DOWEL PIN D14-6(BERG)	STAINLESS
4	1	SG5-017A	FP BAFFLE	ALU 6061-T6
5	1	SG5-018A	FP BAFFLE SUPPORT TV	HARD BRASS
6	1	SG5-019B	FP BAFFLE TUBE TV	ALU 6061-T6
7	1	SG5-014A	FP PINHOLE BAFFLE	ALU 6061-T6
8	1	SG5-015A	FP PINHOLE BAFFLE FRONT	ALU 6061-T6
9	1	SG5-016A	FP SNOOT	ALU 6061-T6
10	1	SG5-020A	FRONT SPACER	ALU 6061-T6
11	1	SG5-021A	THREADED NUT	HARD BRASS
12	1	SG5-022A	FP ENTRANCE BAFFLE	ALU 6061-T6



SECTION A-A: SCALE 1:1

REVDATE: 02/26/99	REVISION: UPDATE DRAWING
REVDATE: 12/02/98	REVISION: ADD 12
REVDATE: N/A	REVISION: N/A
DATE: 06/15/98	<b>INSTITUTE FOR ASTRONOMY</b>
DESIGN: STAHLBERGER	2680 WOODLAWN DR. HONOLULU, HI 96822
DRAWN: STAHLBERGER	INSTRUMENT: SPEX - CROSS DISPERSED SPECTROGRAPH
APPR'D: J. RAYNER	PART NAME: FP BAFFLE
<b>TOLERANCES</b>	TELESCOPE: IRTF
X.X +/- .015	DRW NO: SG5-001B
X.XX +/- .005	SCALE: NOTED
X.XXX +/- .002	SIZE: B
ANGLE +/- 30 min	JOS NO: 725
FRACTION +/- 1/32	SHEET: 2 OF 2

PLOT: 10/19/99

SG0-001B  
 NEXT ASSY