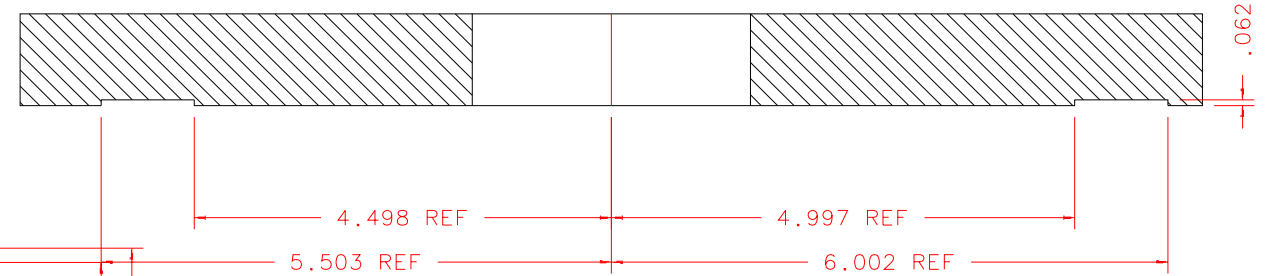
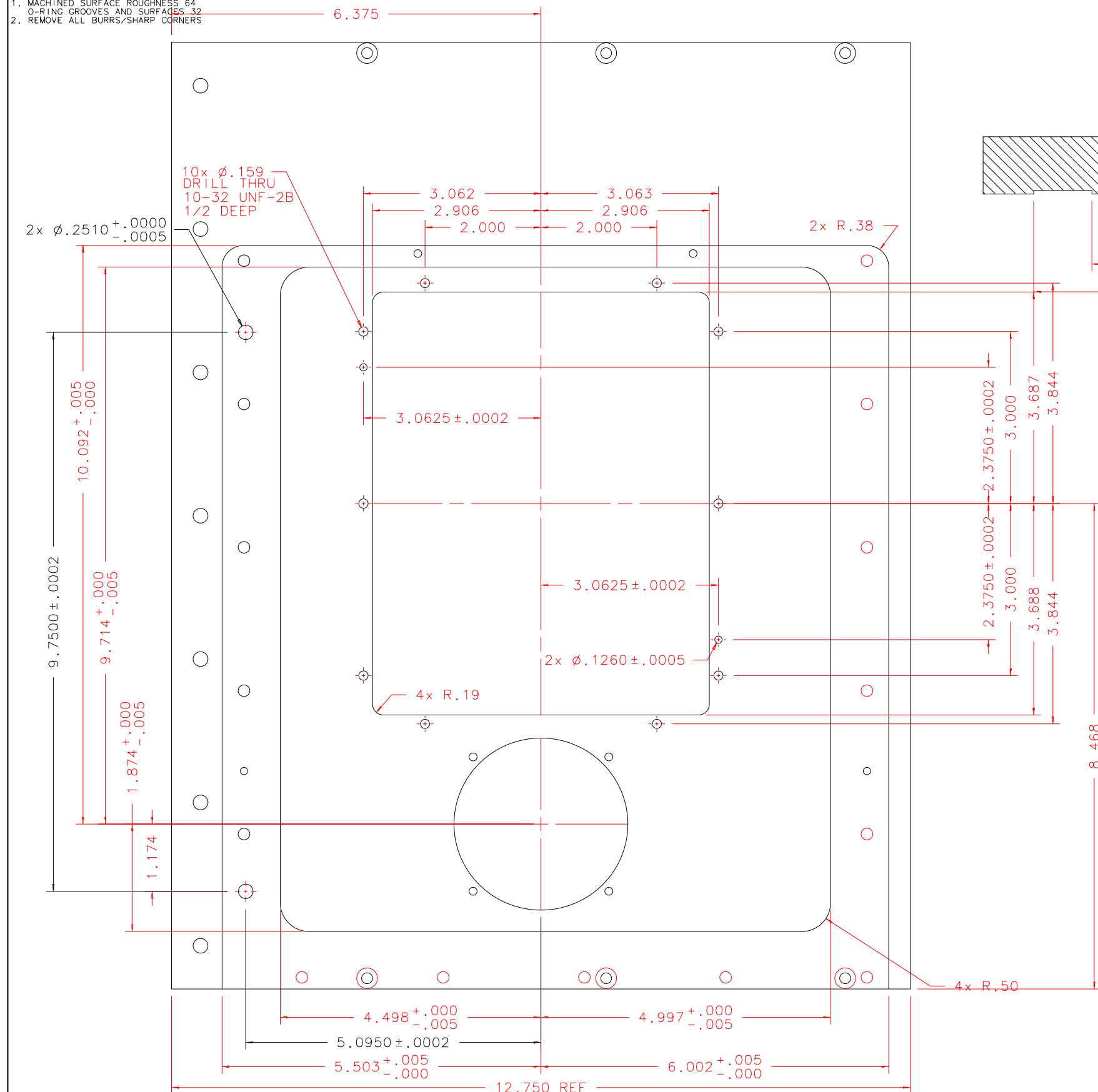


NOTES: UNLESS OTHERWISE NOTED
 1. MACHINED SURFACE ROUGHNESS 64
 O-RING GROOVES AND SURFACES 32
 2. REMOVE ALL BURRS/SHARP CORNERS

BILL OF MATERIAL				
NO.	REQ'D	REF DRW	DESCRIPTION	MATERIAL
N/A	1	SG6-021B	TRUSS MOUNT JIG PLATE	ALU 6061-T6



SECTION B-B

VIEW 5: DUPLICATE OF FRONT VIEW

PLOT: 10/19/99

SG6-001B	REVD: 01/15/99	REVISION: ADD 2 DOWEL HOLES VIEW 5
NEXT ASSY	REVD: N/A	REVISION: N/A
	DATE: 04/23/98	INSTITUTE FOR ASTRONOMY
	DESIGN: STAHLBERGER	2680 WOODLAWN DR. HONOLULU, HI 96822
	DRAWN: STAHLBERGER	INSTRUMENT: SPEX - CROSS DISPERSED SPECTROGRAPH
	APPR'D: J. RAYNER	PART NAME: TRUSS MOUNT JIG PLATE
	TOLERANCES	TELESCOPE: IRTF
	X.X +/- .015	
	X.XX +/- .005	
	X.XXX +/- .002	
	ANGLE +/- 30 min	
	FRACTION +/- 1/32	
	DRW NO: SG6-021B	SCALE: 1:2
	SIZE: B	JOS NO: 725
		SHEET: 2 OF 3