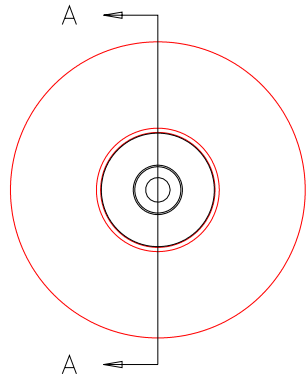


NOTES: UNLESS OTHERWISE NOTED

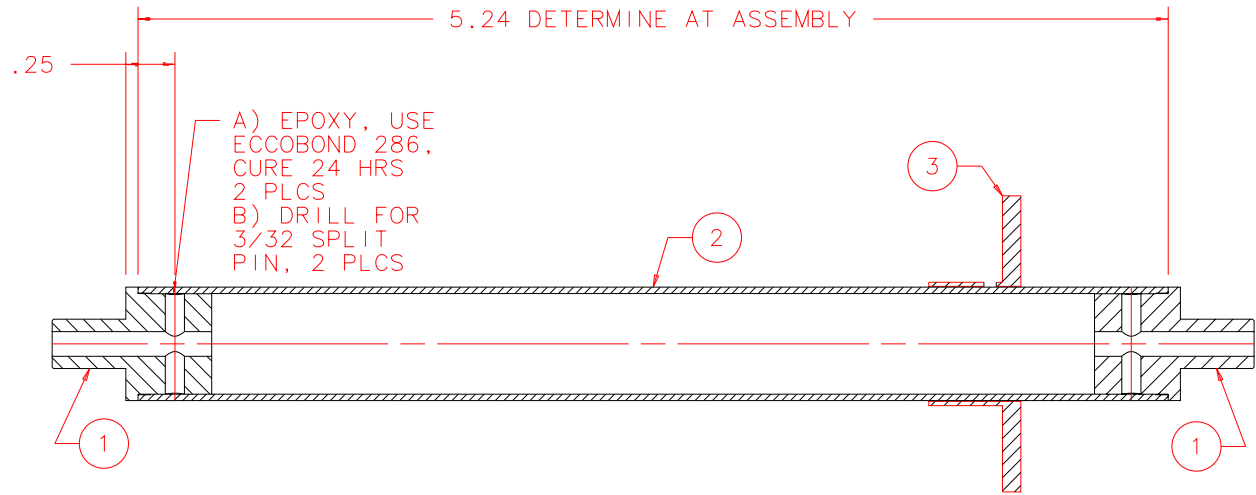
1. MACHINED SURFACE ROUGHNESS 64
O-RING GROOVES AND SURFACES 32
2. REMOVE ALL BURRS/SHARP CORNERS

BILL OF MATERIAL

NO.	REQ'D	REF DRW	DESCRIPTION	MATERIAL
N/A	1	SG7-001A	G-10 INSULATION K-MIRROR	N/A
1	2	SP0-013A	END TRIM	ALU 6061-T6
2	1	SG7-011A	G-10 TUBE K-MIRROR	G-10
3	1	SP0-023A	LIGHT BAFFLE	ALU 6061-T6



FRONT



SECTION A-A

A) EPOXY, USE
ECCOBOND 286,
CURE 24 HRS,
2 PLCS
B) DRILL FOR
3/32 SPLIT
PIN, 2 PLCS

REVDATE: 04/19/99	REVISION: ADD SPLIT PIN + DIMS
REVDATE: N/A	REVISION: N/A
DATE: 05/18/98	INSTITUTE FOR ASTRONOMY 2680 WOODLAWN DR. HONOLULU, HI 96822
DESIGN: STAHLBERGER	
DRAWN: STAHLBERGER	
APPR'D: J. RAYNER	
TOLERANCES	
X.X	+/- .015
X.XX	+/- .005
X.XXX	+/- .002
ANGLE	+/- 30 min
FRACTION	+/- 1/32
DRW NO: SG7-001A	SCALE: 1:1
SIZE: A	JOS NO: 725
SHEET: 1 OF 1	

PLOT: 10/19/99

SG0-001B
NEXT ASSY