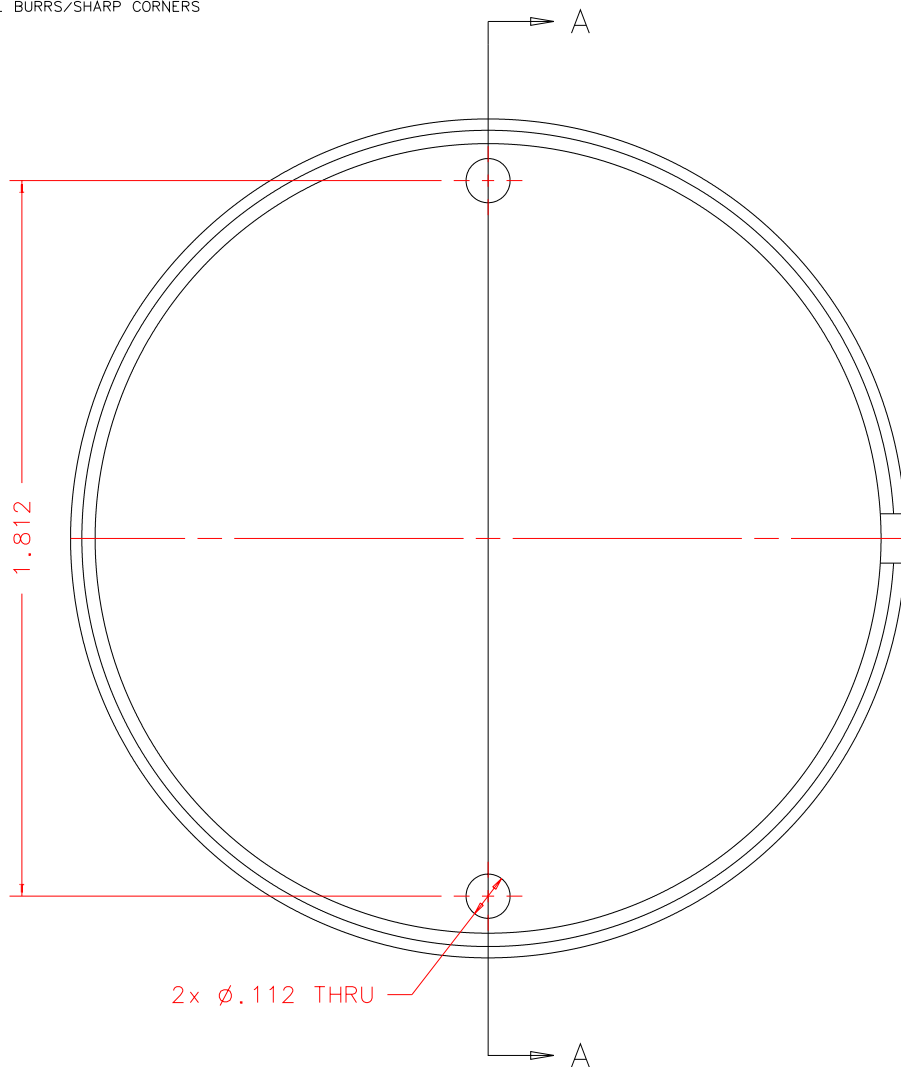


NOTES: UNLESS OTHERWISE NOTED

1. MACHINED SURFACE ROUGHNESS 64
O-RING GROOVES AND SURFACES 32
2. REMOVE ALL BURRS/SHARP CORNERS

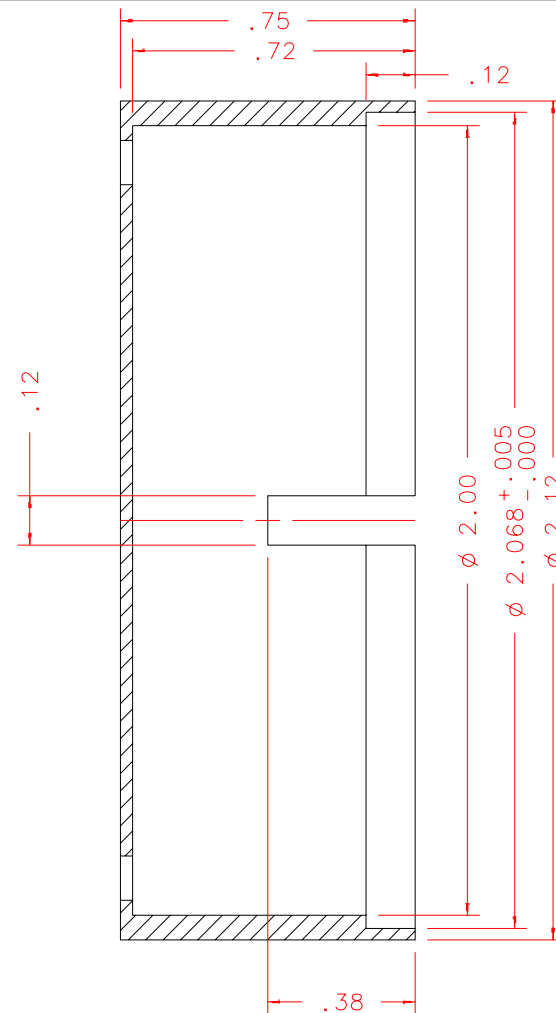
POLISH OUTSIDE SURFACES TO 10 MICRON FINISH



2x ϕ .112 THRU

FRONT

BILL OF MATERIAL				
NO.	REQ'D	REF DRW	DESCRIPTION	MATERIAL
N/A	1	SN1-016A	LIGHT CAP	ALU 6061-T6



SECTION A-A

REVDATE: N/A	REVISION: N/A
DATE: 12/20/97	INSTITUTE FOR ASTRONOMY
DESIGN: STAHLBERGER	2680 WOODLAWN DR. HONOLULU, HI 96822
DRAWN: STAHLBERGER	INSTRUMENT: SPEX - CROSS DISPERSED SPECTROGRAPH
APPR'D: J. RAYNER	PART NAME: LIGHT CAP
TOLERANCES	
X.X +/- .015	TELESCOPE: IRTF
X.XX +/- .005	
X.XXX +/- .002	DRW NO: SN1-016A
ANGLE +/- 30 min	SCALE: 2:1
FRACTION +/- 1/32	SIZE: A
	JOS NO: 725
	SHEET: 1 OF 1

SN2-001B
NEXT ASSY

PLOT:10/19/99