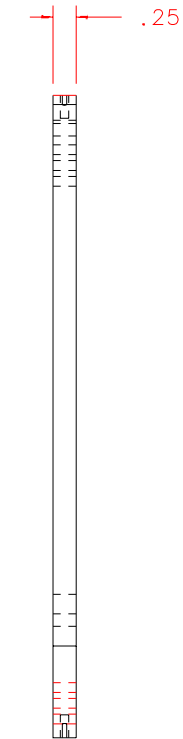
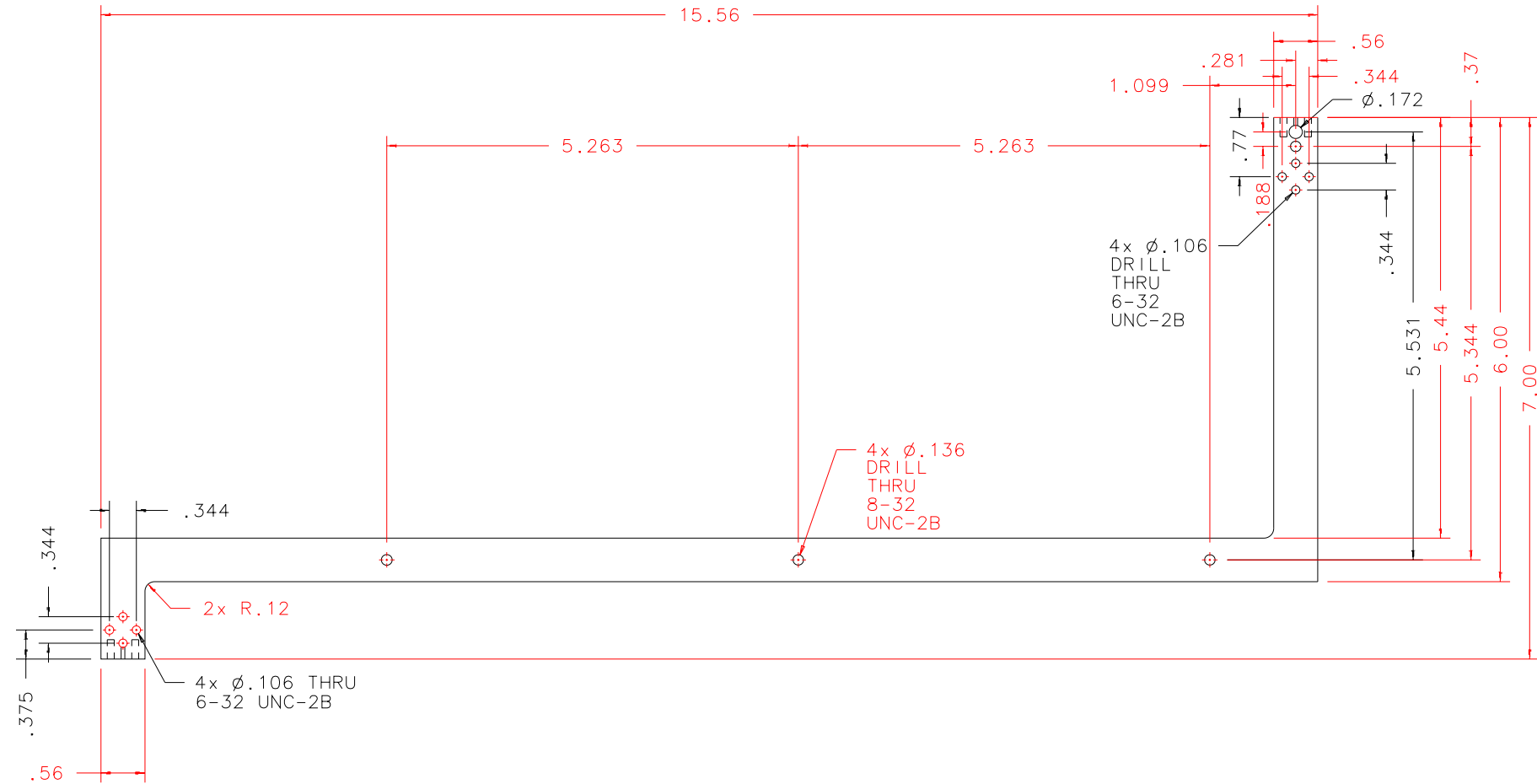
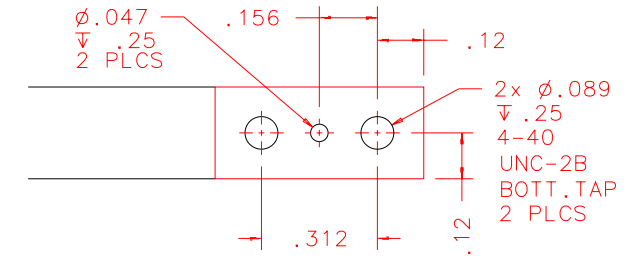
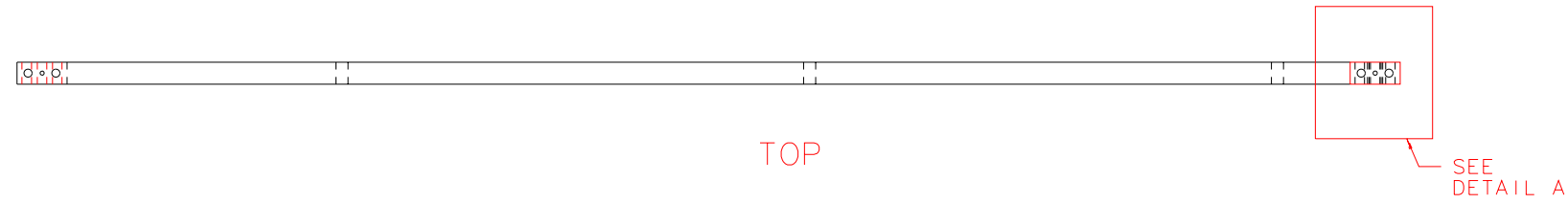


NOTES: UNLESS OTHERWISE NOTED
 1. MACHINED SURFACE ROUGHNESS 64
 O-RING GROOVES AND SURFACES 32
 2. REMOVE ALL BURRS/SHARP CORNERS

BILL OF MATERIAL				
NO.	REQ'D	REF DRW	DESCRIPTION	MATERIAL
N/A	1	SN2-013B	COLD BAR	COPPER OFHC



REVDATE: 05/03/99	REVISION: ADD MISS.DIM 5.531, DIA.172
REVDATE: 04/12/99	REVISION: ADD 2 SETS OF 6-32 TAPPED HOLES
REVDATE: N/A	REVISION: N/A
DATE: 12/29/97	INSTITUTE FOR ASTRONOMY
DESIGN: STAHLBERGER	2680 WOODLAWN DR. HONOLULU, HI 96822
DRAWN: STAHLBERGER	INSTRUMENT: SPEX - CROSS DISPERSED SPECTROGRAPH
APPR'D: J. RAYNER	PART NAME: COLD BAR
TOLERANCES	
X.X	+/- .015
X.XX	+/- .005
X.XXX	+/- .002
ANGLE	+/- 30 min
FRACTION	+/- 1/32
DRW NO: SN2-013B	SCALE: 1:2
SIZE: B	JOS NO: 725
	SHEET: 1 OF 1

PLOT: 10/19/99

SN2-001B
NEXT ASSY