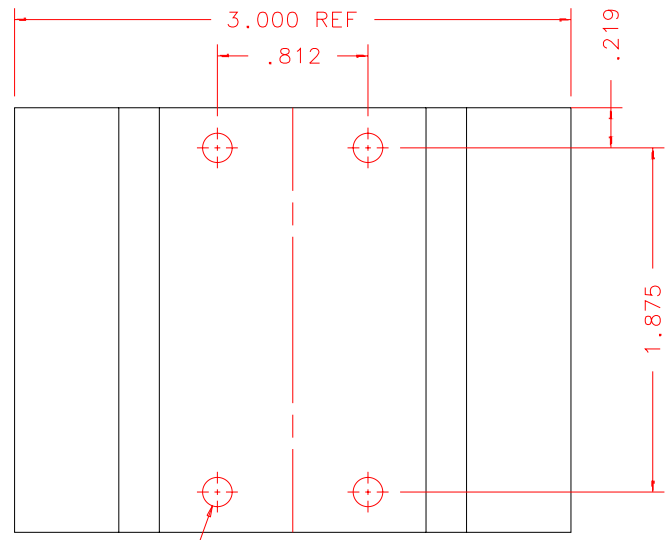
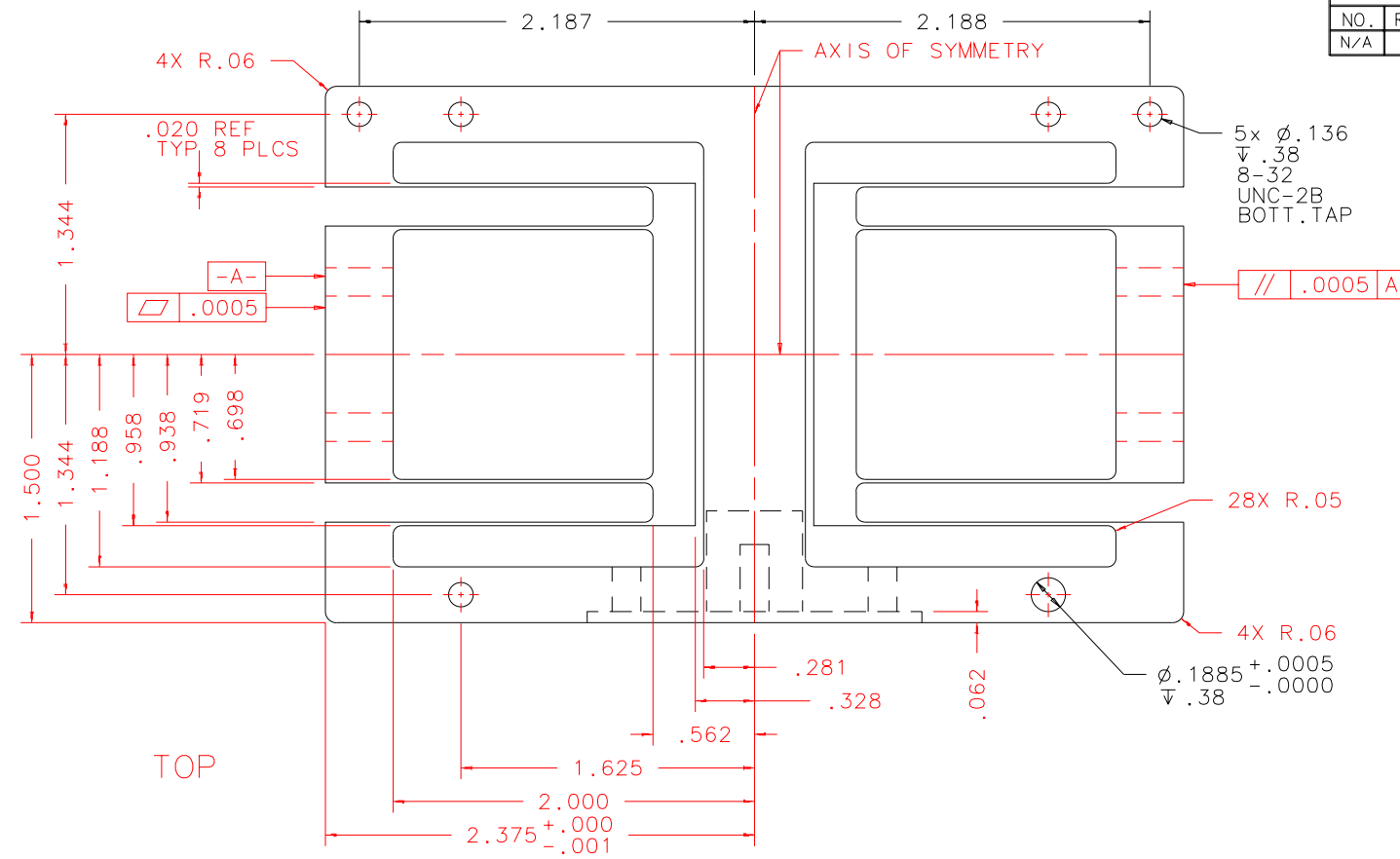


NOTES: UNLESS OTHERWISE NOTED  
 1. MACHINED SURFACE ROUGHNESS 64  
 O-RING GROOVES AND SURFACES 32  
 2. REMOVE ALL BURRS/SHARP CORNERS

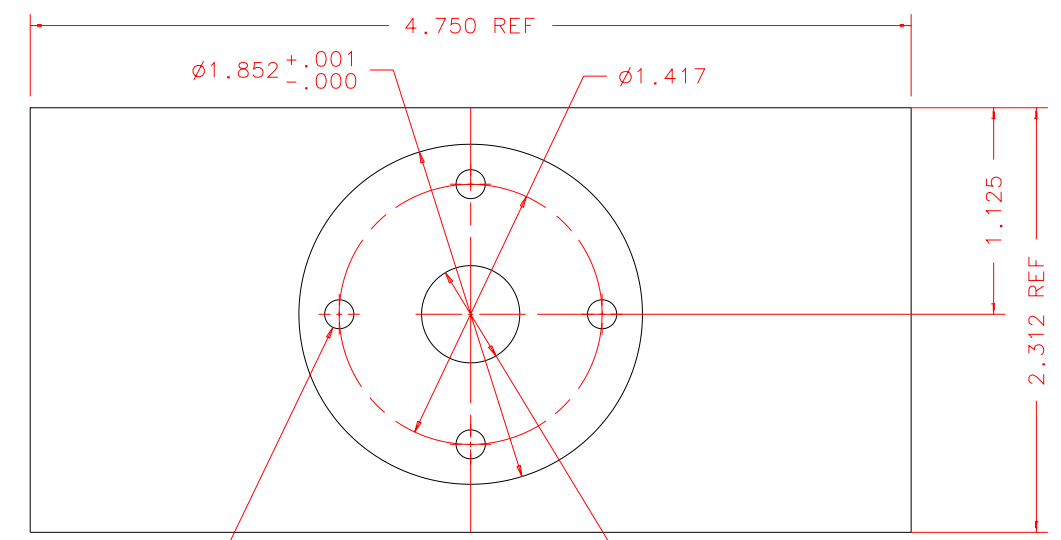
USE EDM  
 WIRECUT  
 PROCESS TO  
 MANUFACTURE  
 THIS PART

| BILL OF MATERIAL |       |          |             |             |
|------------------|-------|----------|-------------|-------------|
| NO.              | REQ'D | REF DRW  | DESCRIPTION | MATERIAL    |
| N/A              | 1     | SN3-014B | FLEX STAGE  | ALU 7075-T6 |



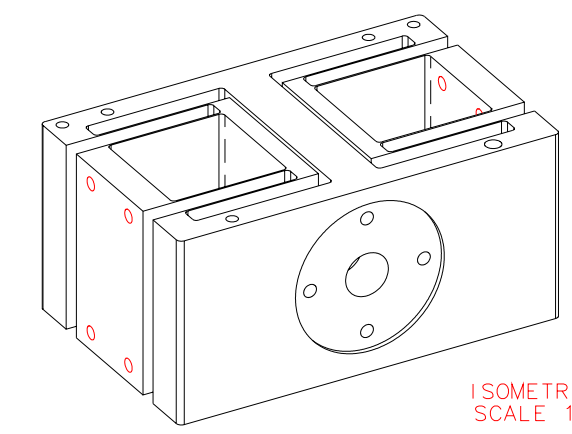
4x  $\phi$ .159  
 DRILL THRU  
 10-32 UNF-2B  
 2 PLCS  
 LEFT AND  
 RIGHT SIDE

LEFT



4x  $\phi$ .159  
 $\nabla$ .38  
 10-32 UNF-2B  
 BOTT. TAP  
 EQ. SPCD  
 ON  $\phi$  1.417

FRONT



ISOMETRIC:  
 SCALE 1:2

|                     |   |
|---------------------|---|
| REVDATE: 06/02/99   | REVISION: ADD 2x 8-32 HLS, DOWEL HOLE           |
| REVDATE: N/A        | REVISION: N/A                                   |
| DATE: 11/06/97      | <b>INSTITUTE FOR ASTRONOMY</b>                  |
| DESIGN: STAHLBERGER | 2680 WOODLAWN DR. HONOLULU, HI 96822            |
| DRAWN: STAHLBERGER  | INSTRUMENT: SPEX - CROSS DISPERSED SPECTROGRAPH |
| APPR'D: J. RAYNER   | PART NAME: FLEX STAGE                           |
| <b>TOLERANCES</b>   |   |
| X.X                 | +/- .015  |
| X.XX                | +/- .005  |
| X.XXX               | +/- .002  |
| ANGLE               | +/- 30 min                                      |
| FRACTION            | +/- 1/32  |
| DRW NO: SN3-014B    | SCALE: 1:1                                      |
| SIZE: B             | JOS NO: 725                                     |
|                     | SHEET: 1 OF 1                                   |

|           |
|-----------|
| SN3-001B  |
| NEXT ASSY |

PLOT: 10/19/99