

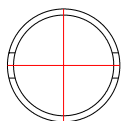
NOTES: UNLESS OTHERWISE NOTED

1. MACHINED SURFACE ROUGHNESS 64
- 0-RING GROOVES AND SURFACES 32
2. REMOVE ALL BURRS/SHARP CORNERS

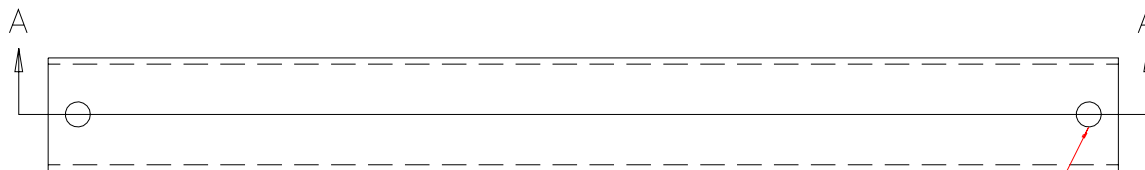
NOTE TO VENDOR:
THIS PART TO BE
DONE AT IFA

BILL OF MATERIAL

NO.	REQ'D	REF DRW	DESCRIPTION	MATERIAL
N/A	1	SN3-016A	G-10 TUBE	G-10

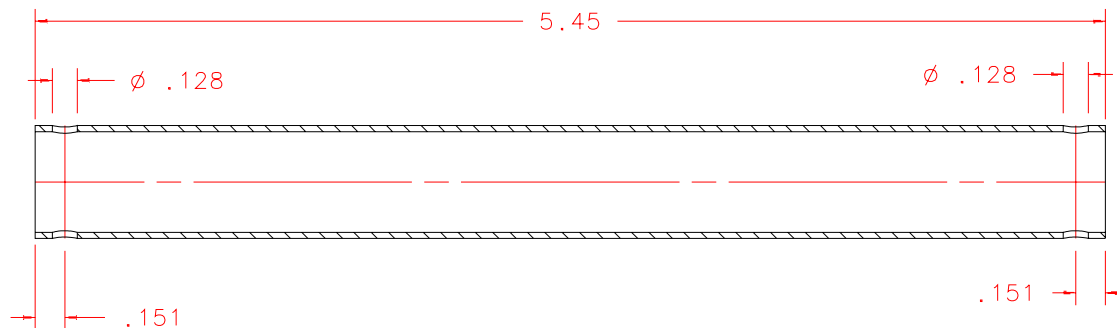


LEFT



FRONT

TRANSFER THESE
HOLES TO SN3-013A
AFTER IT HAS BEEN
GLUED IN PLACE.
2 PLACES



SECTION A-A

REVDATE: N/A	REVISION: N/A
DATE: 11/08/97	INSTITUTE FOR ASTRONOMY
DESIGN: STAHLBERGER	2680 WOODLAWN DR. HONOLULU, HI 96822
DRAWN: STAHLBERGER	INSTRUMENT: SPEX - CROSS DISPERSED SPECTROGRAPH
APPR'D: J. RAYNER	PART NAME: G-10 TUBE
TOLERANCES	
X.X	+/- .015
X.XX	+/- .005
X.XXX	+/- .002
ANGLE	+/- 30 min
FRACTION	+/- 1/32
TELESCOPE: IRTF	
DRW NO: SN3-016A	SCALE: 1:1
SIZE: A	JOS NO: 725
	SHEET: 1 OF 1

SN3-001B
NEXT ASSY

PLOT: 10/19/99