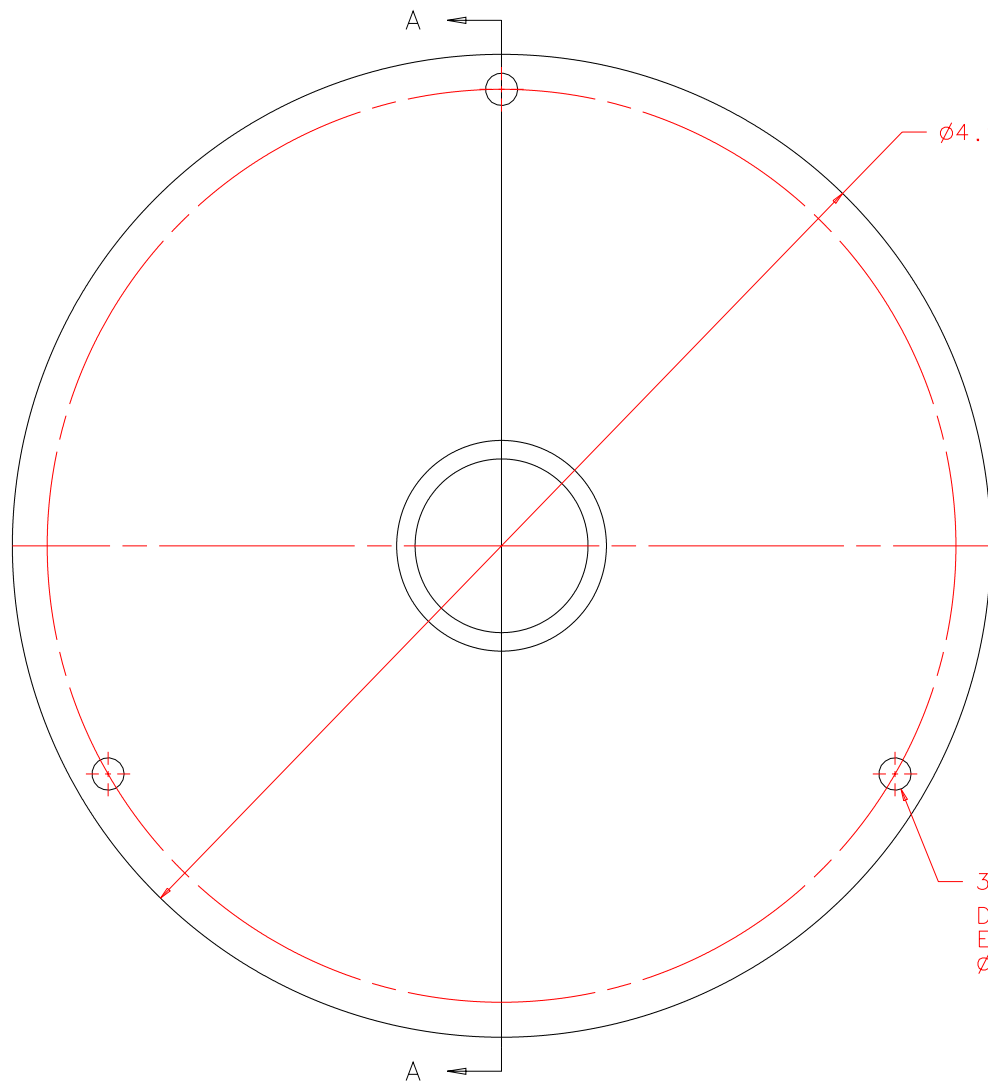


NOTES: UNLESS OTHERWISE NOTED

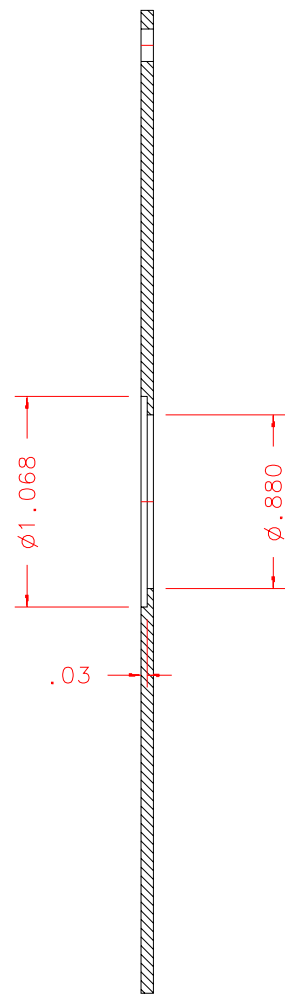
1. MACHINED SURFACE ROUGHNESS 64
O-RING GROOVES AND SURFACES 32
2. REMOVE ALL BURRS/SHARP CORNERS

BILL OF MATERIAL				
NO.	REQ'D	REF DRW	DESCRIPTION	MATERIAL
N/A	1	SN4-025A	TRIPLER RETICLE SUPPORT	ALU 6061-T6



$\phi 4.979^{+.000}_{-.005}$

3x $\phi .164^{+.005}_{-.000}$
DRILL THRU
EQ.SPCD
 $\phi 4.625$ BC



$\phi 1.068$
 $\phi .880$
.03
SECTION A-A

FRONT

REVDATE: N/A	REVISION: N/A
DATE: 09/20/99	INSTITUTE FOR ASTRONOMY
DESIGN: STAHLBERGER	2680 WOODLAWN DR. HONOLULU, HI 96822
DRAWN: STAHLBERGER	INSTRUMENT: SPEX - CROSS DISPERSED SPECTROGRAPH
APPR'D: J. RAYNER	PART NAME: TRIPLER RETICLE SUPPORT
TOLERANCES	
X.X	+/- .015
X.XX	+/- .005
X.XXX	+/- .002
ANGLE	+/- 30 min
FRACTION	+/- 1/32
TELESCOPE: IRTF	
DRW NO: SN4-025A	SCALE: 1:1
SIZE: A	JOS NO: 725
	SHEET: 1 OF 1

PLOT: 10/19/99

SN4-001B
NEXT ASSY