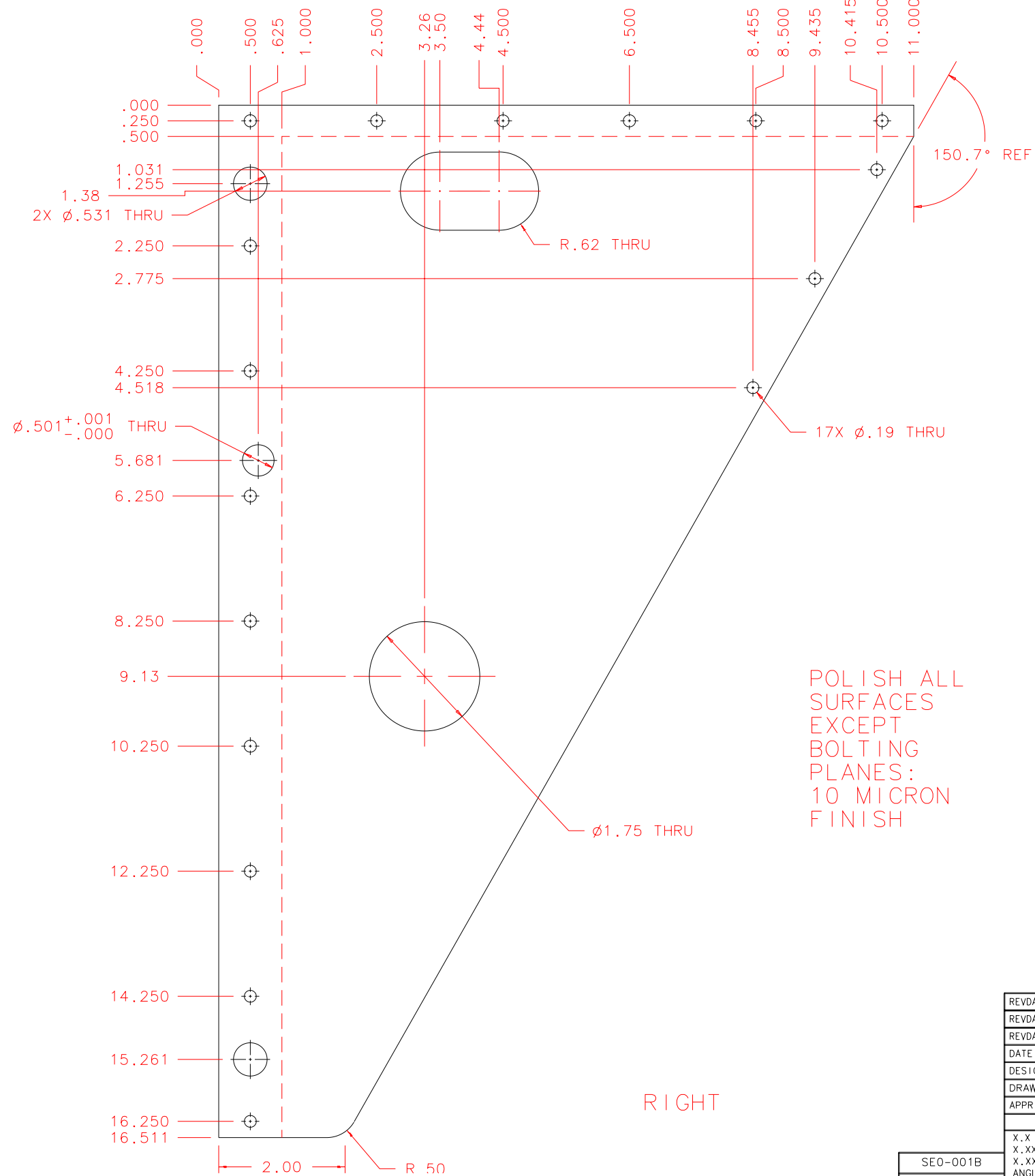


NOTES: UNLESS OTHERWISE NOTED  
 1. MACHINED SURFACE ROUGHNESS 64  
 O-RING GROOVES AND SURFACES 32  
 2. REMOVE ALL BURRS/SHARP CORNERS

| BILL OF MATERIAL |       |          |             |             |
|------------------|-------|----------|-------------|-------------|
| NO.              | REQ'D | REF DRW  | DESCRIPTION | MATERIAL    |
| N/A              | 1     | SEO-017B | GUSSET+X    | ALU 6061-T6 |

.125 .50



FRONT

RIGHT

|                     |   |
|---------------------|---|
| REVDATE: 12/30/97   | REVISION: ADD 1.75 THRU HOLE                    |
| REVDATE: 8/11/97    | REVISION: ADD .62 RAD SLOT                      |
| REVDATE: N/A        | REVISION: N/A                                   |
| DATE: 03/10/97      | <b>INSTITUTE FOR ASTRONOMY</b>                  |
| DESIGN: STAHLBERGER | 2680 WOODLAWN DR. HONOLULU, HI 96822            |
| DRAWN: STAHLBERGER  | INSTRUMENT: SPEX - CROSS DISPERSED SPECTROGRAPH |
| APPR'D: J. RAYNER   | PART NAME: GUSSET+X                             |
| <b>TOLERANCES</b>   |   |
| X.X                 | +/- .015  |
| X.XX                | +/- .005  |
| X.XXX               | +/- .002  |
| ANGLE               | +/- 30 min                                      |
| FRACTION            | +/- 1/32  |
| DRW NO: SEO-017B    | SCALE: 1:2                                      |
| SIZE: B             | JOS NO: 725                                     |
|                     | SHEET: 1 OF 1                                   |

PLOT: 10/19/99

|           |
|-----------|
| SEO-001B  |
| NEXT ASSY |