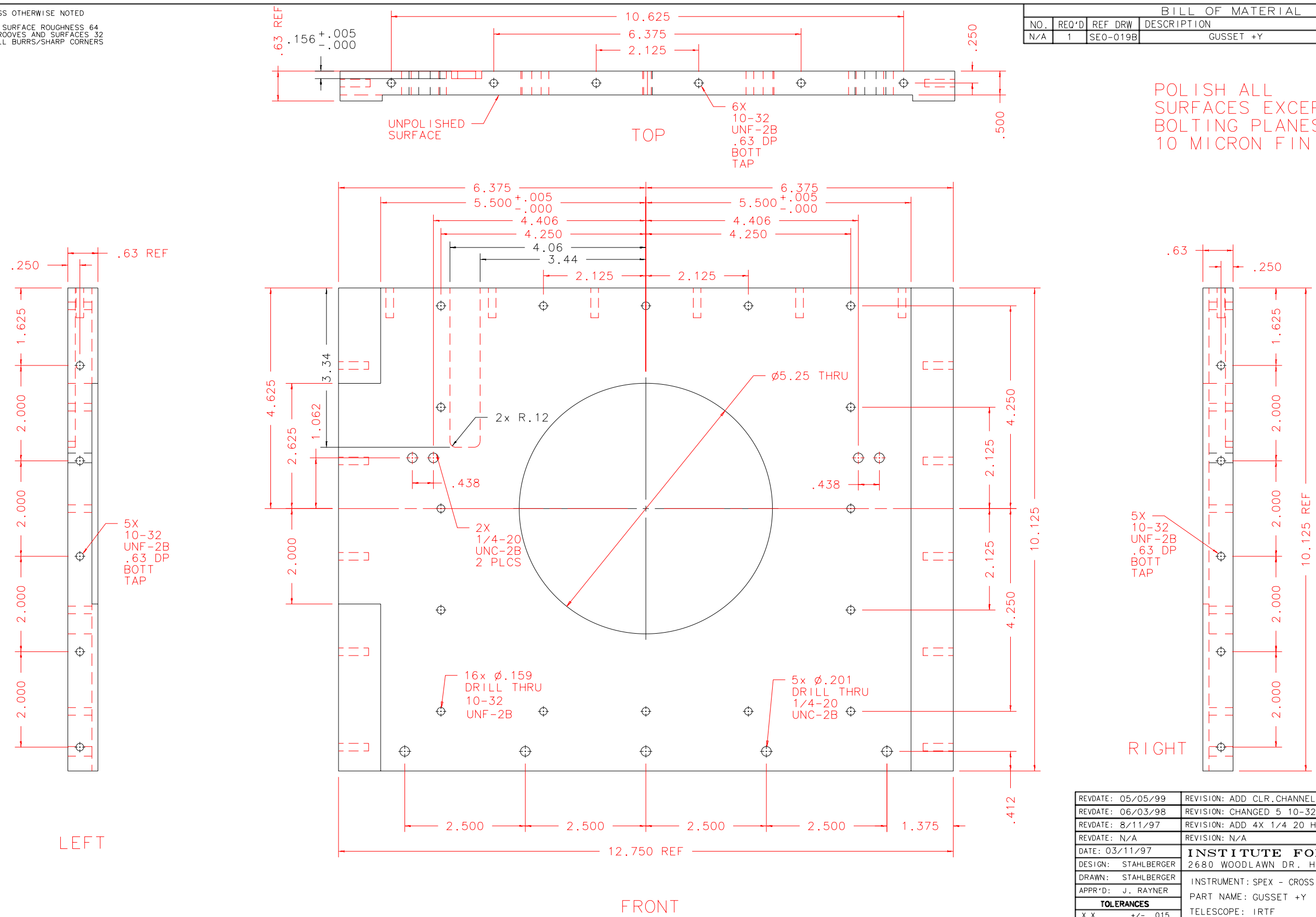


NOTES: UNLESS OTHERWISE NOTED
 1. MACHINED SURFACE ROUGHNESS 64
 O-RING GROOVES AND SURFACES 32
 2. REMOVE ALL BURRS/SHARP CORNERS

BILL OF MATERIAL				
NO.	REQ'D	REF DRW	DESCRIPTION	MATERIAL
N/A	1	SEO-019B	GUSSET +Y	ALU 6061-T6

POLISH ALL SURFACES EXCEPT BOLTING PLANES: 10 MICRON FINISH



PLOT: 10/19/99

SEO-001B	
NEXT ASSY	

REVDATE: 05/05/99	REVISION: ADD CLR.CHANNEL
REVDATE: 06/03/98	REVISION: CHANGED 5 10-32 TO 1/4-20
REVDATE: 8/11/97	REVISION: ADD 4X 1/4 20 HOLES
REVDATE: N/A	REVISION: N/A
DATE: 03/11/97	INSTITUTE FOR ASTRONOMY
DESIGN: STAHLBERGER	2680 WOODLAWN DR. HONOLULU, HI 96822
DRAWN: STAHLBERGER	INSTRUMENT: SPEX - CROSS DISPERSED SPECTROGRAPH
APPR'D: J. RAYNER	PART NAME: GUSSET +Y
TOLERANCES	TELESCOPE: IRTF
X.X +/- .015	
X.XX +/- .005	
X.XXX +/- .002	
ANGLE +/- 30 min	
FRACTION +/- 1/32	
DRW NO: SEO-019B	SCALE: 1:2
SIZE: B	JOS NO: 725
	SHEET: 1 OF 1