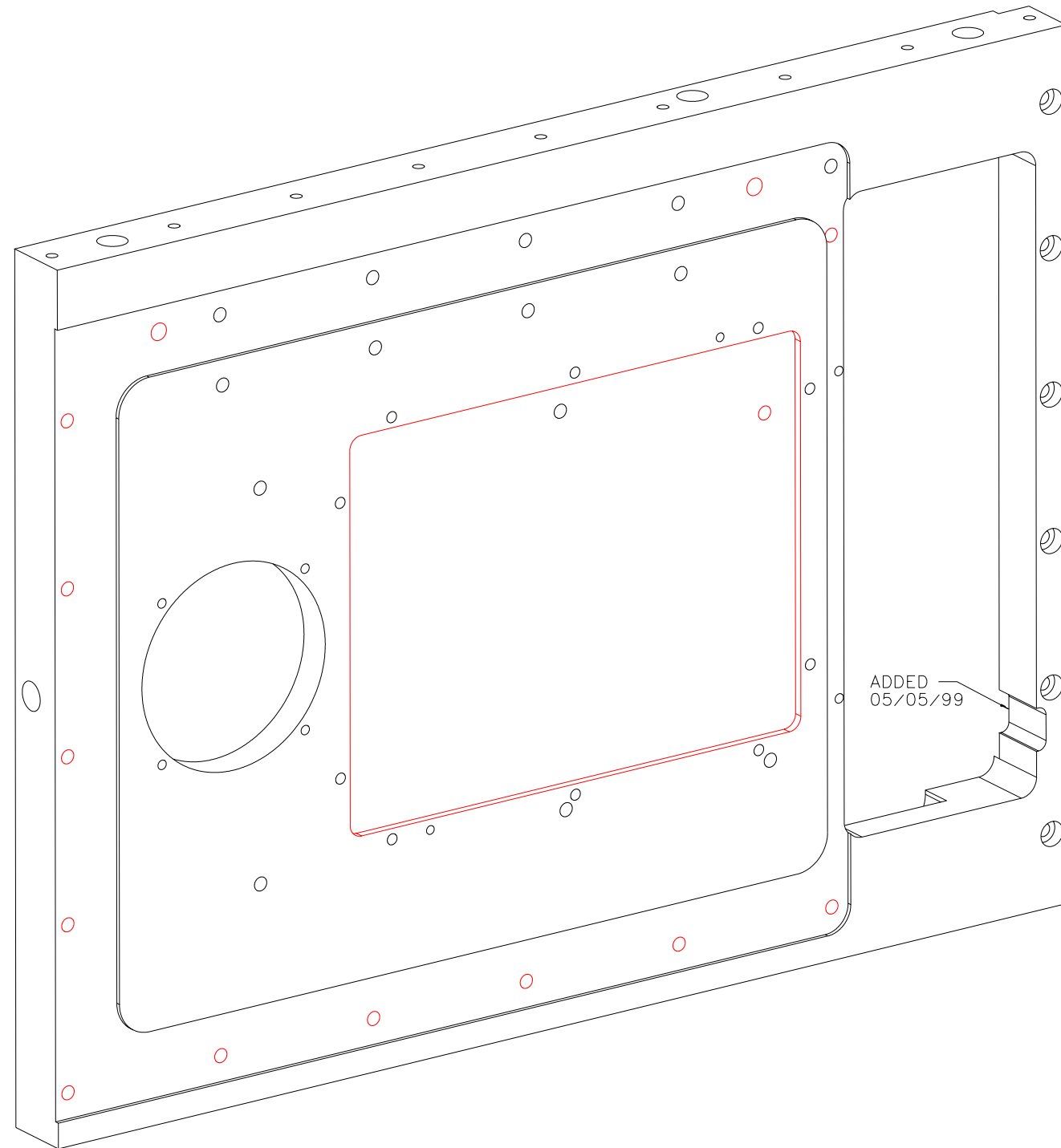
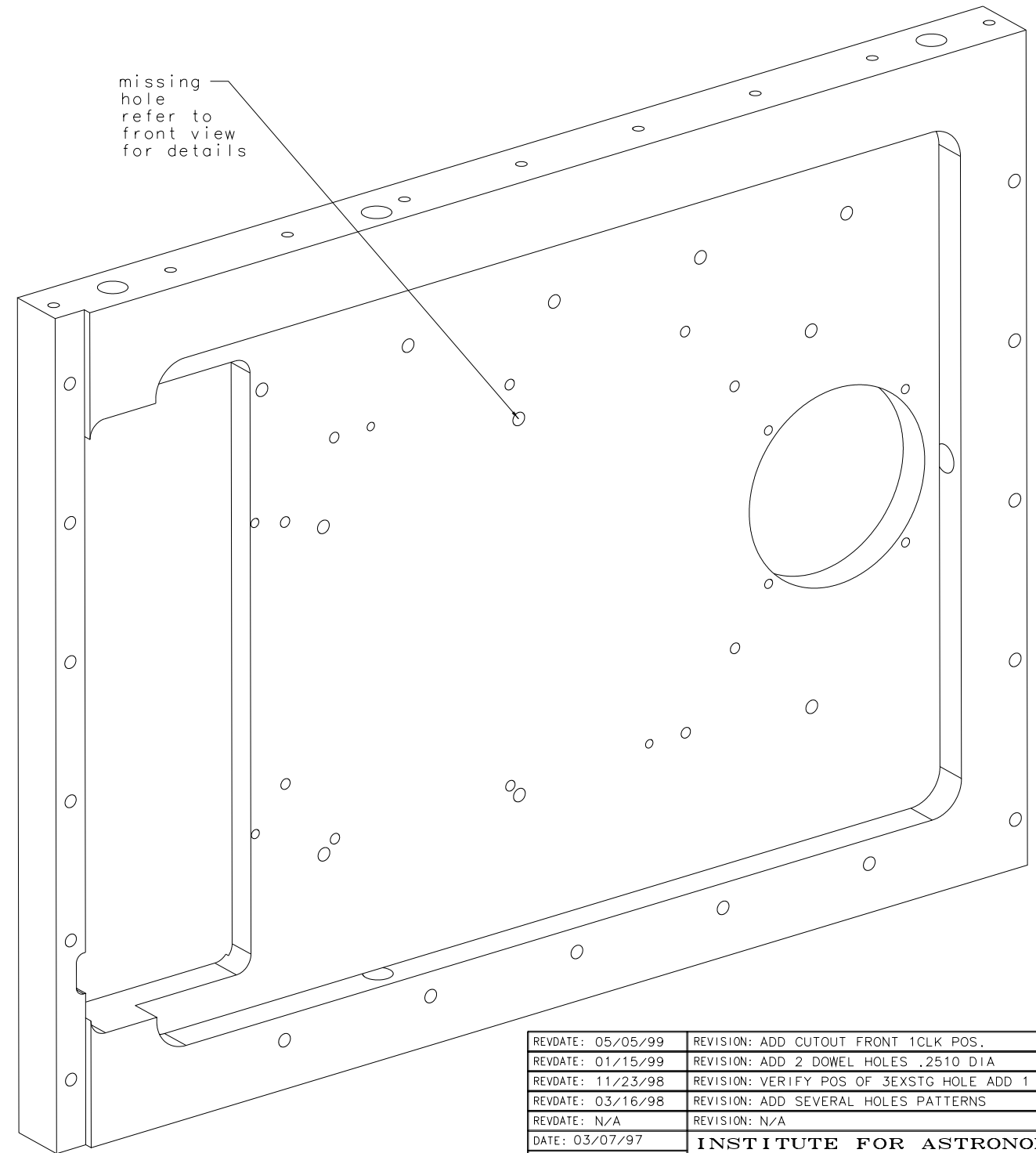


NOTES: UNLESS OTHERWISE NOTED
 1. MACHINED SURFACE ROUGHNESS 64
 O-RING GROOVES AND SURFACES 32
 2. REMOVE ALL BURRS/SHARP CORNERS

BILL OF MATERIAL				
NO.	REQ'D	REF DRW	DESCRIPTION	MATERIAL
N/A	1	SEO-021B	TRUSS MOUNT	ALU 6061-T6



ISOMETRIC 1



ISOMETRIC 2

REVDATE: 05/05/99	REVISION: ADD CUTOUT FRONT 1CLK POS.
REVDATE: 01/15/99	REVISION: ADD 2 DOWEL HOLES .2510 DIA
REVDATE: 11/23/98	REVISION: VERIFY POS OF 3EXSTG HOLE ADD 1
REVDATE: 03/16/98	REVISION: ADD SEVERAL HOLES PATTERNS
REVDATE: N/A	REVISION: N/A
DATE: 03/07/97	INSTITUTE FOR ASTRONOMY
DESIGN: STAHLBERGER	2680 WOODLAWN DR. HONOLULU, HI 96822
DRAWN: STAHLBERGER	INSTRUMENT: SPEX - CROSS DISPERSED SPECTROGRAPH
APPR'D: J. RAYNER	PART NAME: TRUSS MOUNT
TOLERANCES	
X.X	+/- .015
X.XX	+/- .005
X.XXX	+/- .002
ANGLE	+/- 30 min
FRACTION	+/- 1/32
DRW NO: SEO-021B	SCALE: 1:2
SIZE: B	JOS NO: 725
	SHEET: 4 OF 4

SEO-001B	
NEXT ASSY	

PLOT: 10/19/99