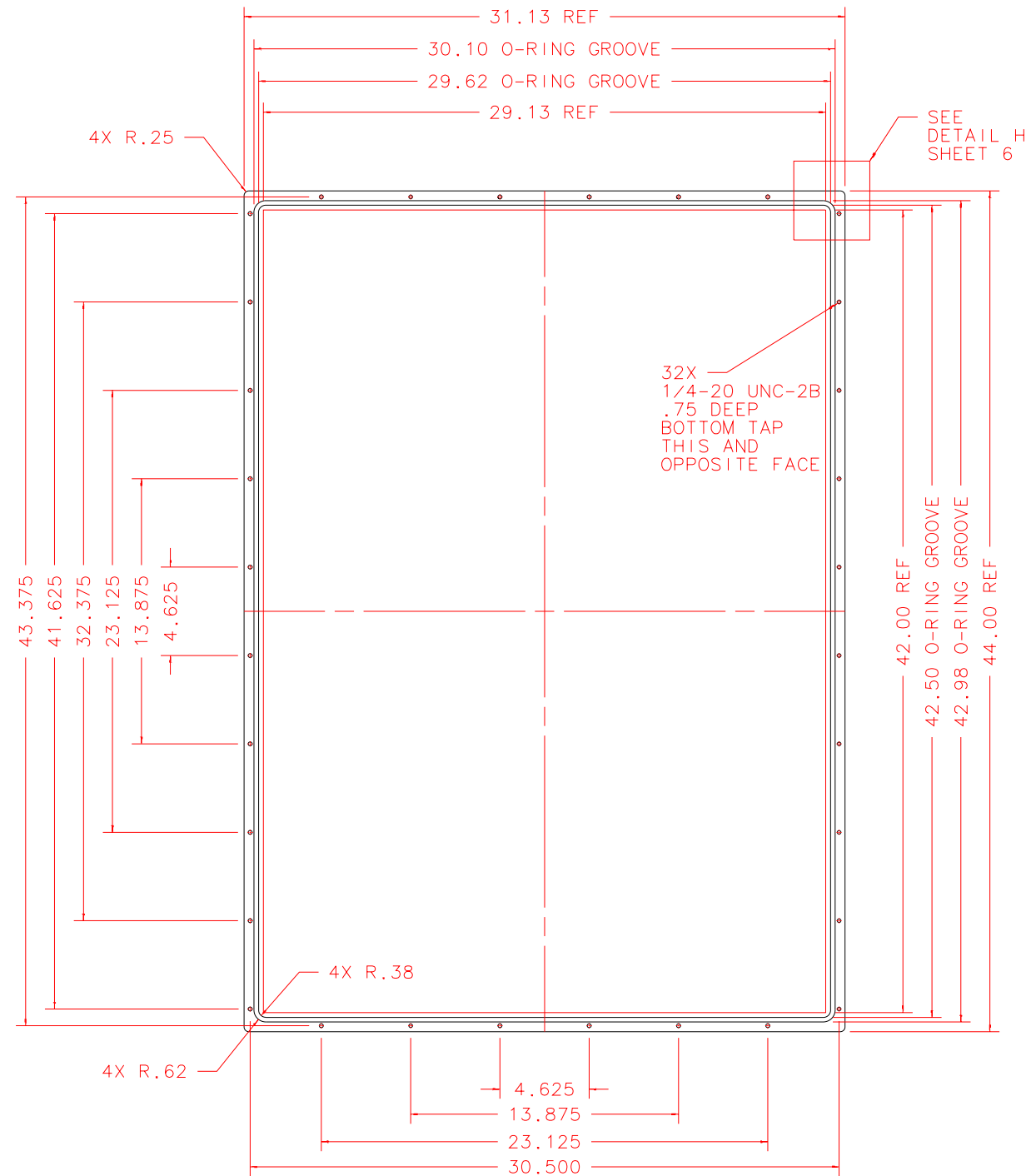


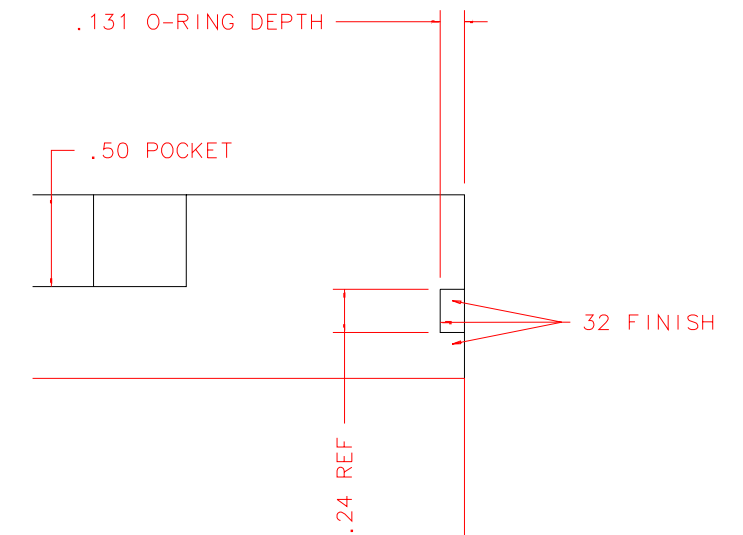
NOTES: UNLESS OTHERWISE NOTED
 1. MACHINED SURFACE ROUGHNESS 64
 O-RING GROOVES AND SURFACES 32
 2. REMOVE ALL BURRS/SHARP CORNERS

| BILL OF MATERIAL | | | | |
|------------------|-------|----------|----------------|----------|
| NO. | REQ'D | REF DRW | DESCRIPTION | MATERIAL |
| N/A | 1 | SB3-011B | CENTER SECTION | ALU 2219 |



FRONT VIEW

GENERAL NOTE ON O-RING SURFACES
 A) LEAVE NO VISIBLE TOOL MARKS
 B) USE SPOT FACE METHOD FOR CIRCULAR O-RINGS
 C) USE ONLY 600 GRIT PAPER FOR CLEANUP



DETAIL C
 SECTION THRU
 O-RING GROOVE
 SCALE 1:1
 TYPICAL
 2 PLCS

| | |
|---------------------|---|
| REVDATE: 08/03/99 | REVISION: DET C: DIM 10.27 SQR WAS 10.00 SQR |
| REVDATE: N/A | REVISION: N/A |
| DATE: 12/26/96 | INSTITUTE FOR ASTRONOMY |
| DESIGN: STAHLBERGER | 2680 WOODLAWN DR. HONOLULU, HI 96822 |
| DRAWN: STAHLBERGER | INSTRUMENT: SPEX - CROSS DISPERSED SPECTROGRAPH |
| APPR'D: J. RAYNER | PART NAME: CENTER SECTION |
| TOLERANCES | |
| X.X | +/- .015 |
| X.XX | +/- .005 |
| X.XXX | +/- .002 |
| ANGLE | +/- 30 min |
| FRACTION | +/- 1/32 |
| DRW NO: SB3-011B | SCALE: 1:4 |
| SIZE: B | JOS NO: 762 |
| SHEET: 1 OF 6 | |

| | |
|----------|-----------|
| SB0-001B | NEXT ASSY |
|----------|-----------|

PLOT: 10/19/99