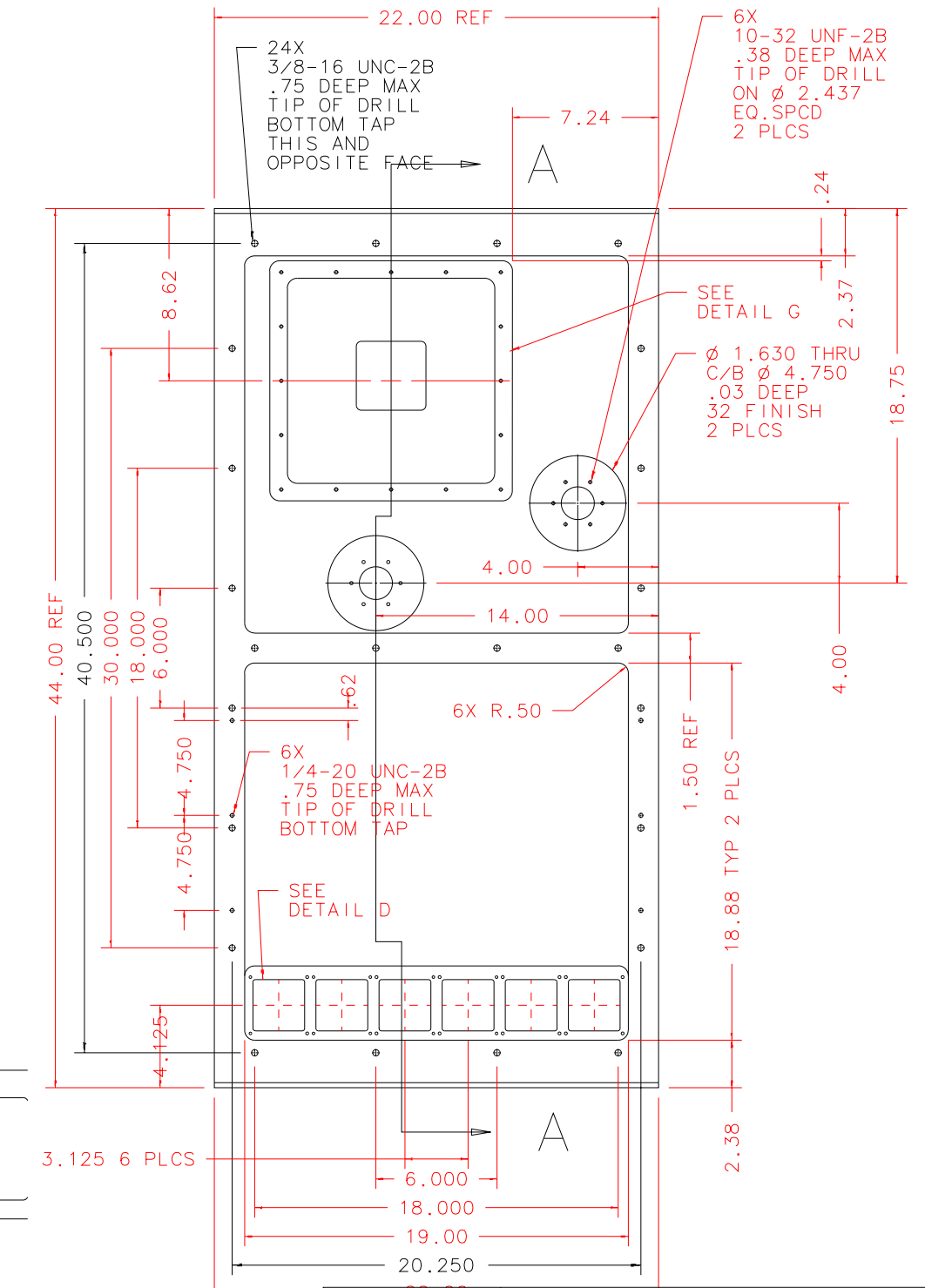
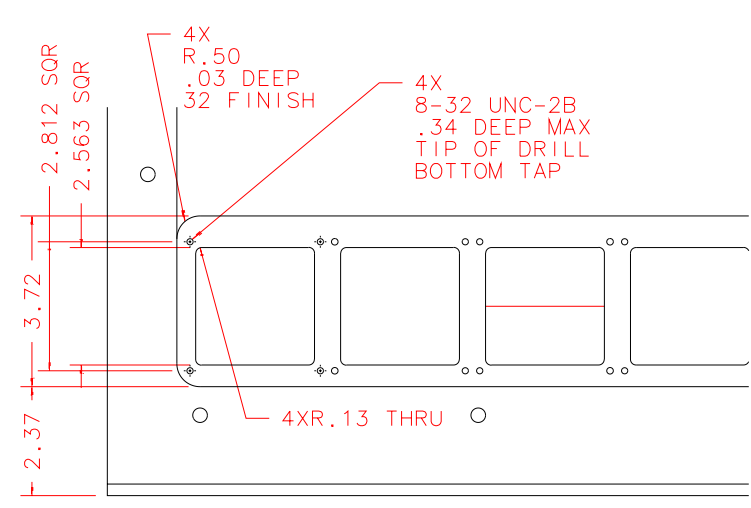
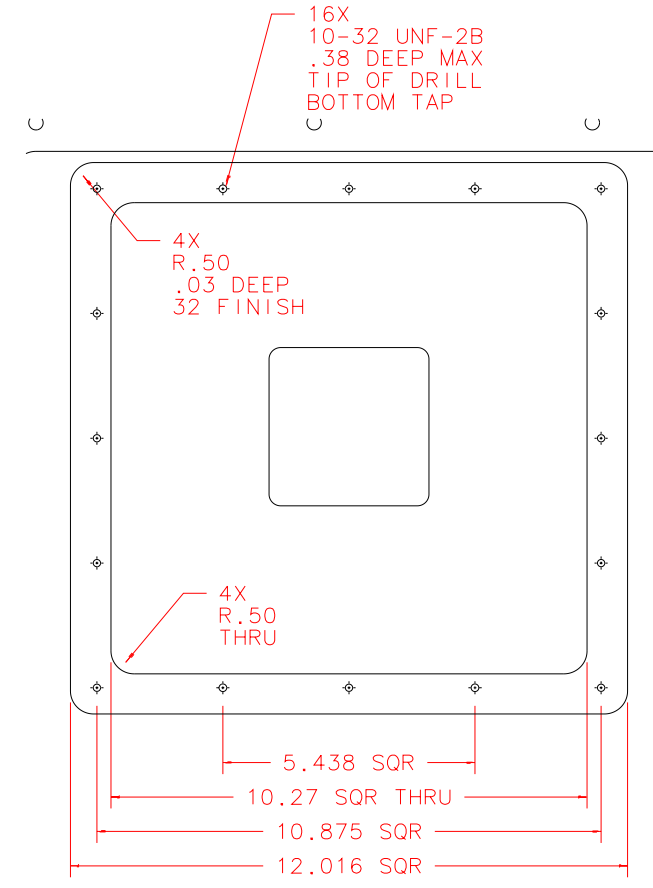
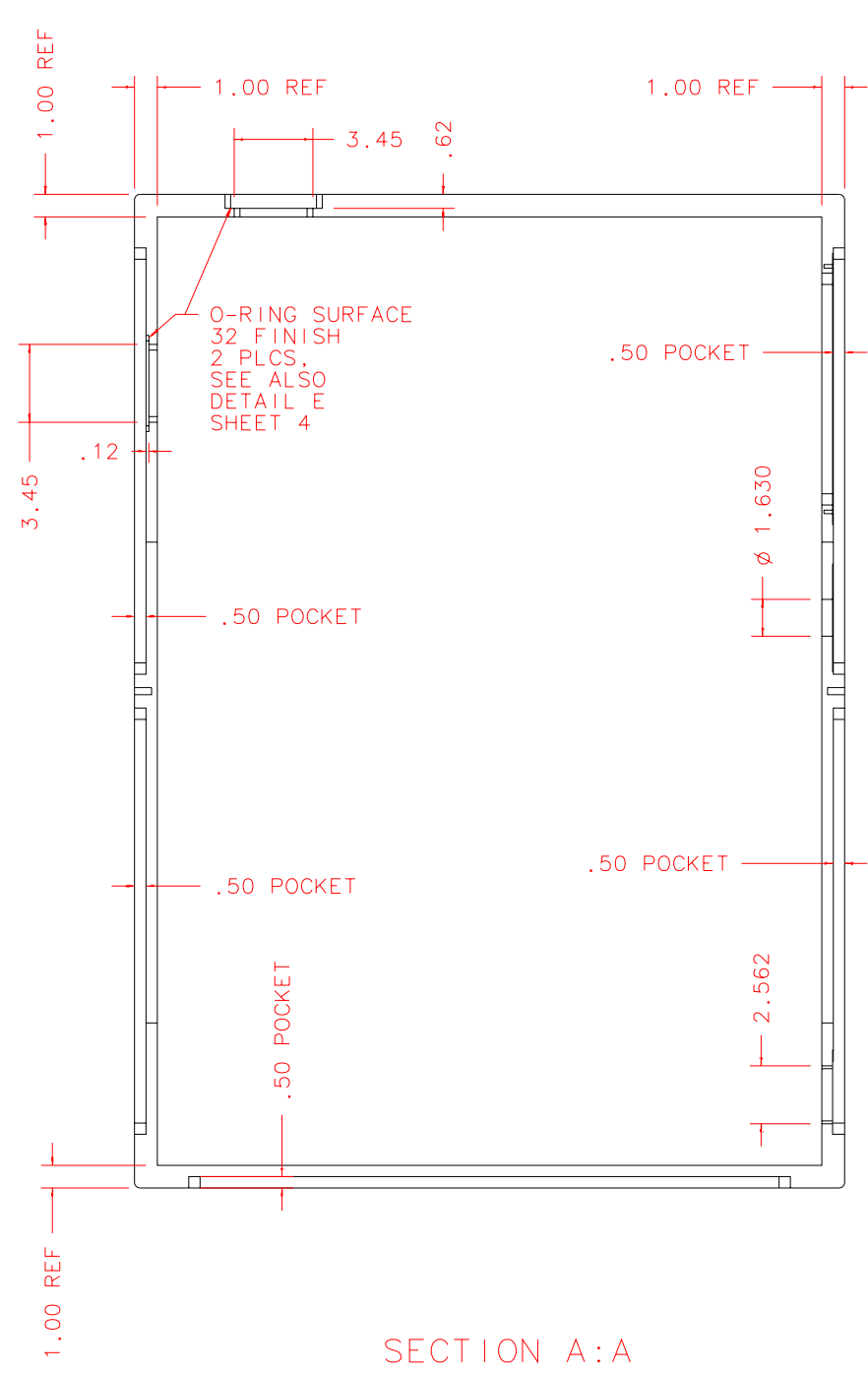


NOTES: UNLESS OTHERWISE NOTED  
 1. MACHINED SURFACE ROUGHNESS 64  
 O-RING GROOVES AND SURFACES 32  
 2. REMOVE ALL BURRS/SHARP CORNERS

BILL OF MATERIAL				
NO.	REQ'D	REF DRW	DESCRIPTION	MATERIAL
N/A	1	SB3-011B	CENTER SECTION	ALU 2219



GENERAL NOTE ON O-RING SURFACES  
 A) LEAVE NO VISIBLE TOOL MARKS  
 B) USE SPOT FACE METHOD FOR CIRCULAR O-RINGS  
 C) USE ONLY 600 GRIT PAPER FOR CLEANUP

REVDATE: 08/03/99	REVISION: DET C: DIM 10.27 SQR WAS 10.00 SQR
REVDATE: N/A	REVISION: N/A
DATE: 12/26/96	<b>INSTITUTE FOR ASTRONOMY</b>
DESIGN: STAHLBERGER	2680 WOODLAWN DR. HONOLULU, HI 96822
DRAWN: STAHLBERGER	INSTRUMENT: SPEX - CROSS DISPERSED SPECTROGRAPH
APPR'D: J. RAYNER	PART NAME: CENTER SECTION
<b>TOLERANCES</b>	
X.X	+/- .015
X.XX	+/- .005
X.XXX	+/- .002
ANGLE	+/- 30 min
FRACTION	+/- 1/32
SB0-001B	DRW NO: SB3-011B
NEXT ASSY	SCALE: 1:4
	SIZE: B
	JOS NO: 762
	SHEET: 2 OF 6