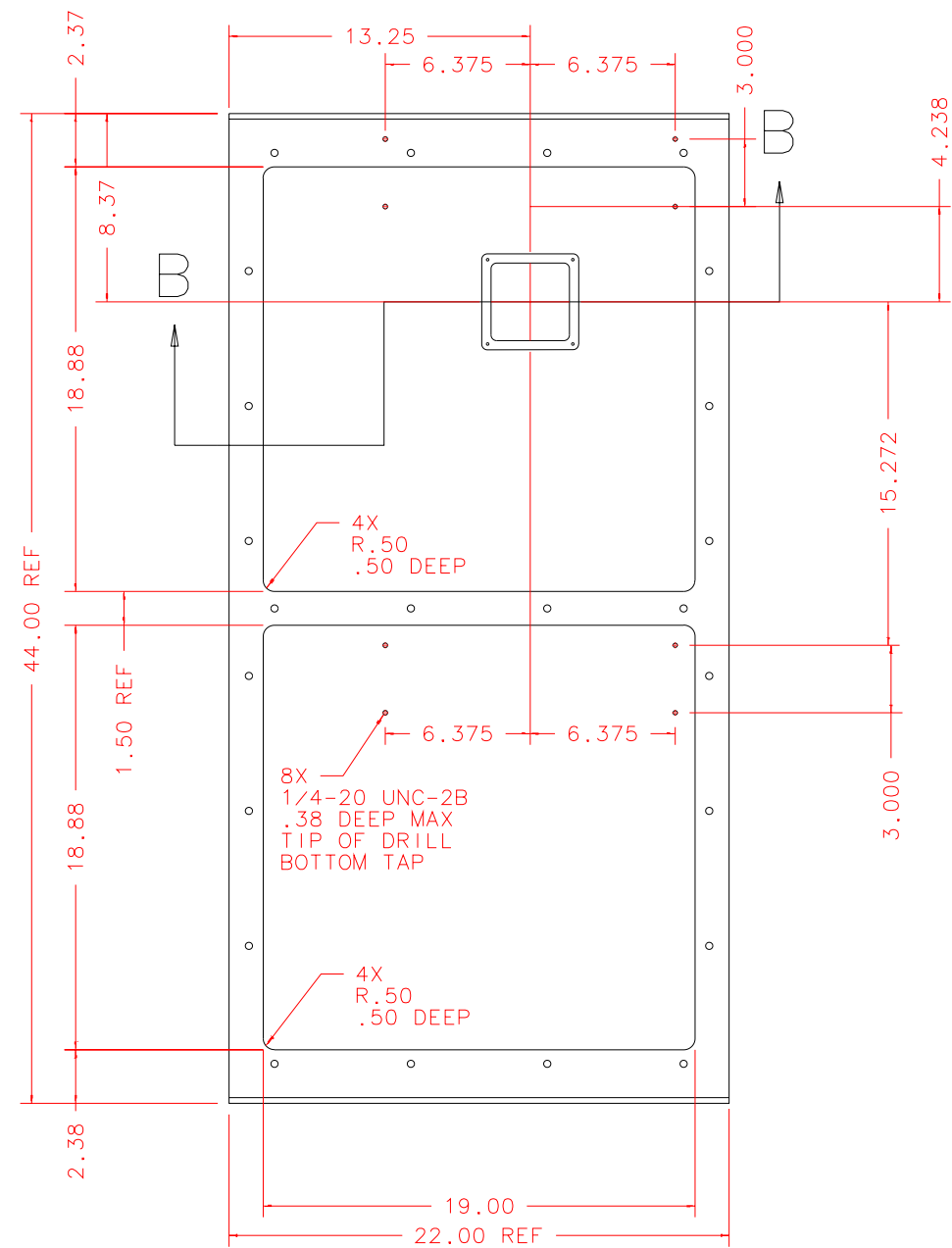
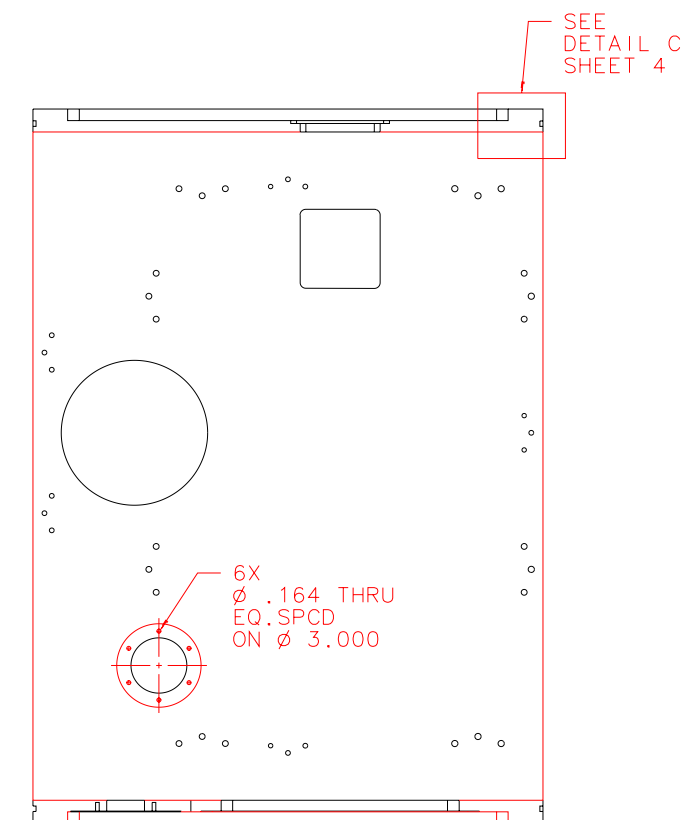


NOTES: UNLESS OTHERWISE NOTED
 1. MACHINED SURFACE ROUGHNESS 64
 O-RING GROOVES AND SURFACES 32
 2. REMOVE ALL BURRS/SHARP CORNERS

BILL OF MATERIAL				
NO.	REQ'D	REF DRW	DESCRIPTION	MATERIAL
N/A	1	SB3-011B	CENTER SECTION	ALU 2219



RIGHT



SECTION B:B

GENERAL NOTE ON O-RING SURFACES
 A) LEAVE NO VISIBLE TOOL MARKS
 B) USE SPOT FACE METHOD FOR CIRCULAR O-RINGS
 C) USE ONLY 600 GRIT PAPER FOR CLEANUP

PLOT: 10/19/99

SB0-001B	NEXT ASSY
----------	-----------

REVDATE: 08/03/99	REVISION: DET C: DIM 10.27 SQR WAS 10.00 SQR
DATE: 12/26/96	REVISION: N/A
DESIGN: STAHLBERGER	INSTITUTE FOR ASTRONOMY
DRAWN: STAHLBERGER	2680 WOODLAWN DR. HONOLULU, HI 96822
APPR'D: J. RAYNER	INSTRUMENT: SPEX - CROSS DISPERSED SPECTROGRAPH
TOLERANCES	PART NAME: CENTER SECTION
X.X +/- .015	TELESCOPE: IRTF
X.XX +/- .005	
X.XXX +/- .002	
ANGLE +/- 30 min	
FRACTION +/- 1/32	
DRW NO: SB3-011B	SCALE: 1:4
SIZE: B	JOS NO: 762
	SHEET: 3 OF 6