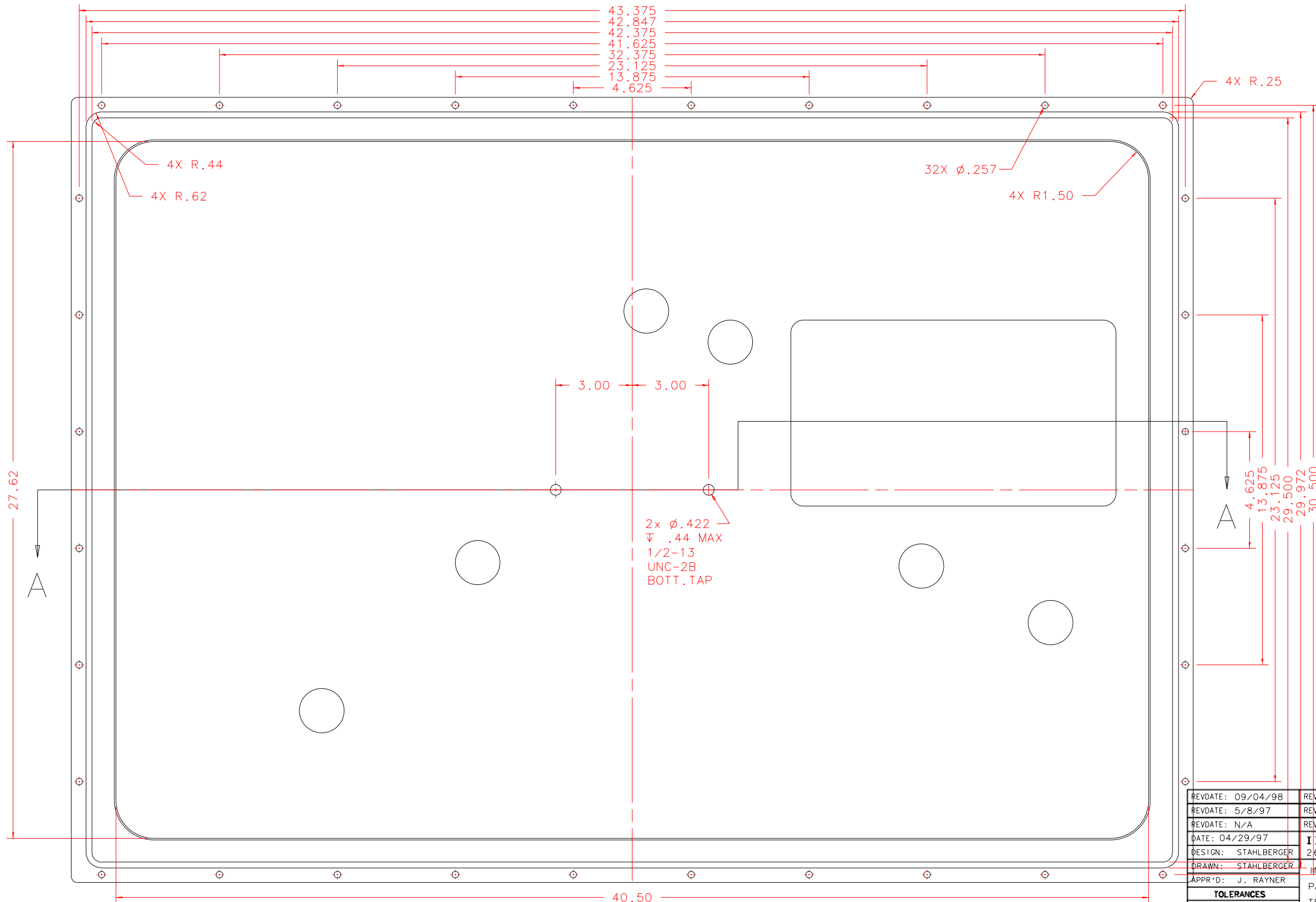
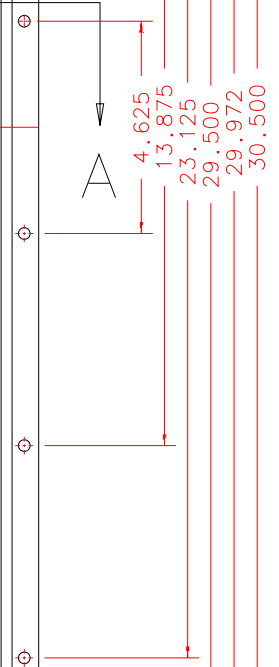


NOTES: UNLESS OTHERWISE NOTED  
 1. MACHINED SURFACE ROUGHNESS 64  
 O-RING GROOVES AND SURFACES 32  
 2. REMOVE ALL BURRS/SHARP CORNERS

BILL OF MATERIAL				
NO.	REQ'D	REF DRW	DESCRIPTION	MATERIAL
N/A	1	SB3-016B	MOTOR COVER PLATE	ALU 6061-T6



2x  $\phi$ .422  
 $\nabla$  .44 MAX  
 1/2-13  
 UNC-2B  
 BOTT. TAP



FRONT: SCALE 1:4

REVD: 09/04/98	REVISION: ADDED MOTOR HOLE AND ACCESS PORT CO
REVD: 5/8/97	REVISION: MOVED 1/2-13 HOLE
REVD: N/A	REVISION: N/A
DATE: 04/29/97	<b>INSTITUTE FOR ASTRONOMY</b>
DESIGN: STAHLBERGER	2680 WOODLAWN DR. HONOLULU, HI 96822
DRAWN: STAHLBERGER	INSTRUMENT: SPEX - CROSS DISPERSED SPECTROGRAPH
APPR'D: J. RAYNER	PART NAME: MOTOR COVER PLATE
	TELESCOPE: IRTF

TOLERANCES	
X.X	+/- .015
X.XX	+/- .005
X.XXX	+/- .002
ANGLE	+/- 30 min
FRACTION	+/- 1/32

SB0-001B	
NEXT ASSY	

DRW NO: SB3-016B	SCALE: NOTED
SIZE: B	JOS NO: 725
	SHEET: 1 OF 4

PLOT: 10/19/99