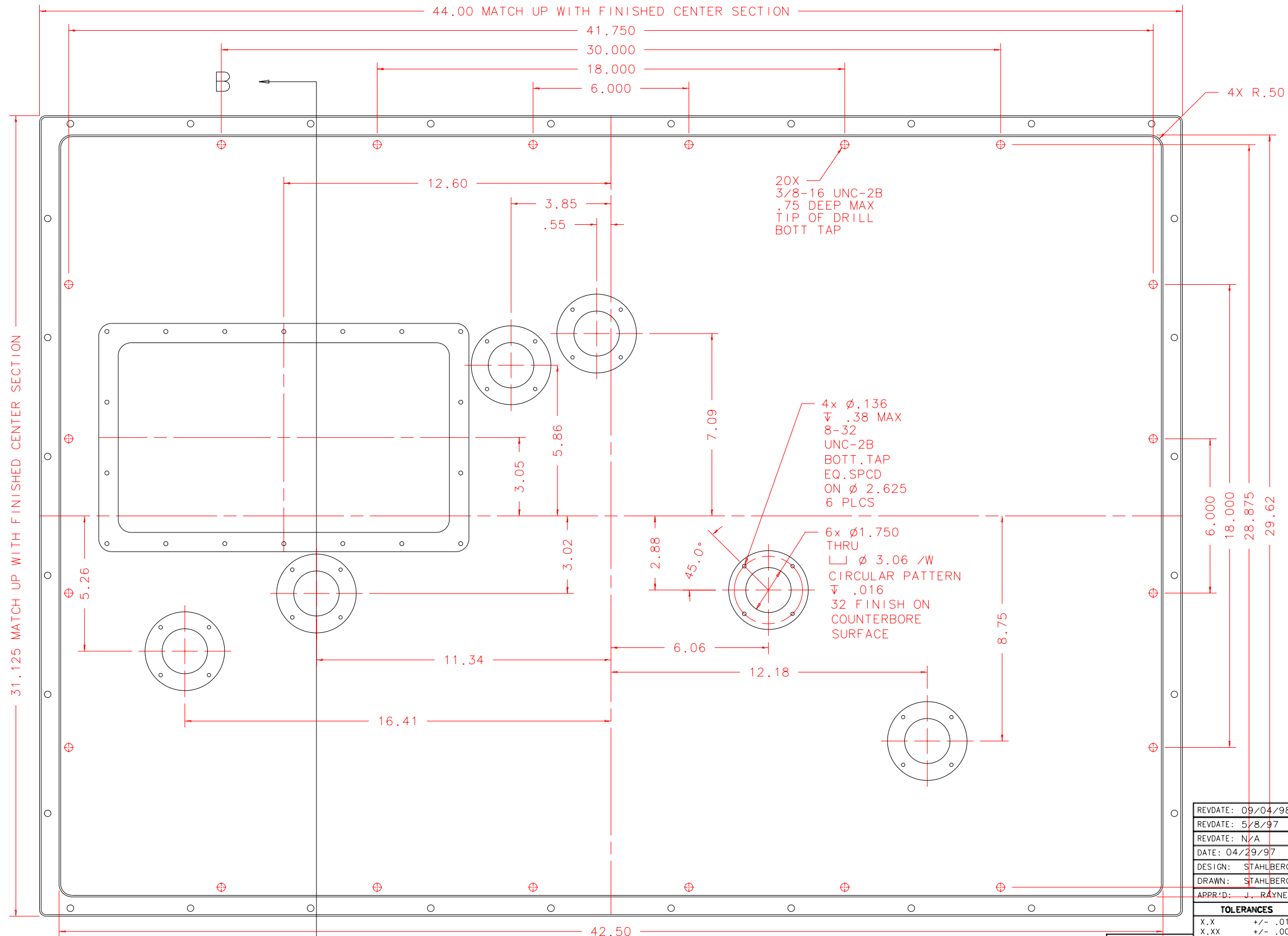


NOTES: UNLESS OTHERWISE NOTED
 1. MACHINED SURFACE ROUGHNESS 64
 O-RING GROOVES AND SURFACES 32
 2. REMOVE ALL BURRS/SHARP CORNERS

BILL OF MATERIAL				
NO.	REQ'D	REF DRW	DESCRIPTION	MATERIAL
N/A	1	SB3-016B	MOTOR COVER PLATE	ALU 6061-T6



PLOT: 10/19/99

B

BACK: SCALE 1:4

SB0-001B
NEXT ASSY

REVD: 09/04/98	REVISION: ADDED MOTOR HOLE AND ACCESS PORT CO
REVD: 5/8/97	REVISION: MOVED 1/2-13 HOLE
REVD: N/A	REVISION: N/A
DATE: 04/29/97	INSTITUTE FOR ASTRONOMY
DESIGN: STAHLBERGER	2680 WOODLAWN DR. HONOLULU, HI 96822
DRAWN: STAHLBERGER	INSTRUMENT: SPEX - CROSS DISPERSED SPECTROGRAPH
APPR'D: J. RAYNER	PART NAME: MOTOR COVER PLATE
TOLERANCES	TELESCOPE: IRTF
X.X +/- .015	
X.XX +/- .005	
X.XXX +/- .002	
ANGLE +/- 30 min	
FRACTION +/- 1/32	
DRW NO: SB3-016B	SCALE: NOTED
SIZE: B	JOS NO: 725
	SHEET: 2 OF 4