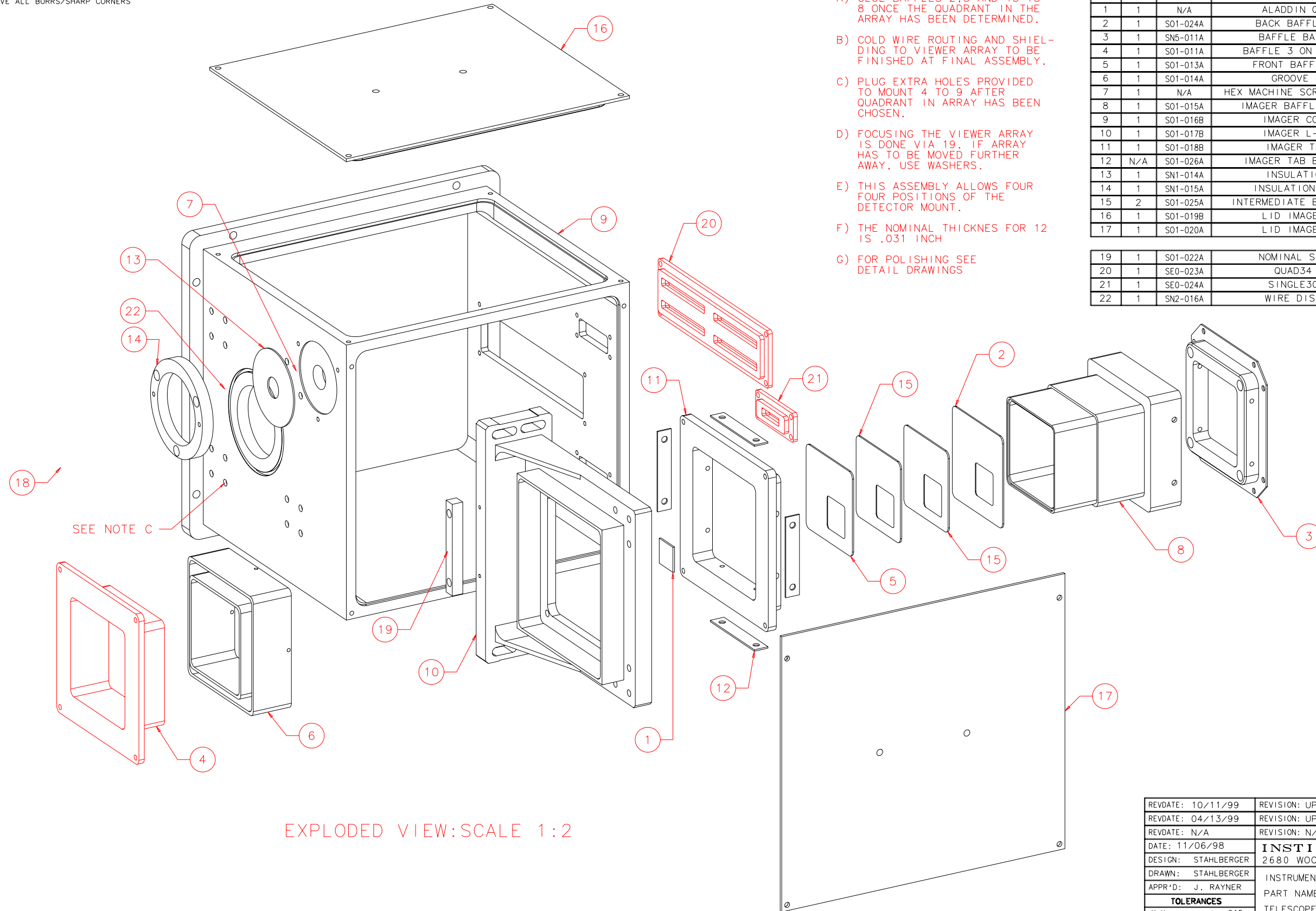


NOTES: UNLESS OTHERWISE NOTED  
 1. MACHINED SURFACE ROUGHNESS 64  
 O-RING GROOVES AND SURFACES 32  
 2. REMOVE ALL BURRS/SHARP CORNERS



EXPLODED VIEW: SCALE 1:2

NOTES:

- A) GLUE BAFFLES 2, 5 AND 15 TO 8 ONCE THE QUADRANT IN THE ARRAY HAS BEEN DETERMINED.
- B) COLD WIRE ROUTING AND SHIELDING TO VIEWER ARRAY TO BE FINISHED AT FINAL ASSEMBLY.
- C) PLUG EXTRA HOLES PROVIDED TO MOUNT 4 TO 9 AFTER QUADRANT IN ARRAY HAS BEEN CHOSEN.
- D) FOCUSING THE VIEWER ARRAY IS DONE VIA 19. IF ARRAY HAS TO BE MOVED FURTHER AWAY, USE WASHERS.
- E) THIS ASSEMBLY ALLOWS FOUR FOUR POSITIONS OF THE DETECTOR MOUNT.
- F) THE NOMINAL THICKNESS FOR 12 IS .031 INCH
- G) FOR POLISHING SEE DETAIL DRAWINGS

BILL OF MATERIAL

NO.	REQ'D	REF DRW	DESCRIPTION	MATERIAL
N/A	1	S01-001B	ALADDIN IMAGER	N/A
1	1	N/A	ALADDIN QUADRANT	N/A
2	1	S01-024A	BACK BAFFLE IMAGER	ALU 6061-T6
3	1	SN5-011A	BAFFLE BASE PLATE	ALU 6061-T6
4	1	S01-011A	BAFFLE 3 ON IMAGER BOX	ALU 6061-T6
5	1	S01-013A	FRONT BAFFLE IMAGER	ALU 6061-T6
6	1	S01-014A	GROOVE BAFFLE	ALU 6061-T6
7	1	N/A	HEX MACHINE SCREW NUT 1/4-20	STAINLESS
8	1	S01-015A	IMAGER BAFFLE TUBE WIDE	ALU 6061-T6
9	1	S01-016B	IMAGER COVER BOX	ALU 6061-T6
10	1	S01-017B	IMAGER L-BRACKET	ALU 6061-T6
11	1	S01-018B	IMAGER TAB BASE	ALU 6061-T6
12	N/A	S01-026A	IMAGER TAB BASE SPACER	ALU/BRASS
13	1	SN1-014A	INSULATION DISK	G-10
14	1	SN1-015A	INSULATION RETAINER	ALU 6061-T6
15	2	S01-025A	INTERMEDIATE BAFFLE IMAGER	ALU 6061-T6
16	1	S01-019B	LID IMAGE BOX -X	ALU 6061-T6
17	1	S01-020A	LID IMAGE BOX -Y	ALU 6061-T6
19	1	S01-022A	NOMINAL SHIM .300	ALU 6061-T6
20	1	SE0-023A	QUAD34 MOUNT	ALU 6061-T6
21	1	SE0-024A	SINGLE30 MOUNT	ALU 6061-T6
22	1	SN2-016A	WIRE DISCONNECT	COPPER OFHC

REVDATE: 10/11/99	REVISION: UPDATE DRAWING (FOCUS CHANGES)
REVDATE: 04/13/99	REVISION: UPDATE DRAWING
REVDATE: N/A	REVISION: N/A
DATE: 11/06/98	<b>INSTITUTE FOR ASTRONOMY</b>
DESIGN: STAHLBERGER	2680 WOODLAWN DR. HONOLULU, HI 96822
DRAWN: STAHLBERGER	INSTRUMENT: SPEX - CROSS DISPERSED SPECTROGRAPH
APPR'D: J. RAYNER	PART NAME: ALADDIN IMAGER
<b>TOLERANCES</b>	
X.X	+/- .015
X.XX	+/- .005
X.XXX	+/- .002
ANGLE	+/- 30 min
FRACTION	+/- 1/32
DRW NO: S01-001B	SCALE: NOTED
SIZE: B	JOS NO: 725
	SHEET: 1 OF 2