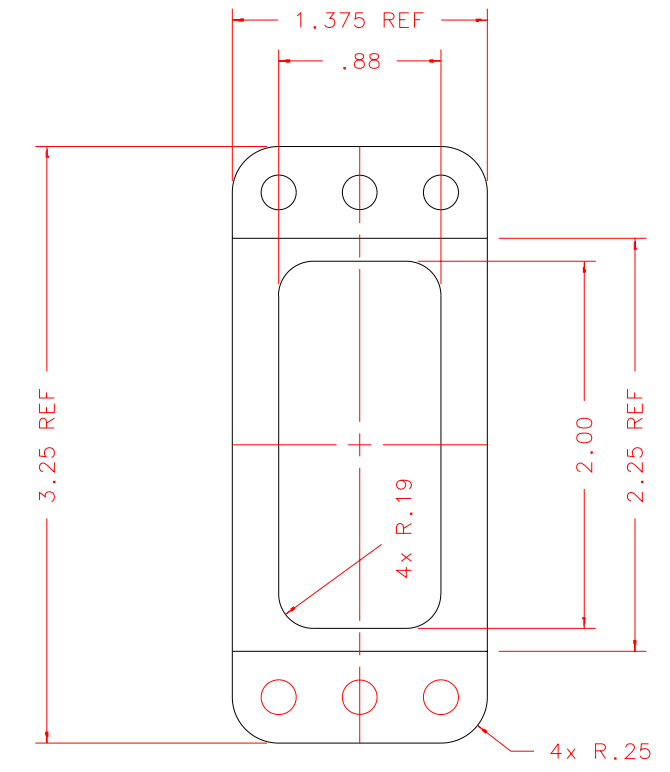
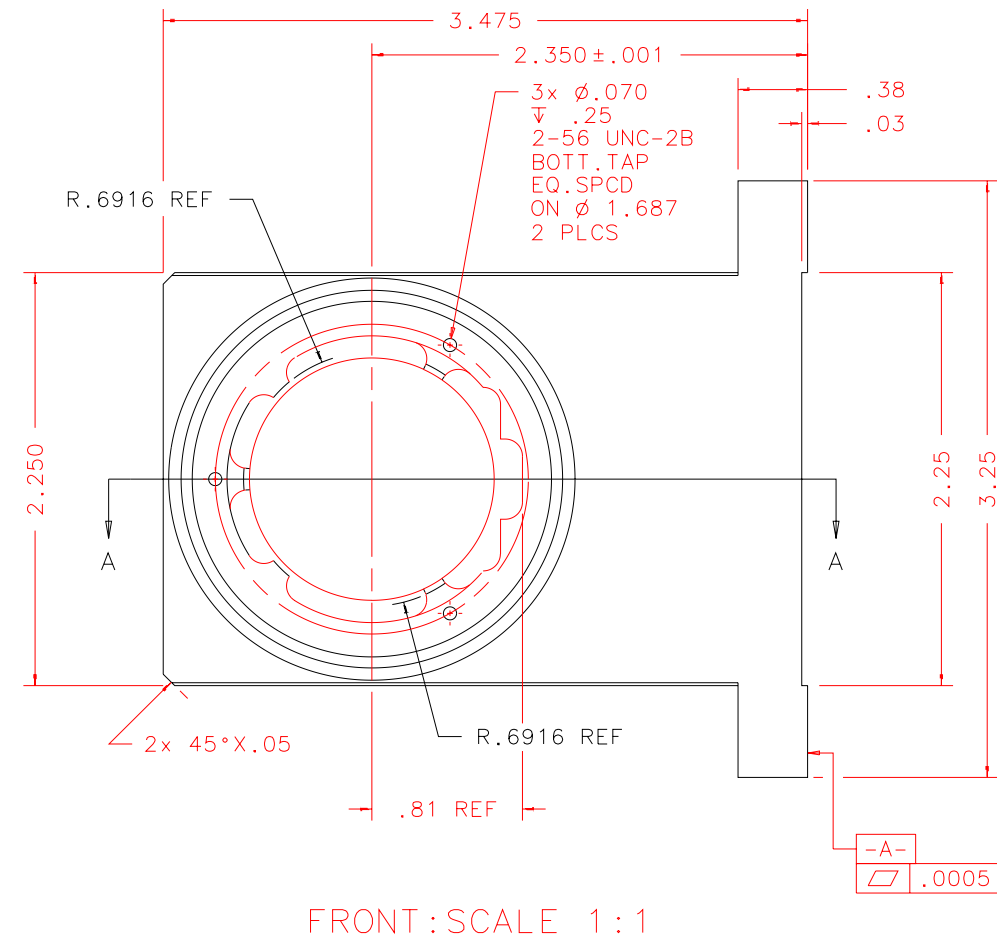
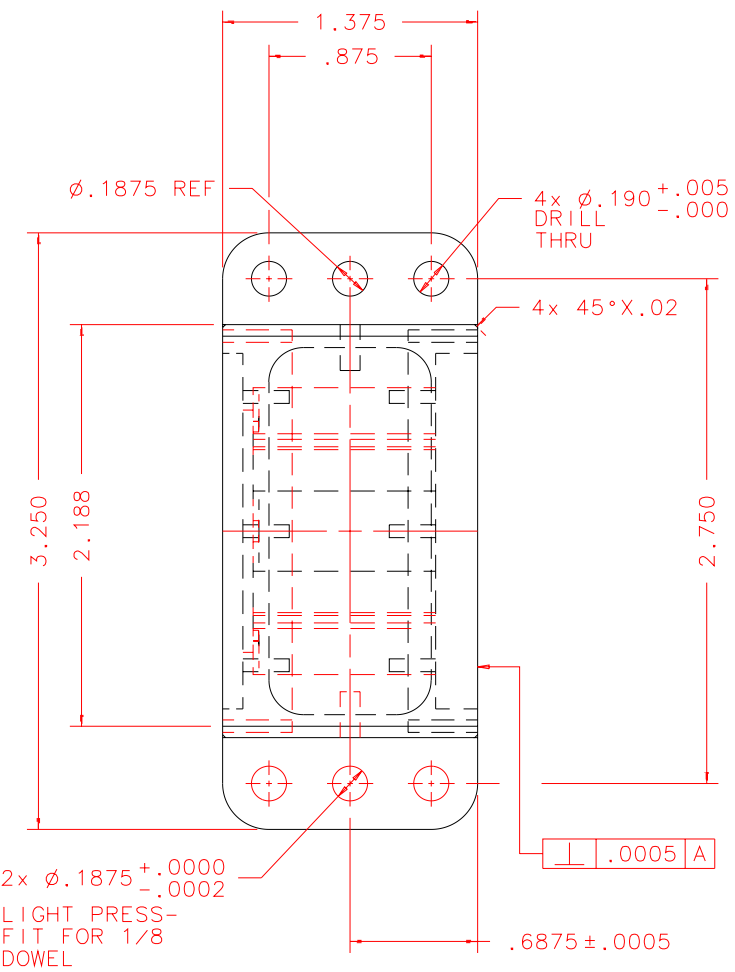
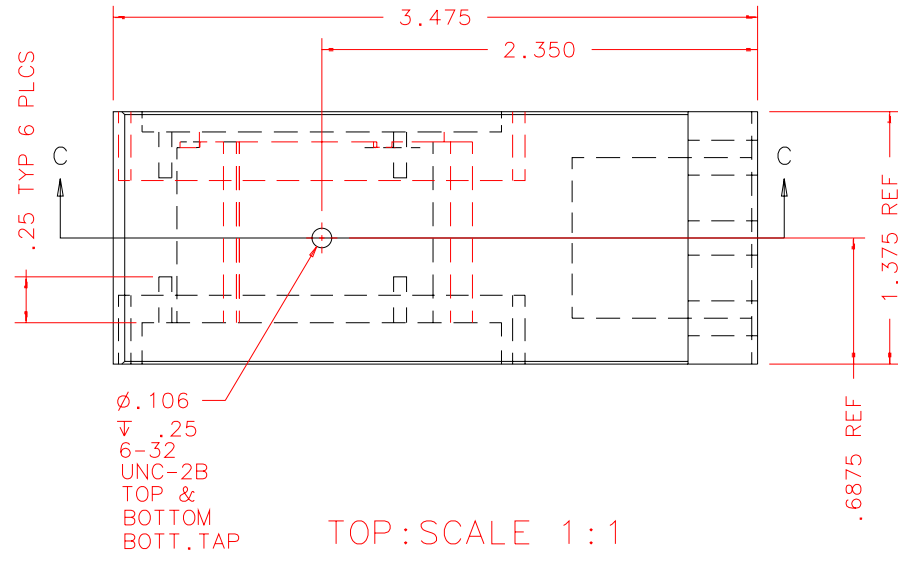


NOTES: UNLESS OTHERWISE NOTED
 1. MACHINED SURFACE ROUGHNESS 64
 O-RING GROOVES AND SURFACES 32
 2. REMOVE ALL BURRS/SHARP CORNERS

POLISH ALL OUTSIDE LOOKING SURFACES
 TO A 10 MICRON FINISH. DO NOT POLISH
 ANY CAVITIES IN THESE SURFACES AND
 SURFACES MARKED ON THIS SHEET

BILL OF MATERIAL				
NO.	REQ'D	REF DRW	DESCRIPTION	MATERIAL
N/A	1	S02-025B	VIEWER TRIPLET LENS MOUNT	ALU 6061-T6



REVDATE: 03/02/99	REVISION: ADD MISSING DIM R.6916 SECTION C-C
REVDATE: N/A	REVISION: N/A
DATE: 11/01/98	INSTITUTE FOR ASTRONOMY
DESIGN: STAHLBERGER	2680 WOODLAWN DR. HONOLULU, HI 96822
DRAWN: STAHLBERGER	INSTRUMENT: SPEX - CROSS DISPERSED SPECTROGRAPH
APPR'D: J. RAYNER	PART NAME: VIEWER TRIPLET LENS MOUNT
TOLERANCES	
X.X	+/- .015
X.XX	+/- .005
X.XXX	+/- .002
ANGLE	+/- 30 min
FRACTION	+/- 1/32
TELESCOPE: IRTF	

S02-001A	DRW NO: S02-025B	SCALE: NOTED
NEXT ASSY	SIZE: B	JOS NO: 725
		SHEET: 1 OF 4

PLOT: 10/19/99