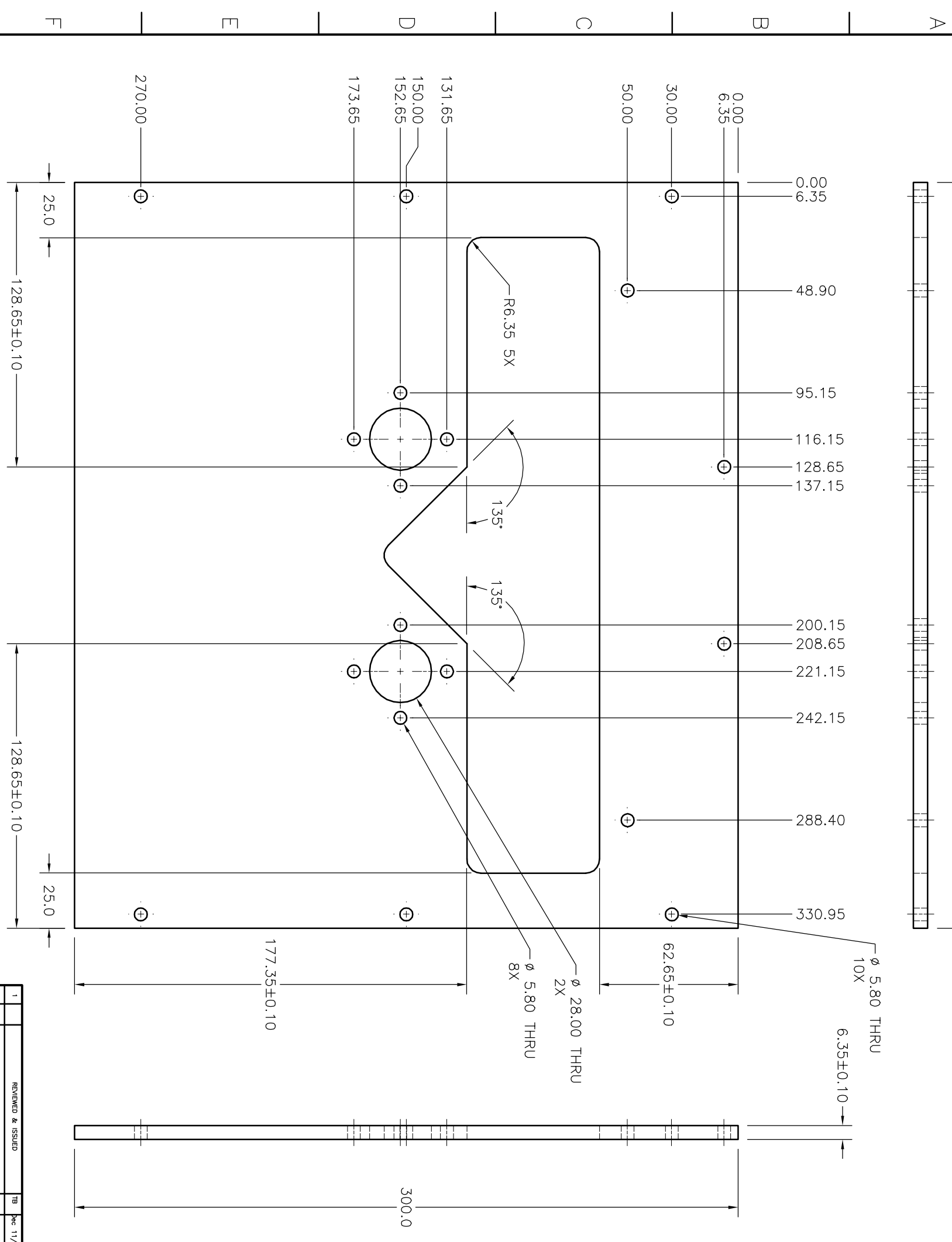
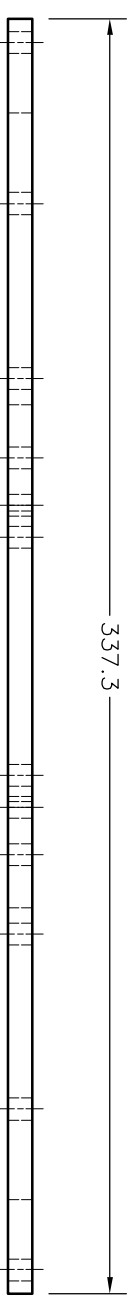


ITEM	QTY.	DESCRIPTION	MATERIAL	NOTE
1	1	337.3 x 300.0 x 6.35 Plate	ALUM 6061	



NOTES:  
 1 REMOVE ALL BURRS AND SHARP EDGES

UNLESS OTHERWISE STATED ALL DIMENSIONS IN MILLIMETERS		NASA INFRARED TELESCOPE FACILITY Institute for Astronomy University of Hawaii 2680 Woodlawn Drive Honolulu, HI, 96822	
TOLERANCES	± 0.500 X.X ± 0.100 X.XX ± 0.050 X.XXX ± 0.010 ANGLE ± 0.30	PRODUCT	TCS3 LAB MODEL
MACHINING FINISH	N7 - 1.8µM - 63µIN	TITLE	Lab Set Assembly Middle Case Shelf
EDGE BREAK	0.3mm x 45°	DESIGNED TB	DATE Dec 03
		DRAWN TB	DATE Dec 03
		CHECKED TB	DATE Dec 11/03
		SCALE	1:2
		DWG. No.	2006
		REV	1.0

REV	LOC	DESCRIPTION	BY	DATE
1		REWORKED & ISSUED	TB	Dec 11/03