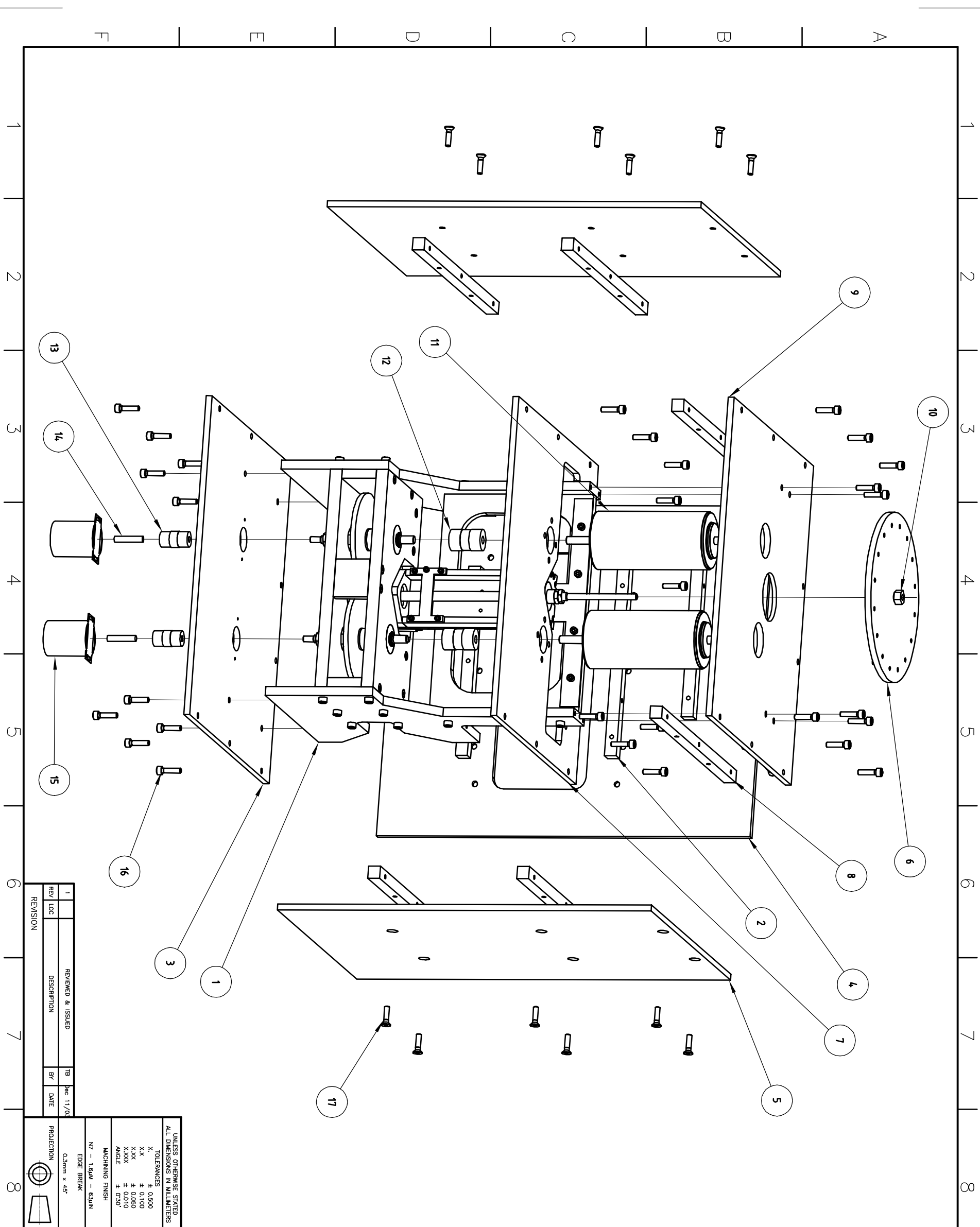


ITEM	QTY.	DESCRIPTION	MATERIAL	NOTE
1	1	Dwg-2100 : Inner Body Assembly	XX	
2	3	Dwg-2001 : Back Case Brace	XX	
3	1	Dwg-2002 : Bottom Case Shelf	XX	
4	1	Dwg-2003 : Case Back Plate	XX	
5	2	Dwg-2004 : Case Side Plate	XX	
6	1	Dwg-2005 : Mass Table	XX	
7	1	Dwg-2006 : Middle Case Shelf	XX	
8	6	Dwg-2007 : Side Case Brace	XX	
9	1	Dwg-2008 : Top Case Shelf	XX	
10	1	SHAFTLOC SLEEVE: Stock Drive #A7Z39M0610	XX	
11	2	MAXON MOTOR: #F2260.889-51.216-200	XX	
12	2	8mm BELLOWS COUPLING: Stock Drive #S50FP9MFB0C821	XX	
13	2	6mm BELLOWS COUPLING Stock Drive #S50FP9MFB0C0617	XX	
14	2	30mm PREC. GROUND SHAFT Nordex #AAS-B9-602	St. Steel	
15	2	HEIDENHAIN ENCODER ERN1080, 3600 line count	XX	
16	34	HEX SHCS : M5 x 20	St. Steel	
17	25	HEX SOCKET COUNTER-SUNK HEAD SCREW : M5 x 20	St. Steel	

NOTES:
1 REMOVE ALL BURRS AND SHARP EDGES



UNLESS OTHERWISE STATED ALL DIMENSIONS IN MILLIMETERS		PROJECT		TITLE	
TOLERANCES	± 0.500	NASA INFRARED TELESCOPE FACILITY		TCS3 LAB MODEL	
X	± 0.100	Institute for Astronomy		Lab Set Assembly	
X.X	± 0.050	University of Hawaii		Overall	
X.XX	± 0.010	2680 Woodlawn Drive			
X.XXX	± 0.005	Honolulu, HI, 96822			
ANGLE	± 0.30	MACHINING FINISH			
		N7 = 1.8µM - 63µIN			
		EDGE BREAK			
		0.3mm x 45°			
PROJECTION		DESIGNED TB	DRAWN TB	CHECKED TB	SCALE
		DATE	DATE	DATE	1:4
		Dec 03	Dec 03	Dec 11/03	DWG. No. 2000
REVISION		REV	LOC	DESCRIPTION	BY
1		1		REQUIRED & ISSUED	TB
					DATE
					Dec 11/03