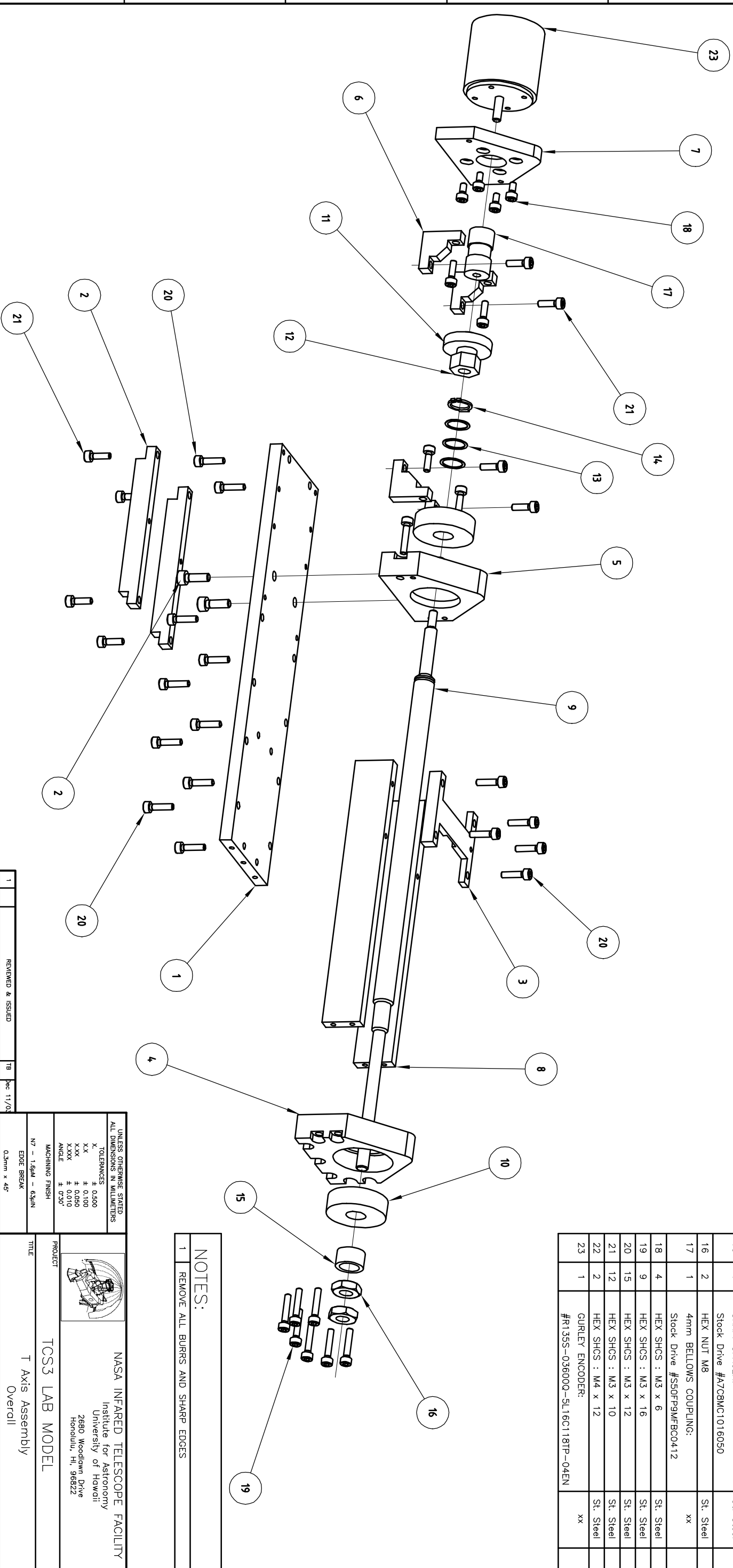


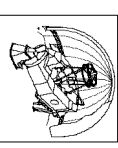
ASSEMBLED VIEW

ITEM	QTY.	DESCRIPTION	MATERIAL	NOTE
1	1	Dwg-2121 : Base Plate	xx	
2	2	Dwg-2122 : Brace	xx	
3	1	Dwg-2123 : Brake	xx	
4	1	Dwg-2124 : Bearing Block #1	xx	
5	1	Dwg-2125 : Bearing Block #2	xx	
6	4	Dwg-2126 : Corner	xx	
7	1	Dwg-2127 : Encoder Block	xx	
8	2	Dwg-2128 : Wall Plate	xx	
9	1	Dwg-2129 : T Axis Shaft	xx	

ITEM	QTY.	DESCRIPTION	MATERIAL	NOTE
10	2	BEARINGS: KOYO Part #XXXXXXXXXX	St. Steel	
11	1	SPUR GEAR: Stock Drive #S12N05M048S0510	St. Steel	
12	1	SHAFTLOC SLEEVE: Stock Drive #A7Z39M0610	xx	
13	3	SHAFT SPACER: Norderx #BDS-M6-4	St. Steel	
14	1	RETAINING CLIP: Norderx #DRS-M2-8	St. Steel	
15	1	SHAFT SPACER: Stock Drive #A7C8M01016050	St. Steel	
16	2	HEX NUT M8	St. Steel	
17	1	4mm BELLOWS COUPLING: Stock Drive #S50FP9MFB00412	xx	
18	4	HEX SHCS : M3 x 6	St. Steel	
19	9	HEX SHCS : M3 x 16	St. Steel	
20	15	HEX SHCS : M3 x 12	St. Steel	
21	12	HEX SHCS : M3 x 10	St. Steel	
22	2	HEX SHCS : M4 x 12	St. Steel	
23	1	GURLEY ENCODER: #R135S-036000-SL16C118TP-04EN	xx	



NOTES:
1 REMOVE ALL BURRS AND SHARP EDGES

UNLESS OTHERWISE STATED ALL DIMENSIONS IN MILLIMETERS		TOLERANCES	
X	± 0.500	XX	± 0.100
XXX	± 0.050	XXXX	± 0.010
ANGLE	± 0.30°		
MACHINING FINISH		N7 - 1.6UM - 63UM	
EDGE BREAK		0.3mm x 45°	
PROJECT		 NASA INFRARED TELESCOPE FACILITY Institute for Astronomy University of Hawaii 2680 Woodlawn Drive Honolulu, HI, 96822	
TITLE		TCS3 LAB MODEL	
Overall		Overall	
DESIGNED	TB	DRAWN	TB
DATE	Dec 03	DATE	Dec 03
CHECKED	TB	SCALE	1:2
DATE	Dec 03	DWG. No.	2120
REV	1	REV	1.0
LOC	REVISION	DESCRIPTION	DATE
1		REVIEWED & ISSUED	TB Dec 11/03