

ITEM	QTY.	DESCRIPTION	MATERIAL	NOTE
X	X	XXX	XXX	

OVERALL LABSET ASSEMBLY
dwg - 2000

INNERBODY ASSEMBLY
dwg - 2100

CRANKCASE ASSEMBLY
dwg - 2110

TAXIS ASSEMBLY
dwg - 2120

PARTS
dwg - 2101 : Frame #1
dwg - 2102 : Frame #2
dwg - 2103 : T Flexure

PARTS
dwg - 2001 : Back Case Brace
dwg - 2002 : Bottom Case Shelf
dwg - 2003 : Case Back Plate
dwg - 2004 : Case Side Plate
dwg - 2005 : Mass Table
dwg - 2006 : Middle Case Shelf
dwg - 2007 : Side Case Brace
dwg - 2008 : Top Case Shelf

PARTS
dwg - 2111 : Face Plate
dwg - 2112 : K Spring Flexure
dwg - 2113 : Spacer Plate #1
dwg - 2114 : Spacer Plate #2
dwg - 2115 : Spacer Plate #3
dwg - 2116 : D Axis Shaft

PARTS
dwg - 2121 : Base Plate
dwg - 2122 : Brace
dwg - 2123 : Brake
dwg - 2124 : Bearing Block #1
dwg - 2125 : Bearing Block #2
dwg - 2126 : Corner
dwg - 2127 : Encoder Block
dwg - 2128 : Wall Plate
dwg - 2129 : T Axis Shaft

NOTES:
1 REMOVE ALL BURRS AND SHARP EDGES

F

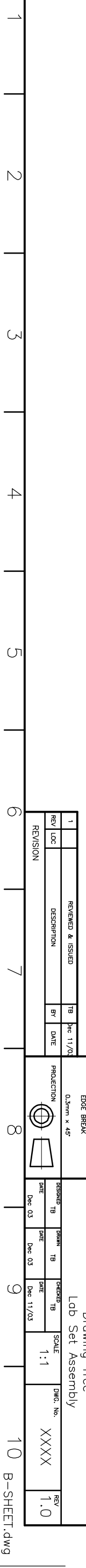
E

D

C

B

A



REV	LOC	DESCRIPTION	BY	DATE
1		REVIEWED & ISSUED	TB	Dec 11/03
REVISION				

UNLESS OTHERWISE STATED
ALL DIMENSIONS IN MILLIMETERS

TOLERANCES
X ± 0.500
X.X ± 0.100
X.XX ± 0.050
X.XXX ± 0.010
ANGLE ± 0.50

MACHINING FINISH
N7 - 1.6µm - 63µm
EDGE BREAK 0.3mm x 45°

PROJECTION
FIRST ANGLE

PROJECT
NASA INFRARED TELESCOPE FACILITY
Institute for Astronomy
University of Hawaii
2680 Woodlawn Drive
Honolulu, HI, 96822

TCCS3 LAB MODEL

TITLE
Drawing Tree
Lab Set Assembly

DESIGNED TB DATE Dec 03
DRAWN TB DATE Dec 03
CHECKED TB DATE Dec 11/03

SCALE 1:1
DWG. No. XXXX
REV 1.0